

ZÜRICH



by **Amelia Roper**

directed by
Brad DeFabo Akin

SEASON EIGHTEEN • STEEP THEATRE COMPANY
18



STEEP THEATRE COMPANY

ENSEMBLE MEMBERS

James Allen	Peter Dully	Caroline Neff	Julia Siple
Jonathan Berry	Jonathan Edwards	Jim Poole	Sasha Smith
Lucy Carapetyan	Nate Faust	Egan Reich	Kendra Thulin
George Cederquist	Alex Gillmor	Joel Reitsma	Robin Witt
Matthew Chapman	Nick Horst	Melissa Riemer	Brendan Melanson
Brad DeFabo Akin	Lauren Lassus	Brandon Rivera	<i>in memoriam</i>
Maria DeFabo Akin	Ashleigh LaThrop	Michael Salinas	
Thomas Dixon	Cynthia Marker	Amber Sallis	
Patricia Donegan	Peter Moore	Joanie Schultz	

ARTISTIC ASSOCIATES

Catherine Allen	Jon Ravenscroft	Simon Stephens	Brandon Wardell
Kristin Leahey	Alison Siple	<i>Assoc. Playwright</i>	Chelsea M. Warren
Emily McConnell		Dan Stratton	Ellen Willett

BOARD OF DIRECTORS

Jessica Schrey <i>President</i>	Shawn Sackett <i>Vice President</i>	Anne Marie Mitchell <i>Secretary</i>	Doug Passmore <i>Treasurer</i>
Dave Bartusek	Sonya Dekhtyar	Stu Kiesow	Elizabeth Moore
David Bock	Kelly Fitzgerald	Ted Lowitz	Anne Puotinen
Kelly Carpenter	Ian Galleher	Cooper Melgreen	

STAFF

Peter Moore <i>Artistic Director</i>	Lisa Troi Thomas <i>House Manager</i>	Caroline Neff <i>Casting Director</i>	Stu Kiesow <i>Graphic Designer</i>
Kate Piatt-Eckert <i>Executive Director</i>	Ryan Kling <i>Bar Manager</i>	Lucy Carapetyan <i>Casting Associate</i>	Lee Miller <i>Photographer</i>
Julia Siple <i>Managing Director</i>	Sophiyaa Nayar <i>Program Coordinator</i>	Egan Reich <i>Literary Manager</i>	Gregg Gilman <i>Photographer</i>

FRIENDS OF STEEP

Heidi Brock	Sara Foster	Molly Johnson	Jon Putnam
Reid & Jennifer	Diane Galleher	Katie Kett	Christine Rousseau
Quinn Broda	Barry Grant	Jennifer Collins	Craig Steadman
John Dunnigan	Neil Jain	Moore	John C. White

Steep Theatre Company is supported in part by a CityArts Grant from the City of Chicago Department of Cultural Affairs & Special Events, the Illinois Arts Council Agency, the Arts Work Fund, the Alphawood Foundation, the MacArthur Fund for Arts & Culture at the Richard H. Driehaus Foundation, the Gaylor & Dorothy Donnelley Foundation, the Sol R. Kaufman Family Foundation, the A.L. and Jennie L. Luria Foundation, the Rothman Family Foundation, and the Jordan & Jean Nerenberg Family Fund. Steep is a member of the League of Chicago Theatres and Theatre Communications Group.

STEEP THEATRE COMPANY

1115 West Berwyn, Chicago, IL 60640
www.steeptheatre.com
info@steeptheatre.com
(773) 649-3186



Steep Theatre Company

proudly presents the Midwest Premiere of

Zürich

by Amelia Roper

CAST

She	Sasha Smith*
He	Jeff Kurysz
Guy	Debo Balogun
Maid	Elizabeth Wigley
Girl	Maya Lou Hlava
Boy	Cole Keriazakos
Emily	Cindy Marker*
Fryda	Julia Dale & Paula Hlava
One	Valerie Gorman
Two	Brandon Rivera*

UNDERSTUDIES

She	Amber Sallis*
He	Elijah Cox
Guy / Two	Ian Voltaire Deanes
Maid / Emily	Anna Donnell
Girl	Lainie Wieshuber
Boy	Sean Zielinski
One	Lorraine Freund

PRODUCTION STAFF

Director	Brad DeFabo Akin*
Stage Manager	Lauren Lassus*
Scenic Designer	Jeffrey D. Kmiec†
Lighting Designer	Becca Jeffords
Costume Designer	Izumi Inaba†
Sound Designer & Composer	Thomas Dixon*
Props Designer	Kevin Rolfs
Dialect Coach	Adam Goldstein
Fight Director & Assistant Intimacy Director	Gaby Labotka
Intimacy Director	Sarah Scanlon
Assistant Director	AJ Schwartz
Production Manager	Catherine Allen**
Technical Director	David Moreland
Assistant Stage Manager	Serena Dully

*Steep Theatre Ensemble Member ** Steep Theatre Company Artistic Associate

†Member of United Scenic Artists Local 829

Steep salutes the sponsors of this production of *Zürich*: **Dr. Jan Willer & Mark Osing**

The video and audio recording of this show is strictly prohibited. You may take photos of the stage before or after the show, but not when actors are present. If you post these photos online or elsewhere, please credit the production's designers listed above.

Zürich was commissioned and originally produced by Colt Coeur, as part of Next Door at New York Theatre Workshop, New York, NY.

CAST



Sasha Smith (She) Sasha is a Chicago-based actor and violence and intimacy choreographer. Recent acting credits include *Hint* and *Hookman* (Steep Theatre)

Johanna Faustus (The Hypocrites), *Stay Lit* (The Roustabouts), and *The Aristophanesathon* (The Hypocrites). She has been seen on television in *Chicago Fire*, *Chicago PD*, and *Green Screen Adventures*. Recent choreography credits include *You Got Older* (Steppenwolf), *Smart People* (Writers Theatre), *Fear and Misery of the Third Reich* (Haven Theatre), *The Toilet* (Haven Theatre), *A Funny Thing Happened On The Way To The Gynecologic Oncology Unit At Sloan-Kettering Memorial Cancer Center Of New York City* (Route 66), *Ideation* (Jackalope), and *Octagon* (Jackalope). She is a graduate of Columbia College Chicago.



Jeff Kurysz (He) Jeff is so thrilled to be making his Steep debut. Other Chicago credits include: *Support Group for Men* (Goodman Theatre); *33 to Nothing* (A

Red Orchid Theatre); *The Legend of Georgia McBride* (Northlight Theatre) *Shakespeare in Love* (Chicago Shakespeare Theatre) *Romeo and Juliet*, *As You Like It* (Backroom Shakespeare Project); *Julius Caesar* (Brown Paper Box Co.); *As You Like It*, *Much Ado About Nothing* (The Arc Theatre); *Year of the Rooster*, *R+J: The Vineyard* (Red Theater); *Romeo and Juliet* (Teatro Vista); *One Came Home* (Lifeline Theatre); *All My Sons* (Eclectic Theatre Co.); *Amadeus* (Boho Theatre); Regional credits include: *Richard III*, *Twelfth Night* and *The Tempest* (Arkansas Shakespeare Theatre). Television credits include *Crisis* (NBC); *Chicago Fire* (NBC). He is a graduate of The School at Steppenwolf.



Debo Balogun (Guy) Debo is thrilled to be making his Steep Theatre debut. Chicago credits include *Fair Maid of the West*, *You Can't Take It With You* (Oak Park

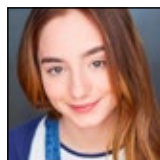
Festival Theatre), *Mary's Wedding* (First Folio Theatre), *Moon Man Walk* (Definition Theatre Company), and *Bobby Pin Girls* (Nothing Without a Company). All the love in the world to his friends, family, and mentors for their undying support. He is an Artistic Associate of Oak Park Festival Theatre and is proudly represented by Gray Talent Group.



Elizabeth Wigley (Maid)

Elizabeth is thrilled to be back at Steep! She was last seen here understudying Lexi in *Hookman*. Other recent Chicago credits include

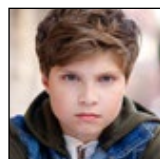
Bringing Iraq Home (Waltzing Mechanics), *Route* (20% Theatre Company), *The Faculty Lounge* (Oil Lamp), *Boxes* (NoMads Art Collective), and *A Christmas Carol* (Winnetka Theatre). She is a proud graduate of Northwestern University and the School at Steppenwolf class of 2016.



Maya Lou Hlava (Girl)

Maya Lou is honored to be making her Steep Theatre debut. Other Chicago credits include *Oklahoma* (Marriott Theatre); *Violet* (Griffin Theater); *Trevor*

(Writers Theatre); *The Nether* (A Red Orchid Theatre); *White Christmas* and *Bye Bye Birdie* (Drury Lane Theater); *Jake's Women* (Spartan Theatre Company); *The Secret Garden* (Court Theatre); *The Talking Cure* (Idle Muse Theatre Company); *Jane Eyre* (Lifeline Theatre); and *The Wheel* (Steppenwolf Theatre). Maya is also a principal voice over artist for Disney's *World of English* and was seen in the film *The Life of Penny Cyclone* within the US Premiere of *Ride the Cyclone* (Chicago Shakespeare Theatre). Many thanks to Stewart Talent, and to the folks at Steep Theatre for giving her this amazing opportunity!



Cole Keriazakos (Boy)

Cole is thrilled to be making his Steep Theater debut in *Zürich*. Currently, he has a recurring role in the new television series *Southside*

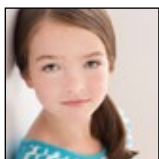
on Comedy Central. Just a few of his many TV credits include the title role in Disney's *Nelson*

CAST, continued

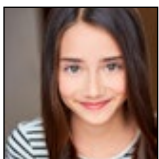
Bixby Takes On The Whole Wide World; Amazon's *Phillip K Dick's Electric Dreams* (Dashiel); and *Chicago Fire* as Archie Keating. Cole has also had principal roles in several national commercials. Cole was a member of the Performer's School in Highwood. Thanks to his family and friends for their unending support. Cole is represented by Paonessa Talent. Instagram: @colekeriazakos



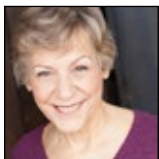
Cindy Marker (Emily) Cindy most recently appeared in *Linda* and *Birdland* and is happy to be part of this production. Many congratulations to the immensely talented cast and crew!



Julia Dale (Fryda) Julia is a rising fifth grader. Her prior performances include *The School of Rock* (Katie), *A Christmas Carol* (Fan), *Aladdin* (Genie), *Peter Pan* (Tinkerbell), *The Little Mermaid* (Flounder), and countless more. When not on stage, you might find her reading, singing, or playing guitar, piano or bass guitar. Julia is very excited to make her Steep Theatre debut!

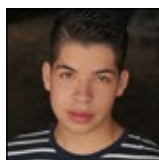


Paula Hlava (Fryda) Paula is thrilled to be making her Steep Theatre debut. Previous credits include *Ragtime* (Marriott Theatre) and *Billy Elliott* (Porchlight Theater). She loves to volunteer in her spare time helping animals at shelters. Paula would like to thank her family and Stewart Talent! Much thanks to Steep Theatre for giving her this wonderful opportunity!

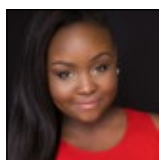


Valerie Gorman (One) Valerie is grateful and thrilled to be working once again with Steep. She appeared here in *Moment* and *Seven Days*, and was last seen at Oil Lamp's *On Golden Pond*, *Joint Attention* (Three Cat Productions), *End of the Tour* and *Pull of the Moon* (16th Street Theater). She has also worked with other

theaters including Raven, Griffith, Eclipse, North Light, Mercury, and Provision. She was a former ensemble member with Reflections Theater and is represented by Big Mouth Talent.



Brandon Rivera (Two) Brandon is happy to be back at Steep where he was last seen in *Brilliant Adventures*. Other Chicago credits include *Round Heads* and *Pointed Heads* (Red Tape Theatre), *Akeelah and the Bee* (Adventure Stage Chicago), *Into the Beautiful North* (16th Street Theatre), *Dog Sees God* (Eclectic Theatre), and *The Memory Tour* (Pivot Arts). He received his training from the University of Illinois at Urbana, Champaign. Brandon is an ensemble member at Steep.



Amber Sallis (She Understudy) Amber's theatrical credits include *Earthquakes in London*, *Hintz*, *Birdland* (Steep Theatre), *Adventures of Robin Hood* (Adventure Stage Chicago), *The Last Days of Judas Iscariot* (Eclectic Full Contact Theatre), *Passin Where The River Bends* (Magnified Gift Theatre Company), *Covenant* (Creating Justice Conference), and *A Snowy Day and Other Stories* (Emerald City Theatre). She has participated in staged readings at the Goodman and Chicago Dramatists. Amber was named one of the *Chicago Tribune's* "Hot New Faces" class of 2017. She is a 2016 Graduate of Northern Illinois University with a BFA in Acting and studied at MXAT theatre school in Moscow, Russia.



Elijah Cox (He Understudy) Elijah is originally from Ypsilanti, MI, and is a recent graduate of Loyola University Chicago, where credits include *The Baltimore Waltz* and *Elephant's Graveyard*. Chicago credits include *Lies*, *Damned Lies* and *Statistics* and *Detergent Symphony* (Theatre Momentum). His play *Admittance* was produced as part of

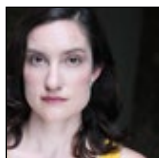
CAST, continued

the McKay Arts 10 Minute Performance Festival. Thanks to Brad for the opportunity, and to Mom, Dad, and Annie for their love.



Ian Voltaire Deanes (Guy / Two Understudy) Ian is incredibly excited to work with Steep Theatre and to be a part *Zürich*. He is a native of Chicago's south side and

a 2017 graduate of The School at Steppenwolf. Recent credits include Jackalope Theatre's *Living Newspapers Festival*, Nothing Without a Company's production of *Not One Batu*, and The Gift Theatre's *TEN*. When not acting, Ian enjoys practicing Muay Thai and improvising with friends around the city.



Anna Donnell (Maid / Emily Understudy) Anna is a founding member and accessibility designer at Chimera Ensemble. She has performed with Chimera in

The Totalitarians, *Sister Cities*, *Saguaro*, and *Spread*. Other recent credits include *Living Newspaper Festival* (Jackalope Theatre), *Women Laughing Alone with Salads* (Theatre Wit) and *Rhinoceros* (Eclectic Full Contact Theatre). Anna is a member of Global Hive Laboratories creating devised theatre internationally. She is a graduate of The School at Steppenwolf, The Academy at Black Box Acting and The University of Mississippi.



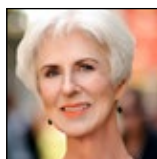
Lainie Wieshuber (Girl Understudy) Lainie is thrilled to be part of the cast of *Zürich* at Steep Theatre. Lainie's love for theater and music has provided her the

role of Cogsworth in *Beauty and the Beast*, the understudy of Jack's Mother in *Into the Woods*, and part of the ensemble for *Grease*. Lainie also participates in many acting classes and camps at Acting Studio Chicago. She is in eighth grade at a Chicago Public School where she enjoys taking Mandarin as a foreign language, is on the school volleyball team, and participates in the school musicals.



Sean Zielinski (Boy Understudy) Sean is thrilled to be making his Steep Theatre debut! Most recently, he performed as a troupe member of the

Second City Youth Ensemble. Previously, he appeared in *Joy to the Other Worlds* (Otherworld Theatre), *Zie Zauberflöte* (Lyric Opera of Chicago), and several student productions with EDGE Youth Theatre. On-camera credits include the music video, *Bitter Truth* (Iron&Wine) and feature film *Sun King* (dir. Marcus Aubin). When not acting, Sean enjoys making films. This summer, he directed, co-wrote, & produced his first official film short, *Draco*, for the 48 Hour Film Project. He is represented by Gray Talent Group. Instagram: @seanzielskiactor



Lorraine Freund (One Understudy) Lorraine is excited to be working with Steep Theatre again. She has had the good fortune to work at various Chicago

theatres including The Hypocrites, Griffin Theatre, The Artistic Home, Rivendell Theatre Ensemble, Next Theatre, Collaboration, Victory Gardens Theatre and Piccolo Theatre among others. She thanks Brad for this wonderful opportunity and her husband Russell for his continued support. Represented by Shirley Hamilton Talent.

PRODUCTION STAFF

Amelia Roper (Playwright) Amelia is an award-winning Australian/American playwright and screenwriter, living in LA, where she works on the Netflix/Jenji Kohan show *GLOW* and develops TV and film for American and Aussie audiences. Her plays have been seen at New York Theatre Workshop produced by Colt Coeur, Humana Festival of New American Plays at Actor's Theatre of Louisville, the Old Vic in London, Taffety Punk in DC, Square Product in Boulder, Prelude Festival in NYC, San Francisco, Sydney, Melbourne, and Moscow in Russian translation. She's writing for Oregon Shakespeare Festival, Marin Theatre Company, The Rose and an adaptation of Jane Bowles' queer, modernist novel, *Two Serious Ladies* for Yale Rep. Her latest play *Zürich* opened at New York Theatre Workshop, produced by Colt Coeur, to rave reviews and Critics Pick in *The New York Times*, *TimeOut*, and *The New Yorker*. Showcase and developments include the Soho Rep Writer/Director Lab, Black Swan Lab at OSF, Berkeley Rep's Ground Floor, Kennedy Center in DC, Playwrights Realm in NYC, New Group NYC and The MacDowell Colony. Published plays include *Big Sky Town*, *Camberwell House* and *She Rode Horses Like the Stock Exchange* with an introduction by Sarah Ruhl. New plays include *Everything is Nice*, a futuristic comedy about climate change, and *A Duck on a Bike*, an autobiographical comedy about grief. As an activist, she works with Gloria Steinem, Hollywood's Time'sUp movement and 5050by2020 with Jill Soloway. She is represented by CAA and Management 360 and has an MFA in playwriting from the Yale School of Drama.

Brad DeFabo Akin (Director) *Zürich* marks the ninth show Brad DeFabo Akin has directed at Steep, where he has been an ensemble member since 2005. Past Steep directing credits: *Book of Days*, *The Last Days of Judas Iscariot*, *Insignificance*, *Greensboro: A Requiem*, *Under the Blue Sky*, *strangers, babies*, *The Few*, and the world premiere of Calamity West's *Hint*. Outside of Steep, his Chicago directing credits include: *The Orchestra* (Akvavit Theatre), *Crimes of the Heart* (Step Up Productions), *Edgar & Annabel*

(Poor Theatre), *The Revenants* (WildClaw Theatre), *OOHRAH!* (LiveWire Theatre), and *Where We're Born* (Steppenwolf Garage). Brad served as Steep's Literary Manager for 11 years, helping to cultivate the company's relationship with new playwrights, developing relationships with MFA playwriting programs, and supporting the development of three world premieres at Steep - including Calamity West's *Hint*. He currently serves as the Executive Director of Step Up Chicago Playwrights, where he supports the work of local playwrights in telling the story of our city.

Lauren Lassus (Stage Manager) Lauren is a proud Steep Ensemble Member. She is thrilled to be working with Brad again. Recent Steep credits include *Linda*, *Hint*, *The Invisible Hand*, *Hookman*, and *Bobbie Clearly*. She works with theatres across the city, most recently on *Little Match Girl Passion* with Facility Theatre and *Mercury Hamlet*.

Jeffrey D. Kmiec (Scenic Designer) Jeffrey is an award-winning Chicago-based scenic designer. His designs have been seen at the Paramount Theatre, Drury Lane Theatre, Marriott Theatre, Chicago Shakespeare Theatre, Timeline Theatre, American Players Theatre, Northlight Theatre, Porchlight, Raven Theatre, The Artistic Home, Illinois Shakespeare Festival, Arkansas Shakespeare Theatre, Heritage Theatre Festival and The Children's Theatre of Charlotte. He has received three consecutive Equity Jeff Awards for his designs on *The Little Mermaid* at the Paramount Theatre (2017), *Deathtrap* at Drury Lane Theatre (2016), and *Les Misérables* at The Paramount Theatre (Co-Design with Kevin Depint in 2015). Jeffrey received his MFA from the University of Virginia and is a member of USA 829.

Becca Jeffords (Lighting Designer) Becca is thrilled to be returning to Steep. Recent Chicago credits include: *Southern Gothic* (The Windy City Playhouse), *The Walls of Harrow House* (Rough House Theatre); *The Few* (Steep Theatre); *Nice Girl* (Raven Theatre); *Neverwhere*, *Arnie the Donut*, *Sparky!* and *Soon I will be Invincible* (Lifeline); *Temperamentals* (About Face Theatre), and *A Snowy Day with*

PRODUCTION STAFF, continued

Beatrix Potter (Chicago Children's Theatre). She received her MFA in Lighting Design from Northwestern University and graduated from Columbus State University Summa Cum Laude in Production Design. For more information, visit www.beccajeffords.com.

Izumi Inaba (Costume Designer) Izumi is so delighted to be back to Steep Theatre. Previous Steep credits: *Greensboro: A Requiem*, *The Cheats*, *Linda*, and *Ellis Island* in collaboration with Chicago Sinfonietta. Recent Chicago credits: *Tilikum* (Sideshow), *Damascus* (Strawdog), *Last Stop On Market Street* (Chicago Children), *Smart People* (Writers). Izumi is a resident designer at Albany Park Theater Project, and a member of USA Local 829. MFA in Stage Design, Northwestern University.

Thomas Dixon (Sound Design & Original Music) Thomas is an Ensemble Member at Steep and also serves as one of the Artistic

Curators of The Boxcar. Aside from the many plays he's designed here, his work has been heard at Steppenwolf Theatre Company, Victory Gardens Theater, Cleveland Play House, Kansas City Repertory Theatre, Jackalope Theatre Company, First Floor Theater, and more. Upcoming designs include *A Doll's House, Part 2* (Steppenwolf Theatre Company) and *A Number* (Writers Theatre). Thomas is a member of the Theatrical Sound Designers and Composers Association, and he teaches at Columbia College Chicago and DePaul University. www.thomasdixonsound.com

Kevin Rolfs (Props Designer) Kevin is a Chicago based scenic and prop designer whose design work was most recently seen in *Buddy: The Buddy Holly Story* at American Blues Theater. Upcoming scenic design work can be seen with Invictus Theater's *Loves Labour Lost*. Much thanks and love to my family at Columbia College Chicago. www.krolfsdesign.com



FOUNDRY ART
FINE BRONZE TILES
FOR WALL AND FLOOR

From Lowitz & Company

Exclusively at

claremonttile.com

 CLAREMONT TILE

PRODUCTION STAFF, continued

Adam Goldstein (Dialect Coach) With Steep: *Linda, Wastwater, If There is I Haven't Found it Yet, Strangers, Babies, Motortown*; Recent: *The Book of Will, Miss Bennett* (Northlight); *Book of Joseph* (Chicago Shakes); *Man in the Ring, Blues for an Alabama Sky, Long Day's Journey...(Court)*; *Titanic, Men Should Weep* (Griffin); *The Temperamentals* (About Face); *The Room* (A Red Orchid Theatre); *Mister Punch, Season On The Line* (The House); *The Distance* (Haven); *Ironbound, OkayBye* (Steppenwolf); *After Miss Julie, Conversations on a Homecoming* (Strawdog); *Dead Man Walking, Melancholy Play, The Language Archive* (Piven); and *Compulsion* (Next). Adam is an Assistant Professor of Directing and Performance at Northeastern Illinois University. MFA-Directing, Northwestern, BFA -Acting, NYU. www.adamgoldsteintheatre.com

Gaby Labotka (Fight Director & Assistant Intimacy Director) Gaby is an actor, director, storyteller, choreographer, and more. Recent

Choreography credits include *Borealis* (The House Theatre); *Don't Smoke in Bed* (Chimera Theatre Ensemble); *Hamlet* (The Gift); *Another Jungle* (CloudGate Theatre); *Through the Elevated Line* (Silk Road Rising), *A Story Told in Seven Fights* (The Neo-Futurists); *Dontrell, Who Kissed the Sea* (First Floor Theater); *The Good Fight* (Babes with Blades); *A Swell in the Ground* (The Gift); *'Twas the Night Before Christmas* (Emerald City Theatre); *Night in Alachua County* (WildClaw Theatre); *Survivor Story: A Workshop* (Transcendent Ensemble Theatre); and *Romeo and Juliet* (Teatro Vista, 2017). You can catch more of her work this fall in *Neverland* presented by Prop Thtr. Gaby is a member and has had training with Intimacy Directors International, is an Advanced Actor Combatant with the Society of American Fight Directors, and is often a Teaching Assistant for stage combat classes at MACE and The Actors' Gymnasium. Check out more: <https://www.facebook.com/GabyLabotka.Theatre/> Keep Smiling!

Prairie Home Builders
New and renovated homes in Chicago

773-502-6383
prairiehomebuilders.com



Shown Above: Renovation of a Gold Coast townhouse - Chicago, IL

PRODUCTION STAFF, continued

Sarah Scanlon (Intimacy Director)

Sara is a Chicago-based multi-disciplinary actor and a movement and intimacy choreographer. She's collaborated in various capacities with The Notre Dame Shakespeare Festival, Lifeline Theatre, The Conspirators, Factory Theater, Akvavit Theatre Company, The Building Stage, The Strange Tree Group, The Noah Ginex Puppet Company, Rough House Theater, Aloft Circus Arts, The Actors Gymnasium, and American Repertory Theatre, among others. She holds an MFA in Acting with a movement concentration from the Moscow Art Theatre School (A.R.T. and Harvard affiliated). Sarah is thrilled to be working with Steep for the first time!

AJ Schwartz (Assistant Director) AJ is proud to be working on their first Steep production, after first joining the family as an intern in 2016. As a theatremaker, they aim to use performance to explore the world through a radical, iconoclastic, and undeniably queer lens. Previous assistant directing credits include *Refrigerator* (First Floor Theatre), *Time is on Our Side* (About Face Theatre), and *Romeo and Juliet* (Loyola University Chicago Mainstage). They have also worked as associate producer with About Face Theatre and QUEER, ILL + OKAY. To learn about their work and their face, visit aj-schwartz.com

Catherine Allen (Production Manager)

Catherine is thrilled to be back working at Steep where she previously production managed *Birdland*, *Hintler*, *The Invisible Hand*, *Hookman*, *Bobbie Clearly* and *The Few*. Other production management credits include work with Rivendell Theatre Ensemble, About Face Theatre, Griffin Theatre, Route 66, Congo Square, Oak Park Festival Theatre, Pegasus Theatre Chicago, Haven Theatre, Chimera Ensemble, and many circuses with Actors

Being there is why I'm here.



Total average
savings of

\$827*

when you
combine
home and auto.

Call my
office for a
quote 24/7.

David Frederickson Agcy Inc

Dave Frederickson, Agent

6255 N Clark Street

www.davidfred.com

Bus: 773-761-4242



*Average annual per household savings based on a 2016 national survey of new policyholders who reported savings by switching to State Farm.

State Farm Mutual Automobile Insurance Company, State Farm Indemnity Company, State Farm Fire and Casualty Company, State Farm General Insurance Company, Bloomington, IL

P097186.1

PRODUCTION STAFF, continued

Gymnasium where she is the staff Production Manager. She is a graduate of the University of Illinois, Urbana-Champaign, where she received a BFA in Acting.

David Moreland (Technical Director) David is a Freelance Technical Director and a Chicago-based actor. On stage, he's recently been seen on stage with Big Noise Theater as Will Bloom in *Big Fish*, and Jaime in *The Last Five Years* and in Theo Ubique's production of *Jacques Brel's Lonesome Losers of the Night*. As a Technical Director he's had the tremendous pleasure of working with About Face Theatre (*Significant Other*, *Time is on Our Side*), Griffin Theatre (*Violet*, *Letters Home/Ghosts of War*) Stage Left Theatre (*The Luckiest People*), Haven Theatre (*The*

Displaced) and many others. He is so thankful to all the help everyone gave to this show, and hopes you all enjoy it!

Serena Dully (Assistant Stage Manager)

Serena is a freelance stage manager and theatre technician from Chicago, IL. She has recently stage managed *Red Bowl at the Jeff's* (Sound Theatre), *Liberty City* (Fleetwood Jourdain), *Sir Gawain and the Green Knight* (Pearle Poet Productions) and assistant stage managed *The Light Fantastic* (Jackalope), *Brave Like Them* (About Face), *Invisible Hand* and *The Life and Sort of Death of Eric Argyle* (Steep). She was also an ensemble member at Lakeside Theatre Company for 7 years as an ASM and SM.

ACCESSIBLE PERFORMANCES

Audio Description and Open Captioning were made possible by the Chicago Cultural Accessibility Loan Program, which is administered by Steppenwolf Theatre Company with major funding provided by the Michael and Mona Heath Fund.

Open Captioning: October 28, 3:00pm

Audio Description: November 3, 3:00pm

For more information, please contact us at access@steeptheatre.com or 773-649-3186.



Welcome to The Boxcar - the newest part of the Steep experience! Enter through the lobby for a drink to enjoy during the show or join the cast for a lively conversation after the performance. Explore music, stories, poetry, and more curated by Steep Ensemble Members Thomas Dixon and Sasha Smith every Sunday and Monday evening at 7:30.

For a full schedule of performances visit steeptheatre.com/boxcar.

DONORS

Steep Theatre is profoundly grateful to the following supporters for their generous contributions.
This list reflects operating gifts received between Sept. 13, 2017 and Sept. 12, 2018.

Production Sponsors

Dr. Jan Willer & Mark Osing

Steep Producers (\$5,000 and up)

The Alphawood Foundation

Arts Work Fund for Organizational Development

Julie & Roger Baskes

The City of Chicago Department of Cultural Affairs & Special Events

The Gaylord & Dorothy Donnelley Foundation

The MacArthur Fund for Arts and Culture at the Richard H. Driehaus Foundation

The Illinois Arts Council Agency

A.L. and Jennie L. Luria Foundation

Steep Benefactor (\$1,000 to \$4,999)

Reid & Jennifer Quinn Broda

Susan Burland & George Plumb

Ken Burlington

Ann & Richard Carr

Holly & David Collins

Kassie Davis & Bruce Beatus

Suzanne Deveney & Bob Isaac

Gregg Gilman

Elaine Glusac & Dave Bartusek

Susan & Peter Gray

Leigh & John Hourihane

The Illinois Tool Works Foundation

Averill & Bernard Leviton

Thad King

Rita & Jim Knox

Shana Lowitz & William Swaim, M.D.

Ted Lowitz

The Lunt Family

Jen & Peter Moore

The Jordan & Jean Nerenberg Family Fund

James T. O'Neill

Pepsico Foundation

Debra & Alan Rosenberg

The Rothman Family Foundation

Karen & Frank Schneider

Jessica & Christoph Schrey

Timothy Sherck

Sylvia & Joseph Stone

Barbara & Randy Thomas

The University of North Carolina at Charlotte

Kate Welborn & Ann McGill

Anna Wermuth & Alex Gillmor

Lisa & Randy White

Dr. Jan Willer & Mark Osing

Norman Woodel

Martha Anne & Stephen Yandle

Steep Patron (\$500 to \$999)

John Bistolfo

Lawrence DelPilar

Lisa Donovan & Bradford Smith

Diane & Ian Galleher

Deborah Garber & John Tielsch

Mary & Charlie Gofen

Nancy & Bob Goldin

John Hahm

Dorothy Harza

Stu Kiesow

Carolyn & Gordon Kirk

Sara & Adam Levy

Gregory Lewis & Mary Strek

Fran & Chuck Licht

Gregory Mancuso & Laurie Breitkopf

Pamela Monaco & Don Kehne

Anne & Richard Moore

Betsy Moore

Kate L. Moore

Anne Puotinen

Shawn P. Sackett

Dr. Michael Schnur & Dr. Jack Bulmash

Hope & Jeff Sheffield

Cathy & Bill Siple

Susie Stephenson

Ann & Richard Tomlinson

Laura & Robert Watson

Joseph Zambrano

Steep Contributor (\$250 to \$499)

Anonymous

Bank of America

Michael Bauschelt

David Bock

Matthew Bonaccorso

Susan Bowen & Larry Grimm

Karen A. Callaway

Jan Chattle

CDW

Christine De Groote

Vincent DiFruscio & Neil Averick

Joseph Frank

Gloria Friedman

Lee Glazer

Mr. & Mrs. John B. Hoffmann

Stephen H. Johnson

Laura & Brad Kroc

H. B. Lottero

Timothy Lyman

Lani Mesa Ellis

Andrea Mitchel

Anne Marie Dumas Mitchell

Colleen & John Mueller

Frank Newell

Susan Payne

Jerry Proffit

Elizabeth Raymond & Paul Hybel

Miriam Rosenbush

Nancy Schaefer

Karen Shankman & James Fruehling

Elisabeth Rose & Owen Shapiro

Julia Siple & Kelly Carpenter

Holly & Tony Storck

Steep Circle (up to \$249)

Anonymous

Adham Abdelfattah

Rita & Lloyd Allison

Karen Anderson

Aon Foundation

Andersonville Chamber of Commerce

Peggy Bagley & Rabbi Douglas Goldhamer

Rollie Batten

Martha Moore Battles

Walter Bay

Jennifer Beachell

Jan & Tim Bell

Steve Benner & Keith Worley

Dana Black

Joan & Hank Bliss

Noelle Borge

Michael Boyd

Meg & Matt Breslin

Larry Broutman

Dean & Caroline Browell

Arch Bryant

Brenna Buckner

Jorge L. Camacho

Carol Cann

Sharon Carr

Samantha Catalfamo

Kerry Catlin

Margarita Chavez

Nancy Chmell

Johnny Clark

Rebecca Collins

Alison Conlon

Frederica & Andrew Conroy

Victor Corder

Michelle Courvais

Ann Covode

Stephany Creamer

Linda Crowder

Ann Cunniff

James Kirby Cunningham

Andrew de Funiak

Sonya Dekhtyar

Lisa Disch

Bruce Doblin

Phil Eckert & Pat Dean

Alice & Ed Dubose

David Dunnington

DONORS, continued

Sylvia Dybiec & Mike Bayard	Chris LaMorte	Margaret Piatt & Jim White	Irene Sudac
Ruthann & Richard Edwards	Tony Lance	Kate Piatt-Eckert & Tony St. Clair	Jim Swanson
Maureen Eisenberg	Craig Langman	Angela & Charles Piatt	Linda Swift
Robin Ernst	Rosalie & David Lauerman	Andy Polacek	Janet Taylor
Edith I. Farrar	Ed Lawlor	Charles Pyne	Kendra Thulin & Jeremy Kazan
Norma Felbinger	Craig Leavitt	Vanessa Ramstack	Doris Timmen
Lauren Fisher	Celia Leventhal	Nadia & Ed Rausch	Dylan Toropov
Kelly Fitzgerald	Diane & Michael Levy	David Reed	Courtney Tries
Kevin Flynn	Ricki & Joshua Lowitz	Marilyn Reid	Svetlana Tsipursky
Karl Fogel	Lauren Marwil	Deirdre Rice	Taylor Tullis
Dave & Sylvia Fredericks	Dr. Norman E. Masters, Jr.	Melissa & Jeff Riemer	Mary Vartabedian
Haley Gadzik	Jeremy McCarter	Eugene Rinaldi	Georgina & Hai Vo
Heather Gilbert	Mary Kay McCaw	Brandon Rivera	Pooja Vukosavich
Michael Glusac	Mary & Harris McKee	Patti Rocks	Barbara Warren
Ethel & Bill Gofen	Elias Mechaber	Bernie & Judy Rosenstein	Jamieson Werling
Sally Goren	The Melior Group	Matt Rosin	Mary Wermuth, in honor of Alex Gillmor
Valerie Gorman	Nora Mender	Dr. Elaine A Sachnoff	George & Victoria Whipple
Prudy & Jacques Gourguechon	Jack Meyer	Hunter Sanders & Jason Proper	Joanne Wiedemann-Wolf
Deborah Granite	Ingrid Michaels	Elizabeth Santana	Katherine Willhoite & Rodd Zolkos
Cathie Gray	Brooke Miechel	Paul & Ann Scher	Debbie & Jeff Winton
Judy Green	David Miller	Renee Schleicher	Amy & Jonathan Wishnick
Glenn Grzonka	Vivian Mitchell	Kara Schoenhofer	Deborah Witt
Susan Haimes	Lori Montana	Paul Schoenwetter	Jennifer Wolff
Gina Hansen	Patricia Moody	Cindy Schwarz	Mark Woodward
Angeline Heisler	Joseph Moore	Brian Scott	Dalia & Scott Wovoniec
Pam & Fred Hess	Jen & Jim Murphy	Sharon Seeder	Sarah Yawn
Donna Higgins	Erika Napoletano	Carol Borden & Joel Shapiro	Tague Zachary
James & Lois Hobart	Susan & Patrick Nash	Meg Kennedy Shaw & Jack Cederquist	Ali Zaidi
Mary Alice Hope	Patricia Nedeau	Peggy & Don Shearn	Valerie Zawada
Linda Horwitch	Chad Newman	Lauren Simon	
Katherine Hutchison	Juanita & Toby Nicholson	Norm Sloan	
Judith & Tony Iacuzzi	Eva Niewiadomski	Audrey Smilgys	
Mia Jacob	Susan Noel	Gwen Smuda	
Stasha Jain	Bill Oben	Lauren Snider	
Molly Moore Johnson	Etta Oben	Mary Solt	
Suzanne Johnson	Nick Obis	Gail & Bob Spiel	
Pam Kaul & Andy Berman	Gay Byrne Olk	Daniel Stack	
Charlotte & David Kempner	Amanda & Doug Passmore	Lisa Stebbins	
The Kenney Family	Rahnee Patrick	Timothy Stewart	
Phyllis Klapman	Everett Pepin	James Stimac	
Elizabeth & Gregory Knapp	Alice Perlin & Ray Bacon	Kelly Stone	
Peg & David Kritzler	Rachel Perlman & Steven Grossman	Lesley Stone & Ed Furman	
Brian Kulaga	David & Becky Perry	Rick Stoneham	
Nada Kuzmanovic	Anne Phillips	Jeffrey Strayer	
	Hao Phung		

Join this illustrious group by making a tax deductible donation to Steep Theatre at the box office or at steeptheatre.com.

STEEP INTO 1113: BERWYN EXPANSION CAMPAIGN DONORS

This list reflects campaign gifts and pledges received before Sept. 12, 2018.

Campaign Leaders (\$1000 and up)

Anonymous
Casey Blass &
Lee Manford
David Bock
Reid & Jennifer Quinn
Broda
Dean & Caroline
Browell
Susan Burland &
George Plumb
Ken Burlington
Carpenter Financial
City of Chicago
Holly & David Collins
Robert D. Collins Fund
Kassie Davis &
Bruce Beatus
Sonya Dekhtyar
The Edgewater
Chamber of
Commerce
Kelly Fitzgerald
Gregg Gilman
Elaine Glusac &
Dave Bartusek
Susan & Peter Gray
Dorothy Harza
Leigh & John
Hourihane
Peter James
Stephen H. Johnson
Rita & Jim Knox
Kerry & Kenny Lassus
Sara & Adam Levy
Shana Lowitz &
William Swaim, M.D.
Ted Lowitz
Susie & Tom MacLean
Cooper Melgreen
Barbara & Ed Mills
Anne Marie Dumas
Mitchell
Anne & Richard Moore
Jen & Peter Moore
Kate L. Moore
Peter & Margaret
Morris

James T. O'Neill
Doug & Amanda
Passmore
Pepsico Foundation
Catherine & Jon
Putnam
Melissa & Jeff Riemer
Ted Ries
Alan & Debra
Rosenberg
Gregory Rothman
Mike J. Salinas
Karen & Frank
Schneider
Jessica & Christoph
Schrey
Elisabeth Rose &
Owen Shapiro
Hope & Jeff Sheffield
Kate Welborn &
Ann McGill
Anna Wermuth &
Alex Gillmor
Lisa & Randy White

Campaign Supporters (up to \$999)

Anonymous
Elina Abugov
Aurora Adachi-Winter
David & Ilene Alex
Catherine Allen
Stacy Bosma &
James Allen
Aon Foundation
Anne Marie & Joseph
Arden
Peggy Bagley & Rabbi
Douglas Goldhamer
Larry Baldacci &
Ray Cunha
Jeff Baldassarra
Katrina Balog
Hannah Basil &
Caleb Bryant
Rollie Batten
Carlos Bekerman
Deanna Berman
Jonathan Berry

Rachel Birnbaum
Larissa & Matt Bishop
Bindy Bitterman
Cathy & Trip Blair
Joan & Hank Bliss
Marsha Bock
Michael Bock
Theresa Boland
Bingo Bronson
Karen A. Callaway
Lacy Katherine
Campbell
Lucy Carapetyan &
Josh Bell
Bruce Caris
Sharon Carr
CDW
George Cederquist
Rose Cervantes
Karen Chen
Liya Chernyakova
Kevin Christophersen
& Mark Marple
Ana Cloninger
Michelle Courvais
Carol Crane
Sean D'Esposito
Gwen Daniels
Andrew de Funiak
Maria & Brad
DeFabo Akin
Alla Dekhtyar
Rainee Denham
Suzanne Deveney &
Bob Isaac
Raphael Diaz
Alyssa Dickman
Vincent DiFruscio &
Neil Averick
Natasha Dimitrienko
Lisa Disch
Thomas Dixon
Brian Donegan
Patricia Donegan
Lisa Donovan &
Bradford Smith
Autumn Dornfeld
Ronald Duda
Peter Dully

Ed Dumas
Pat & Al Dumas
Tim Dumas
Kenneth East &
Timothy Thurlow
Jonathan Edwards
Brian Ellison
Joyce & Jim Elmes
Erdmann Family
Suzanne Faber
Connie Fairbanks
Clay & DJ
Fenstermaker
Fierce Productions
Steve Fiffer
Barbara Figgins
Molly Finnegan
David Fisch
Dan Flannery
Duane Flatt
Gene Flynn
Patrick Ford
Marshall Fryman
Sallie Gaines &
Mark Richardson
Bryce Gangel
Stephanie Garrison
Beth Geatches
Cecilia Germaine
Katherine Gharriy
Michael Glusac
Nan Glynn
Cruz Gonzalez-Cadel
Estefania Gonzalez
Solveyra
Anne & Douglas
Gordon
Prudy & Jacques
Gourguechon
Deborah Granite
Carol & Alan Greene
Thomas Greene
The Greenlee Family
Jason & Tina Gross
Alex Gudding
John Hahm
Joe Hartness &
Troy Baresel



BERWYN EXPANSION DONORS, continued

Marilyn Heckmyer & Gerald Landy	Cynthia Marker	Laura & Joel Reitsma	Tim & Adrienne Stewart
Dr. Anna Hertsberg	Joan & Jerry Mattson	Richard Renfro	James Stimac
James & Lois Hobart	Dan McArdle	Bruce Robbins & Shelley Rosenstein	Jeffrey Strayer
Hannah Hodak	Barbara McCaffrey	Luba Romantseva	Rachel Sullivan
Dave Hoffman	Debbie & Jim McGrew	Emily Roschek	Jim Swanson
Donna Holmes	Chris Miller	Karen & Charlie Rose	Jean Taylor
Brad Horman	Dorothy Milne	Vivian & Louis Rosen	Ray Thompson & WPNT Communications
Holly Humphreys	Jay S. Mitchell	Sue & Phil Rosenberger	Margaret & Joe Tilson
Peter Jaffe-Notier	Pamela J. Monaco	Mimi Rosenbush	Ann & Richard Tomlinson
Tamara & Neil Jain	Anna Monroe	Jeff & Melissa Ross	Merle Tresser
Jared Johnson	Betsy Moore	Peggy Rubens	Matthew Trewartha
Molly Moore Johnson	Linsey Morton	Vera Rubinstein	Brian Trippel
Jacob Juntunen	Colleen & John Mueller	Brant Russell	Bob & Linda Trippel
Robin Kacyn & Matt Chapman	David Mueller	Sara Ryan & Erik Kessler	Mary Twomey
Pam Kaul & Andy Berman	James Munson	Shawn P. Sackett	William Udovich
Josh Kelley	Cecelia & Thomas Murphy	Salon On Barrington	Frank Valadez
Charlotte & David Kempner	Ann Murray	Hunter Sanders & Jason Proper	Vicky Vegh
Maureen Khadder	Erika Napoletano	Alexander Savchenko	G. Vo
Colleen Kiernan	Susan & Patrick Nash	Nancy Schaefer	Brent Walker
Stu Kiesow	Caroline Neff	Barbara Schmitt	Richard Walters
Thad King	Martina & Tom Neff	Joanie Schultz & Francesco Milioto	Laura & Robert Watson
Pat King	Alison Nelson	Hugh Schulze	Staci Weigum
Chauncey & Ken Kingsbury	The Jordan & Jean Nerenberg Family Fund	Jeff Sciarba	Sally & Mark Weiss
Elizabeth & Gregory Knapp	Hillary & Ian Newcomer	Susan & Gary Segal	Allison Welch & Alex Pederson
Svitlana Kochman & Francis O'Hern	Chad Newman	Marina Semenova	Victoria & Sean Wiedel
Jean Marie & Robert Koon	Northern Trust	Robert Sempsey	Dr. Jan Willer & Mark Osing
Justin Koziatek	Jen & Kevin O'Malley	Laurie Shaman & Ed Hinkley	Margaret Winsor
Peg & David Kritzler	Linda Packer & Stuart Rathje	Karen Shankman & James Fruehling	Virginia Witucke
Thomas & Michael Kuhn	Liz & Pat Parsons	Timothy Sherck	Mark Woodward
Robb Lady	Kaye & Bob Passmore	Brian Sheridan	The Worsham Family Foundation
Eli Lampson	Kalpna Peck	Bill & Cathy Siple	Shannon Worsham
Barbara Lancot	Philip Pement	Julia Siple & Kelly Carpenter	Nancy Young
Lauren Lassus	Alice Perlin & Ray Bacon	Norm Sloan	Marsha Zakaria
Michael Lemmon	Rachel Perlman & Steven Grossman	Audrey Smilgys	Joseph Zambrano
Sarah Leonard & Brian Bush	Perlstein Family	Dan Smith	
Katrina Levental	Lauralyn Persson	Toni Sandor Smith	
Diane & Michael Levy	Kate Piatt-Eckert & Tony St. Clair	Brian Solem	
Sara Lin & Paul Brown	Georgette Pliml	Julia Spann & Paul Carapetyan	
David Lind	Sandra Popik	Barbara & Charles Spaulding	
H. B. Lottero	Blair Price	Lyn Spillman & Russell Faeges	
Ricki & Joshua Lowitz	Jerry Proffit	Steve & Wendy St. John	
Daniel Lunney & Marco Espinoza	Barbara Provus	Vanessa Stalling	
Beth Lynch & JP Nugent	Maria Ptouchkina	Ben Stevens	
Cecile Margulies	Anne Puotinen		
	The Purcell Family		
	Nate Ramin		
	Kate Ramos		
	Tyler Reinert		


**FREE
Parking!**



Order Online @
www.PizzeriaAroma.com
75 YARDS WEST
 **Berwyn**

(773) 769-4900 • 1125 W. Berwyn Ave.

1 block north of Broadway & Foster Ave.

Mon-Thur: 11am - 11pm • Fri & Sat: 11am-Midnight • Sun: ~~Now~~ 11:30am-11pm LAST CALL 30 MINS BEFORE CLOSE

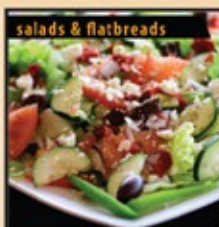
- **Broiled Ribs & Chicken**
- **Gluten Free Pizza**
- **Buffalo Wings!!!**

- **BYOB**
- **Vegetarian Delights**
- **Home of the NUTELLA Pizza**



Est 2014
Chicago GRIND 

www.ChicagoGrind.com
5256 N. Broadway • Chicago
(773) 784-1305



Stop in before the Show!

STEEPING AROUND TOWN

Steep's ensemble is busy making theatre around Chicago and across the country.

Ashleigh LaThrop will appear in a Netflix show called *Kominsky Method* with Michael Douglas and Alan Arkin.

George Cederquist is George Cederquist is directing *Ellis Island*, a collaboration between Steep and the Chicago Sinfonietta featuring **Lucy Carapetyan** and **Patricia Donegan**, in September. At Chicago Fringe Opera, where he is Artistic Director, he'll direct the company's fall production of Paul Hindemith's *The Long Christmas Dinner*.

JR Edwards is a writer on Alan Ball's HBO series *Here, Now*.

Krisin Leahey is an assistant professor at Boston University and is dramaturging the world premiere of Kate Hamill's *Little Women* at the Jungle Theatre, which **Chelsea Warren** is designing.

Peter Moore will be appearing this fall in the world premiere of Calamity West's *In the Canyon* at Jackalope Theatre. He will then be appearing in *Ma Rainey's Black Bottom* at Writers Theatre, opening in February.

Joanie Schultz continues to serve as Artistic Director of the WaterTower Theatre in the Dallas, Texas, area.

Steppenwolf's SYA production of *The Curious Incident of the Dog in the Night-Time* will be directed by **Jonathan Berry** with lighting design by **Brandon Wardell**, and the role of Siobhan played by **Caroline Neff**.

Brandon Wardell will design *The Father* at Remy Bumppo, directed by Kay Martinovich and *Cardboard Piano* at Timeline directed by Mechelle Moe.

After directing *Linda* for Steep this past summer, **Robin Witt** is back in North Carolina teaching at UNC Charlotte.

STEEP'S SEASON 18 MEMBERS

This list reflects Season 18 Members as of Sept. 12, 2018.

Andrea Biel-Cohen
John Bistolfo
Ken Burlington
Karen Callaway
Ann & Richard Carr
Jan Chattler
Kassie Davis &
Bruce Beatus
Suzanne Deveney &
Bob Isaac
Vincent DiFruscio &
Neil Averick

Lisa Donovan
Suzanne Elkins Rose
Gloria Friedman
Gregg Gilman
Lee Glazer
Nancy & Bob Goldin
John Hahm
Dorothy Harza
Stu Kiesow
Thad King
Gregory Lewis
Ted Lowitz

Andrea Mitchel
Pamela Monaco &
Don Kehne
Betsy Moore
James T. O'Neill
Susan Payne
Nancy Schaefer
Karen & Frank
Schneider
Jessica & Christoph
Schrey
Hope & Jeff Sheffield

Susan Stephenson
Barbara & Randy
Thomas
Laura & Robert Watson
Kate Welborn &
Ann McGill
Anna Wermuth &
Alex Gillmor

**Join the Steep family by becoming a member of our 18th Season.
Learn more at the box office or at steeptheatre.com.**

SPECIAL THANKS

Jason Akemann
Charlotte Berry
The Blackstone Hotel
Mary Brennan
Ally Brisbin
Broadway in Chicago
Elana Boulos
Amber Calderon
Deb Clapp
Columbia College
Chicago
Kimberly Corrigan

Erica Daniels
Rainee Denham
Diane & Ian Galleher
Elaine Glusac
Jerry Goodman
Jane Hollinger
The House Theatre
Kosmo Music
Deirdre Kinahan
Kurt Kolar
Eileen LaCario
Leo Mendoza

Liz McGarry
Elisa Miller
Lee Miller
Gabe Morrison
Alderman Harry
Osterman
Kelly Parker
John Paulun
David Raino-Ogden
David Reed
Jeff Riemer
Beth Rohlmeier

Meaghan Schneider
Adrienne Smith
The School at
Steppenwolf
Alderman Mary Ann
Smith
Patrick Shanahan
Ben Thielm
Bart Vivian
Jack Wallace
Ernst Walter

IN-HOUSE FULL COLOR DIGITAL OFFSET PRESS!



ON-DEMAND DIGITAL PRINTING
IN-HOUSE DIGITAL OFFSET PRESS
GRAPHIC DESIGN
VARIABLE DATA SOLUTIONS
LARGE FORMAT SIGNAGE
MONTHLY MAGAZINES
NEWSLETTERS / BOOKLETS
RESTAURANT MENUS
MAILING SERVICES
SPECIALIZED FINISHING

- Serving Edgewater, Chicagoland and all Suburbs for over 20 years,
- ALLIED PRINT AND COPY offerings have improved, as if that were even possible! Our new state of the art digital equipment will allow us to
- serve you better than ever with even faster, higher quality reproduction services! And of
- course we still offer the best in single color to full color Offset Printing! Let our design
- department dazzle you with eye catching
- graphics, clean professional design and the knowledge to help you complete your ideas to
- create the desired effect to get your company or
- personal project recognized! This is just a few of the services ALLIED PRINT & COPY can
- provide, so call us or stop in TODAY!

QUICK TURNAROUND!
SAME DAY SERVICES
AVAILABLE!

NOW OFFERING!
Full Color Envelope Printing



allied print & copy

DESIGN | PRINT | SIGN

**FREE
PICK-UP
& DELIVERY**

**5640 N. BROADWAY
CHICAGO, ILLINOIS 60660.**

**LET US
QUOTE
YOUR NEXT
JOB**

Call: 773.334.5200 / 773.334.5488

Fax: 773.334.5757 • info@alliedprintandcopy.com

www.alliedprintandcopy.com

Hours: Monday - Friday: 9:00 am - 5:00 pm

Saturday: 10:00 am - 4:00 pm



Steep Theatre Company is a dedicated, close-knit group of forty-one actors, directors, designers, and writers driven by a shared commitment to the organizations's mission: *To bring out the everyday truths in the stories we tell through ensemble work and to reach out to non-traditional theater goers by seeking out stories and creating experiences relevant to them.*

We believe theatre should stoke conversations about the issues and conditions that are a part of all of our lives; conversations that take place among artists and audiences in the theatre, in the lobby, and long after everyone has gone home. Steep's goal is to inspire and add voices to these conversations. We strive to reach people who may have abandoned theater as a relevant art form by telling stories that touch their lives in real and palpable ways and by creating an environment that is welcoming to everyone.

PRODUCTIONS

Linda by Penelope Skinner. July 2018
Birdland by Simon Stephens April 2018
*Hint** by Calamity West Jan 2018
The Invisible Hand by Ayad Akhtar. . . Oct 2017
Lela & Co. by Cordelia Lynn July 2017
Hookman by Lauren Yee. April 2017
Earthquakes in London
by Mike Bartlett Jan 2017
*Bobbie Clearly** by Alex Lubischer. . Sept 2016
Wastwater by Simon Stephens July 2016
The Few by Samuel D. Hunter April 2016
Posh by Laura Wade Jan 2016
*The Cheats** by Hamish Linklater . . Oct 2015
Brilliant Adventures
by Alistair McDowall. July 2015
Martyr by Marius von Mayenburg . . April 2015
The Life and Sort of Death of Eric Argyle
by Ross Dungan Jan 2015
The Vandal by Hamish Linklater. . . . Oct 2014
A Small Fire by Adam Bock. July 2014
If There Is I Haven't Found It Yet
by Nick Payne May 2014
strangers, babies by Linda McLean. . Jan 2014
Motortown by Simon Stephens . . . Sept 2013
Fallow by Kenneth Lin. July 2013
The Knowledge by John Donnelly . . April 2013
Luther by Ethan Lipton Jan 2013
Making Noise Quietly
by Robert Holman Oct 2012
Moment by Dierdre Kinahan July 2012
The Receptionist by Adam Bock. . . . April 2012
Love and Money by Dennis Kelly . . . Jan 2012
Under the Blue Sky
by David Eldridge Oct 2011
Pornography by Simon Stephens. . . . July 2011
Festen by David Eldridge, Thomas Vinterberg,
Morgan Rukov, Bo Hr. Hansen May 2011
Lakeboat by David Mamet Jan 2011
A Brief History of Helen of Troy
by Mark Shultz Sept 2010
2,000 Feet Away by Anthony Weigh. . May 2010
Harper Regan by Simon Stephens. . . Jan 2010
Kill the Old Torture Their Young
by David Harrower Oct 2009

The Hollow Lands by Howard Korder June 2009
Parlour Song by Jez Butterworth . . March 2009
In Arabia We'd All Be Kings
by Stephen Adly Guirgis Jan 2009
*Seven Days** by Egan Reich Oct 2008
Greensboro: A Requiem
by Emily Mann May 2008
Breathing Corpses by Laura Wade . . Feb 2008
Coronado by Dennis Lehane Sept 2007
Insignificance by Terry Johnson July 2007
The Resistible Rise of Arturo Ui
by Bertolt Brecht May 2007
Otherwise Engaged by Simon Gray . . Feb 2007
The Last Days of Judas Iscariot
by Stephen Adly Guirgis Sept 2006
Bang the Drum Slowly by Mark Harris,
adapted by Eric Simonson. June 2006
Of Mice and Men
by John Steinbeck March 2006
The Night Heron
by Jez Butterworth March 2006
Catch-22 by Joseph Heller Oct 2005
Book of Days by Lanford Wilson. . . . June 2005
Incident at Vichy by Arthur Miller . . . March 2005
Howie the Rookie by Mark O'Rowe . . Oct 2004
Dealer's Choice by Patrick Marber . . . Aug 2004
The Time Trial by Jack Gilhooley. . . . May 2004
The Hothouse by Harold Pinter Aug 2003
Below the Belt by Richard Dresser . . . Aug 2003
My Donkey Lady by John Wilson Aug 2003
The Job by Shem Bitterman May 2003
The Aspidistra Code
by Mark O'Rowe Oct 2002
Geography of a Horse Dreamer
by Sam Shepard June 2002
*These Flowers are for My Mother**
by Michael McGuire March 2002
Pvt. Wars by James McLure Sept 2001
Search and Destroy
by Howard Korder. Aug 2001
Life During Wartime
by Keith Reddin March 2001

* World Premiere

THE STEEP PASS



For only \$90, a Steep Pass gets you:

- a reserved seat at each of Steep's next 4 plays - that's a 40% savings on a year's worth of theatre,
- discounted tickets for your friends,
- a standing invitation to Steep's famous post-show parties.

Plus, the Steep Pass is super flexible - changing your dates is always free and easy.

Ask about the Steep Pass at the box office or check it out online at steeptheatre.com/pass.

UP NEXT AT STEEP...

Red Rex

by Ike Holter, directed by Jonathan Berry

A small theater company moves into an abandoned Chicago storefront. Lead by their adventurously thirsty artistic director, they embark on an explosive new play with the hope of finally breaking it big. When the ensemble realizes their source material might not be as original as once assumed, they are thrust into an intense confrontation with residents of their new community, who not only want them out, but will take their story back by any means necessary. *Red Rex* is the sixth play in Ike Holter's seven-part "Rightlynd saga," which also includes *Exit Strategy*, *Prowess*, and *The Wolf at the End of the Block*.

January 24 – March 2, 2019