

# MOSQUITOES



by Lucy Kirkwood directed by Jaclynn Jutting



# STEEP THEATRE COMPANY

## ENSEMBLE MEMBERS

James Allen	Peter Dully	Caroline Neff	Julia Siple
Jonathan Berry	Jonathan Edwards	Jim Poole	Sasha Smith
Lucy Carapetyan	Nate Faust	Egan Reich	Kendra Thulin
George Cederquist	Alex Gillmor	Joel Reitsma	Robin Witt
Matthew Chapman	Nick Horst	Melissa Riemer	Brendan Melanson
Brad DeFabo Akin	Lauren Lassus	Brandon Rivera	<i>in memoriam</i>
Maria DeFabo Akin	Ashleigh LaThrop	Michael Salinas	
Thomas Dixon	Cynthia Marker	Amber Sallis	
Patricia Donegan	Peter Moore	Joanie Schultz	

---

## ARTISTIC ASSOCIATES

Catherine Allen	Jon Ravenscroft	Simon Stephens	Brandon Wardell
Kristin Leahey	Alison Siple	<i>Assoc. Playwright</i>	Chelsea M. Warren
Emily McConnell		Dan Stratton	Ellen Willett

---

## BOARD OF DIRECTORS

Doug Passmore <i>President</i>	Anne Marie Mitchell <i>Vice President</i>	David Bock <i>Treasurer</i>	Kelly Fitzgerald <i>Secretary</i>
Dave Bartusek	Sonya Dekhtyar	Ted Lowitz	Anne Puotinen
Kelly Carpenter	Ian Galleher	Cooper Melgreen	Jessica Schrey
Louis Chieng	Stu Kiesow	Elizabeth Moore	

---

## EMERITUS BOARD

Neil Jain	Jon Putnam
Molly Johnson	John White
Katie Kett	Sara Levy
Jen Moore	

---

## FRIENDS OF STEEP

Heidi Brock	Diane Galleher
Reid & Jennifer	Barry Grant
Quinn Broda	Christine Rousseau
John Dunnigan	Craig Steadman

---

## STAFF

Peter Moore <i>Artistic Director</i>	Lucy Carapetyan <i>Casting Director</i>	Lee Miller <i>Photographer</i>	Brad DeFabo Akin <i>Bartender</i>
Kate Piatt-Eckert <i>Executive Director</i>	Caroline Neff <i>Casting Director</i>	Gregg Gilman <i>Photographer</i>	Kelsey McGrath <i>Bartender</i>
Julia Siple <i>Managing Director</i>	Egan Reich <i>Literary Manager</i>	<b>THE BOXCAR</b>	Abbas Salem <i>Bartender</i>
Lisa Troi Thomas <i>Program &amp; Box Office Manager</i>	Stu Kiesow <i>Graphic Designer</i>	Thomas Dixon <i>Artistic Curator</i>	
		Ryan Kling <i>Bar Manager</i>	

---

Steep Theatre is supported by the Bayless Family Foundation, a CityArts Grant from the City of Chicago Department of Cultural Affairs & Special Events, the Illinois Arts Council Agency, the National Endowment for the Arts, the Arts Work Fund, the Alphawood Foundation, the MacArthur Fund for Arts & Culture at the Richard H. Driehaus Foundation, the Gaylord & Dorothy Donnelley Foundation, the A.L. and Jennie L. Luria Foundation, the Jordan & Jean Nerenberg Family Fund, the Rothman Family Foundation, the Saints, and the Pauls Foundation. Steep is a member of the League of Chicago Theatres and Theatre Communications Group.

---

## STEEP THEATRE COMPANY

1115 West Berwyn, Chicago, IL 60640

www.steeptheatre.com • info@steeptheatre.com • (773) 649-3186



Steep Theatre Company

proudly presents the U.S. Premiere of

Mosquitoes

by Lucy Kirkwood

CAST (in order of appearance)

Jenny	Julia Siple^
Alice	Cindy Marker^
The Boson / Lyn Evans	Richard Costes
Luke	Alexander Stuart
Natalie / Ensemble	Upasna Barath
Karen	Meg Thalken*
Henri / Ensemble	Peter Moore^
Gavriella / Ensemble	Elle Walker
Journalist / Ensemble	Amber Sallis^

UNDERSTUDIES

Jenny	Liz Sharpe
Alice	Amy Johnson
The Boson / Lyn Evans / Henri	Rio Ragazzone
Luke	Alex Levy
Natalie	Menaka Deolekar
Karen	Judi Schindler
Gavriella / Journalist	Lisa Troi Thomas

PRODUCTION STAFF

Director	Jaclynn Jutting
Stage Manager	Lauren Lassus^
Scenic Designer	Sotirios Livaditis
Lighting Designer	Brandon Wardell^^†
Costume Designer	Emily McConnell^^†
Sound Designer & Composer	Kevin O'Donnell
Props Designer	Russell Langdon
Projection Designer	Stephan Mazurek
Violence Choreographer	Almanya Narula
Dialect Coach	Cate Gillespie
Assistant Director	Emily Antoff
Production Manager	Lila Gilbert
Technical Director	Evan Sposito
Master Electrician	Alon Stotter
Scenic Charge Artist	Jamie Kreppein
Assistant Stage Manager	Isaac Jay Pineda

^Steep Theatre Ensemble Member ^^Steep Theatre Artistic Associate †Member of United Scenic Artists Local 829  
\*Member of Actors' Equity Association, the Union of Professional Actors and Stage Managers.

Mosquitoes is presented by special arrangement with Dramatists Play Service, Inc., New York. The video and audio recording of this show is strictly prohibited. You may take photos of the stage before or after the show, but not when actors are present. If you post these photos online or elsewhere, please credit the production's designers listed above.

Season 19 Sponsor: The Bayless Family Foundation

This production of Mosquitoes was sponsored by: Susan Burland & George Plumb, Ken Burlington, Colleen & John Mueller, and Jan Willer & Mark Osing



# Taste of New Orleans Edgewater Chicago

# PEARL'S

**SOUTHERN COMFORT**

AUTHENTIC CUISINE

5352 N Broadway  
Chicago, Illinois  
[pearlschicago.com](http://pearlschicago.com)



# DIRECTOR'S NOTE

January 2009 was the first time I saw a play at Steep. It was *In Arabia We'd All Be Kings*. Ever since then, I've admired this company of talented artists who treat those of us that walk through their doors like family. In a city of so many moving bodies traveling through time and space, I never feel alone when I'm at Steep.

Lucy Kirkwood's *Mosquitoes* reminds us that we are all particles on our own disparate paths. It's a play that fuses science with the nuclear family, addressing the dynamics of our world — both the cosmic macro and micro reality of our relationships with each other. Some of these characters, like us, are driven by a need to know how the universe fits together and our place in it. Others need to be able to pick up a phone and connect when we are the most scared or alone — to know that we have someone on the other end who listens to our greatest fears and the songs we create. Who stands alongside us in birthing the moments and miracles that we know are rare, but possible.

For the science community, locating the existence of the Higgs Boson in 2008 was one of those rare births. Its existence validated life-long careers and explained how we are all connected through time and space — our past, present and our future. This God's particle is responsible — as the 16-year old Luke tells us — for giving us mass. In the same way that our relationships — whether it be with a fellow artist, a sibling, a lover or a parent — are what give us mass and our lives meaning. The truth about this spectacular long-awaited particle is the discovery that it, like us, is capable of decay. It can split. When we enter the ATLAS control room with these scientists, we stand with them at the brink of what is next in our ability to achieve, to theorize, to wonder?

It's this portentous moment that Lucy Kirkwood seems interested in. The possibility of the miracle but also our own capacity for self-destruction. What I love about this play is that it asks us to consider what could split us? What could split a marriage or a country? Because the matriarch of this play is right, the world is held together by fundamental forces, but our model of existence also includes the Weak Force. Things and people can and do fall apart.

The Boson knows these forces too well. He is our guide through the past, equipped with the knowledge of its impacts on our future. We, like the play's characters, are indeed a fractured people and public. Occasionally in our families, certainly in our countries. As we stand at this fork in the road, a part of the chain reaction of human existence, Lucy Kirkwood's *Mosquitoes* asks us to consider the impact of the individual's life choices on us all.

Jaclynn Jutting  
Director, *Mosquitoes*

# CAST



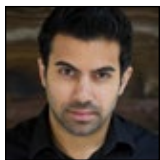
**Julia Siple (Jenny)** Julia is fortunate to be back on stage at Steep where she is an ensemble member. Previous Steep credits include *The*

*Life and Sort of Death of Eric Argyle*, *Motortown*, *A Small Fire*, *Under the Blue Sky*, *Love and Money*, *Moment*, *Festen*, and *Harper Regan* as well as many others (this is show #20!). She holds a BFA in Theatre Performance from the University of Michigan. Julia can't imagine life without her Steep family. Deepest gratitude to her parents for making this possible. And especially to Carp and her babycakes Olive, the centers of her little universe.



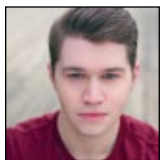
**Cindy Marker (Alice)** Cindy most recently appeared in *Zürich*, *Linda*, and *Birdland* and is happy to be part of this production. Many congratulations to the

immensely talented cast and crew!



**Richard Costes (The Boson / Lyn Evans)** Richard is thrilled to be returning to Steep Theatre after appearing in *Wastwater* in 2016. Chicago credits include Reverend D/

Baby in *In the Blood* (Red Tape Theatre), Snout in *A Midsummer Night's Dream* (Chicago Shakespeare Theatre), Arjun in the *Opportunities of Extinction* (Broken Nose Theatre), the Stage Manager in *Our Town* (Redtwist Theatre), and Astrov in *VANYA (or, "That's Life!")* at Rasaka Theatre. He has been fortunate to perform in many other shows throughout Chicago, Ohio, and New York. He is a graduate of Kent State University and is represented by Gray Talent.



**Alexander Stuart (Luke)** Alexander is ecstatic to be making his Steep debut this season! Within the past year, Alex could be seen playing Christopher in *The Curious*

*Incident of the Dog in the Night-Time* at both the Actors Theatre of Louisville and Florida Studio Theatre. Before that, he worked with

such Chicago theaters as Interrobang Theatre Project, Citadel Theatre Company, and Prop Thtr. He is a proud alumnus of the Columbia College Chicago acting program, from which he also received training as a stage combatant and fight choreographer. Love and thanks to the family, friends, roommates, and you! Stay golden. [www.alexanderjstuart.com](http://www.alexanderjstuart.com)



**Upasna Barath (Natalie)**

Upasna is ecstatic to be making her professional debut with Steep Theatre. She recently graduated from North Central College in

Naperville, IL with double majors in Economics and Theatre. Her previous work includes NCC productions of *The Opportunities of Extinction* (dir. Kristen Osborn) and *The Laramie Project* (dir. Carin Silkaitis). She is also a playwright; her one-act play *The Choice is Yours* was the runner-up for the 2019 Judith Barlow Prize. Upasna is now pursuing a Masters of Science in Leadership for Creative Enterprises at Northwestern School of Communication. She would like to thank her family and friends for their constant love and support.



**Meg Thalken (Karen)** Meg has worked at Steppenwolf Theatre Co, Goodman Theatre, The Den, Actors' Theater of Louisville, Route 66, Detroit Public Theater,

Victory Gardens, Next Theater, Northlight Theater, Chicago Dramatists, Travel Light, Wisdom Bridge, Pheasant Run, and The Playhouse, among others. TV credits: *The Haven*, *Shameless*, *Easy Abby*, *Empire*, *Chicago Fire*, *Detroit 187*, *ER (recurring)*, *Joan Cusack Show*, *Turks*, *Chicago Hope*, *Early Edition*, *EZ Streets*, *The Untouchables*, *Chicago Story*, *Jack & Mike*, *Justice: Greylord Style*, *The Richard Speck Case* and *Through Naked Eyes*. Film credits: *Henry Gamble's Birthday Party*, *This Day Forward*, *Bad Johnson*, *Hannah Free*, *Check Please*, *The Company*, *U.S. Marshals*, *Poltergeist III*, *A Family Thing*, *The Babe*, and *Class*.

## CAST, continued



**Peter Moore (Henri)** Pete is a founding member and the Artistic Director of Steep. His Steep credits include

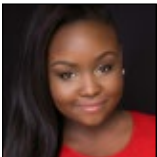
*Pomona, Linda, Birdland, Hinter, Earthquakes in*

*London, The Cheats, The Few, Wastwater, Motortown, Pornography, Harper Regan, Brilliant Adventures, Love & Money, strangers, babies, Festen, The Life and Sort of Death of Eric Argyle, If There is I Haven't Found it Yet, A Brief History of Helen of Troy, and a few other impossibly long titles. Outside credits include Ma Rainey's Black Bottom (Writers Theatre); In the Canyon (Jackalope Theatre); The Crucible (Steppenwolf Theatre); and The Downpour (Route 66 Theatre), among others. TV/Film credits include The Red Line (CBS); Chicago Justice, Chicago Fire, and Chicago PD (NBC); the television pilot Convergence; and the Bollywood blockbuster Dhoom 3. Pete is a graduate of Bowdoin College and The School at Steppenwolf and is represented in India and the states by Paonessa Talent.*



**Elle Walker (Gavriella)** Elle is thrilled to work alongside the amazing artists at Steep for the first time. Her favorite Chicago credits include

*Madge in Picnic (American Theater Company), Cinderella at the Theatre of Potatoes (The Den), Dracula (The Hypocrites), The Addams Family (Mercury Theater), and three summers as a featured artist with The Fly Honey Show (the Inconvenience). TV/Film: Kappa Force, Two in the Bush. She is represented by Paonessa Talent. Instagram: @malortandsavior.*

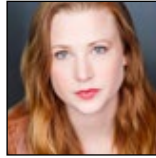


**Amber Sallis (Journalist)**

Amber is beyond excited to be a new ensemble member and a part of such an amazing cast. Amber's theatrical credits include

*Pomona, Earthquakes in London, Hinter, Zürich and Birdland (Steep Theatre), The Last Days of Judas Iscariot (Eclectic Full Contact Theatre), Covenant (Creating Justice Conference), and A Snowy Day and Other Stories (Emerald City Theatre). Amber was*

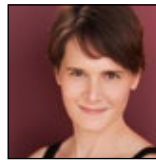
named one of the *Chicago Tribune's* Hot New Faces of 2017. She is a 2016 Graduate of Northern Illinois University with a BFA in Acting and studied at MXAT theatre school in Moscow, Russia. Amber would like to give a huge thank you to her loving and forever supportive family.



**Liz Sharpe (U/S Jenny)**

Liz is thrilled to be working with Steep for the first time, on this beautiful play with such an incredible group of artists. Her latest credits

include *In the Canyon* (Hope) at Jackalope Theatre, *Byhalia MS* (Laurel) at the Den Theatre and Steppenwolf's 1700 Space, and *SLICE* (A24) as Dana. She is represented by NV Talent.



**Amy Johnson (U/S Alice)**

Amy's first full Chicago production was with Steep Theatre in their 2nd full production, many moons ago. As a big fan of Lucy

Kirkwood, she is delighted to be working with Steep on this thrilling play. Most recently, she was seen in *Bechdel Fest 7* with Broken Nose Theatre at Steppenwolf 1700. She was honored with a Jeff Award for Best Actress in a Play for her work in *Falling* with !nterrobang Theatre Project and has had the privilege to work with several Chicago theatres. She received her MFA from the University of Nebraska, Lincoln. amyjeanjohnson.com.



**Rio Ragazzone (U/S The Boson / Lyn Evans / Henri)**

Rio is thrilled to be working with Steep Theatre Company for the first time. Other Chicago credits include

*Much Ado About Nothing, You Can't Take It With You,\* Taming of the Shrew* (Oak Park Festival Theatre, \*u/s); *In the Canyon* (Jackalope Theatre Company, u/s); and *Armonica's: The Secret Gem of the Southwest Side* (Jackalope Groundworks Series.) Rio holds his Bachelor's degree in Theatre Arts from New Mexico State University and is a proud artistic associate of Oak Park Festival



FIERCE PRODUCTIONS  
PRESENTS

# Fierce & Deadly Halloween

An exclusive *Seven Deadly Sins* Halloween party with magic, burlesque, dancing, and open bar at a private, members-only club in Lincoln Park.

Visit [FierceHalloween.Eventbrite.com](http://FierceHalloween.Eventbrite.com)

Enter Code **STEEP** for  
\$10 off!



26  
OCT  
2019



EVENTS THAT DARE TO BE *DIFFERENT*  
WEDDINGS | EVENTS | DESIGN | CHICAGO & WORLDWIDE

[www.Fierce-Productions.com](http://www.Fierce-Productions.com)



## CAST, continued

Theatre. Everything he does is dedicated to his late mother, Sarita Ragazzone.



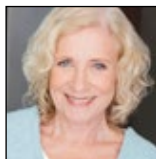
**Alex Levy (U/S Luke)** Alex is a graduate of the School of Theatre and Dance at Illinois State University with a B.A. in Acting. Chicago theatre credits: *Next to Normal*

(Writers Theatre), *Phoebe in Winter* (Facility Theatre), and *HAIR* (Metropolis Performing Arts Centre). Regional theatre credits: *Hamlet*, *Twelfth Night*, *Peter and the Starcatcher*, and *Rodeo* (Illinois Shakespeare Festival). TV credits include appearances on *Chicago Fire* (NBC) and *Empire* (FOX). Alex is proudly represented by Grossman & Jack Talent.



**Menaka Deolekar (U/S Natalie)** Menaka is comedian, actor, and dog Mom who would like to thank the team of Steep Theatre and *Mosquitoes* for

having her on this wonderful project! She is a proud recipient of the 2018 Bob Curry Fellowship and graduated from The Pennsylvania State University with a degree in Human Resources and Acting. Menaka studied theatre in London, and is a graduate of The Second City Conservatory and Comedy Studies Program, and the iO Improv Program. Past credits include Teatro Vista's *Romeo and Juliet* (Nurse), *'Night Mother* (Jessie Cates), *Uncle Vanya* (Yelena Andreyevna), *Dog Sees God* (Marcy). You can see her improvise with Stir Friday Night, and perform theatre, stand up, and sketch comedy around Chicago. Menaka is represented by Grossman & Jack Talent and would not be anywhere without God and her family's endless love and support. Instagram: MenakasDistressedGenes Twitter: HakunaMenakah



**Judi Schindler (U/S Karen)**

Judi is pleased to be part of this brilliant *Mosquitoes* production. Recent roles include Roberta in the widely acclaimed play *Admissions*

at Theater Wit and Dr. Toule in *Women of 4G* at Babes with Blades. Other favorite roles include Miriam Goldman in *Beau Jest*, Juanita Bartlett in *Sordid Lives*, and the drunk passenger in *Hellcab*. She also has understudied at such theaters as Steppenwolf, Northlight, Shattered Globe and Victory Gardens, where she went on as Hillary in *Hillary and Clinton*. In addition, Judi can also be seen in various local venues performing her one-woman show, *Husbands: An Owner's Manual*, based on 50+ years of marriage to Jack Schindler.



**Lisa Troi Thomas (U/S Gaviella / Journalist)**

Lisa Troi is very excited that this is her first show with Steep; but she is not a stranger to Steep as she is also the

House and Programming Manager as well as Access Coordinator. You may have seen her most recently in *The Fly Honey Show* at The Den Theatre or in *The Ridiculous Darkness* at Sideshow Theatre. Lisa is very thankful for Steep and how much they have let her spread her wings and flourish. She is represented by Big Mouth Talent.

# PRODUCTION STAFF

**Lucy Kirkwood (Playwright)** Lucy Kirkwood is an acclaimed playwright and screenwriter. In 2009, Lucy's play *It Felt Empty When the Heart Went at First but it is Alright Now* was produced by Clean Break Theatre Company at the Arcola Theatre. The play was nominated for an Evening Standard Award for Best Newcomer and made Lucy joint winner of the 2010 John Whiting Award. *NSFW* premiered at the Royal Court Theatre in 2012, starring Janie Dee and Julian Barratt. *Chimerica* premiered at the Almeida Theatre in 2013 and subsequently transferred to the West End, earning Best New Play at the 2014 Olivier and Evening Standard Awards, as well as the Critics Circle Award and the Susan Smith Blackburn Prize. Recent work includes *Mosquitoes* (presented by special arrangement with Manhattan Theatre Club), which opened at the National Theatre, London, in summer 2017; and *The Children*, which premiered at the Royal Court Theatre, London, in 2016. *The Children* opened on Broadway in December 2017. Lucy also writes for screen: She has written for *Skins* (Company Pictures); created and wrote *The Smoke* (Kudos/Sky 1); wrote and directed the short film *The Briny*; and is developing projects with Raw TV, Cowboy Films, Clio Barnard, and Lenny Abrahamson. Her new six-part season *Adult Material* (Tiger Aspect Productions) and the mini-series of her play *Chimerica* (Playground Productions) have both recently been greenlit.

**Jaclynn Jutting (Director)** Jaclynn Jutting is an award-winning freelance director, working out of Nashville and Chicago. Directing credits include the *The Wolves* (Actors Bridge Ensemble), *The Flick* and *The Whale* (Verge Theater), *A Midsummer Night's Dream* (Nashville Shakespeare Festival), *Sea Wall* (OZ Arts), *The Amish Project* (Actors Bridge Ensemble/BU), the Jeff-nominated production of *The Seagull* (Eclectic), *Love and Understanding* (Redtwist), and *Animals Out of Paper* (Next Up/Steppenwolf Garage). She is the former Associate Artistic Director of Vitalist Theatre and previous head of the BFA-Directing program and Assistant Professor at Belmont University in Nashville, TN. She is the recipient of the First Night Outstanding Award

for Direction in 2019 & 2018 for her direction of *The Wolves*, *The Flick*, and *The Amish Project*, which also received a KCACTF citation for Outstanding Direction. She is a teaching artist, who received her M.F.A. in Directing from Northwestern University.

**Lauren Lassus (Stage Manager)** Lauren is a proud Steep Ensemble Member. Recent Steep credits include: *Pomona*, *First Love is the Revolution*, and *Zürich*. Thanks to Jackie, the cast, and crew!

**Sotirios Livaditis (Scenic Designer)** Sotirios is excited to be making his Steep Theatre debut. Recent projects include *For Services Rendered*, *The Harvest* (Griffin Theatre), *Hans Christian Andersen*, *When She Had Wings* (Northwestern University), *Out of Love* (Interrobang Theatre Project) *Small World*, *Fun Harmless WarMachine* (The New Colony), *Language Rooms* (Broken Nose Theatre) *Hooded, or Being Black for Dummies* (First Floor Theatre), *The Light Fantastic*, *1980 or Why I'm Voting for John Anderson* (Jackalope Theatre). He was the associate scenic designer on *A Midsummer Night's Dream* (Chicago Shakespeare Theatre), *Djembe!* (Apollo Theatre) and *Madama Butterfly* (Irish National Opera) with Todd Rosenthal. MFA - Northwestern University. Please experience more of his work at [www.sotiriosdesigns.com](http://www.sotiriosdesigns.com)

**Brandon Wardell (Lighting Designer)** Brandon is a Lighting and Scenic Designer in Chicago, and an Artistic Associate at Steep. Recent designs include *Pomona*, *Linda*, *Birdland*, *Lela & Co.*, *Earthquakes in London*, and *Brilliant Adventures* with Steep; *The Curious Incident of the Dog in the Night-Time* at Steppenwolf; *A Number at Writers*; *The Father* with Remy Bumpgo; *In The Next Room* with TimeLine; *Men On Boats* at ATC; *For Services Rendered*, *Titanic*, *London Wall*, and *Men Should Weep* with Griffin; and *The Game of Love and Chance* at American Players. Brandon earned his MFA from Northwestern University and is Professor of Lighting Design at Northern Illinois University.

## PRODUCTION STAFF, continued

**Emily McConnell (Costume Designer)** Emily is proud to be returning to Steep as an Artistic Associate for *Mosquitoes*, having designed *Birdland*, *Wastwater*, *The Few*, *Luther*, *Lakeboat*, *Hollow Lands*, and *In Arabia....* In addition to being the Resident Costume Designer for Roosevelt University's Chicago College of the Performing Arts. She also freelances for such companies as Michigan Shakespeare Festival (*The Two Gentlemen of Verona*), The House (*Hatfield & McCoy* - Jeff-nominated), American Blues (*Side Man*), Lifeline (*3 Little Pigs*, *Monstrous Regiment*), Northlight (*Black Pearl Sings*), Oak Park Festival Theatre (*Fair Maid of the West*, *Amadeus*, and others), Artistic Home (*Interrogation*, *The American Plan*), Dog & Pony (*Roadkill Confidential*), Gift Theatre (*Suicide Incorporated*), Theatre Mir, American Theatre Company, Remy Bumppo, Griffin Theatre and About Face. She received her MFA in Costume and Set Design from Northwestern University, and is a proud member of United Scenic Artists Local 829.

**Kevin O'Donnell (Sound Designer & Composer)** Kevin is happy to be back at Steep, where he last worked on *Fallow*. In Chicago his work has been nominated for 20 Jeff Awards (receiving 8). He has worked with Steppenwolf, Chicago Shakespeare, Court, Northlight, TimeLine, Lookingglass, Chicago Children's Theatre, and The House (company member), amongst many others. Regional credits: Kansas City Rep, Berkeley Rep, Pasadena Playhouse, Olney Center, Seattle Rep. In New Orleans: Southern Rep, The Shakespeare Festival at Tulane, and Le Petite Theatre (2 Big Easy Award nominations). New York: St Anne's, 59E59, Cherry Lane, and the Signature Theatre. He is also a drummer.

**Russell Langdon (Props Designer)** Russell is a Lighting/Scenic/Props designer based in Chicago IL. Originally from Kansas City, Russell is a production designer and manager for large scale corporate theatre and events. Russell is excited to be working with the Steep Theatre for the first time.

**Stephan Mazurek (Projection Designer)** The Public Theater: *Mojada*. Goodman Theatre:



**A cozy gathering place for conversation and performance**

Enjoy cocktails and conversation before and after the show.  
Explore music, stories, poetry, and more from across Chicago on Sunday and  
Monday evenings at 7:30.

**schedule & info at [the-boxcar.com](http://the-boxcar.com)**

Programming at The Boxcar is supported by an Idea Lab Grant from the Arts Work Fund.

# Experience Chicago, your theatre town.

## AFFORDABLE



You can see a show at most Chicago theatres for \$30 or less (and some are free!).



## NEIGHBORLY

Theatres play an integral role in helping to make Chicago neighborhoods thrive.

## ABUNDANT



Chicago has more than 250 theatre companies, each with its own look and feel.



## RENOWNED

An unprecedented 5 Tony award-winning theatres and 150 world premieres.



SHARE YOUR CHICAGO THEATRE PLANS AND EXPERIENCES: [#chicagotheatre](https://twitter.com/chicagotheatre)



FIND A SHOW

**CHICAGOPLAYS.COM**

HALF-PRICE TICKETS

**HOTTIX.ORG**

### About the League of Chicago Theatres

*The League of Chicago Theatres is an alliance of theatres which leverages its collective strength to support, promote, and advocate for Chicago's theatre industry locally, nationally, and internationally. The League is proud to serve a membership of more than 240 theatres, a rich and varied theatre community ranging from storefront theatres with budgets under \$10,000 to major cultural centers.*

## PRODUCTION STAFF, continued

*Lady in Denmark.* Victory Gardens Theatre: *Lettie, Indecent.* Steppenwolf Theatre: *The Fundamentals, Russian Transport, The Wheel, Tempest, Sonja Flew, The Cherry Orchard, Of Mice and Men.* Northlight Theater: *Faceless, Discord, Funnyman, Shining Lives, Better Late and Three Women Talking.* St. Louis Repertory Theatre: *Faceless.* Second City Theatricals at the Montreal Just for Laugh's Comedy Festival: *Reverie: Simply Unspeakable.* Galway Arts Festival: *Better Late.*  
www.stephanmazurek.com.

### **Almanya Narula (Violence Choreographer)**

Almanya is a Jeff Nominated fight choreographer, actor, writer, and director. She recently received her M.A in New Arts Journalism from The Art Institute of Chicago. She is the founder/editor-in-chief of *Chicago Theatre Now* - a print publication featuring opinion articles from industry members discussion principles of diversity, equity, and inclusion in the rehearsal space. She is also the co-founder of Sizzling

Swashbuckling Sisters - a burlesque sword fighting act, created with the hopes of empowering women and countering the lack of fem representation within the combat world.

**Cate Gillespie (Dialect Coach)** Cate has a Music Theatre degree from Oakland University in Rochester, Michigan. She has worked on accents and dialects in recent productions with City Lit Theater, Haven Theatre, Red Theatre Chicago, Vitalist Theatre, Promethean Theatre Ensemble and Citadel Theatre. As a teaching artist, she has taught at Columbia College Chicago, Oakland University's Music Prep Division, Evanston's Young Artists Program, The Viola Project and more. She also works in nonprofit fundraising, and holds a certificate in grant writing from DePaul University. Much love to Russell, Quinn and wee Jamie.

**Emily Antoff (Assistant Director)** Emily is thrilled to be working with Steep Theatre for the first time. Previous directing projects include

**Prairie Home Builders**  
New and renovated homes in Chicago

773-502-6383  
prairiehomebuilders.com



Shown Above: Renovation of a Gold Coast townhouse - Chicago, IL



## PRODUCTION STAFF, continued

After (Barrens Theatre), *Paragon Festival* (Otherworld Theatre Company), *Headline Theater Project*, *Face Value* (Chicago Theatre Marathon), *La Maestra* (Chicago Danztheatre Ensemble), assisting Steve Scott for *The Little Flower of East Orange* (Eclipse), and Liz Carlin Metz for *Multitudes* and *Merchant on Venice* (Vitalist/Rasaka). Originally from Minnesota, Emily holds a BA in theatre from Knox College, and has also studied theatre with the Eugene O'Neill National Theatre Institute and Complicite.

**Lila Gilbert (Production Manager)** Lila is a Chicago-based freelance production manager excited to make her Steep debut! She holds a BFA in Theatre Technology from The Theatre School at DePaul University and serves proudly as the General Manager for Cloudgate Theatre and as an ensemble member with The New Colony. She is also a Labor Coordinator with PRG North America. Recent production management credits include *Strange Heart Beating* (Cloudgate Theatre), *Small World* (The New Colony), and *Second Skin* (WildClaw Theatre). In her spare time, she advocates for mental health education and suicide prevention, practices yoga, and admires local birds. See more at [lilagilbert.com](http://lilagilbert.com).

**Isaac Jay Pineda (Assistant Stage Manager)** Isaac is a Chicano theatre artist, hailing from Southern California. He is a recent Columbia graduate where he studied Costume design and Stage Management. Some favorite credits include, *Four Places* (The Den), *Marcus and the Secret of Sweet* (Columbia Chicago) and *Orlando* (Columbia Chicago).

# Being there is why I'm here.



Total average  
savings of  
**\$827\***

when you  
combine  
home and auto.

Call my  
office for a  
quote 24/7.

**David Frederickson Agcy Inc**  
Dave Frederickson, Agent  
6255 N Clark Street  
[www.davidfred.com](http://www.davidfred.com)  
Bus: 773-761-4242

 **State Farm®**

\*Average annual per household savings based on a 2016 national survey of new policyholders who reported savings by switching to State Farm.

State Farm Mutual Automobile Insurance Company, State Farm Indemnity Company, State Farm Fire and Casualty Company, State Farm General Insurance Company, Bloomington, IL  
PO97186.1

# STEEPING AROUND TOWN

*Steep's ensemble is busy making theatre around Chicago and across the country.*

**Jonathan Berry** is directing *Lindiwe* at Steppenwolf running November 7 through January 5.

**George Cederquist** is the Artistic Director at Chicago Fringe Opera, where he directs Tom Waits' alt-chamber opera adaptation of Georg Büchner's play *Woyzeck* in November. He continues to host *Opera Box Score*, America's Talk Radio Show About Opera, on Monday nights on WNUR 89.3 FM.

**Alex Gillmor** can be seen outside of Steep for the first time in many years in Rivendell

Theatre's production of *Laura and the Sea* running October 25 through December 8.

**Ashleigh LaThrop** will appear in Gillian Flynn's new Amazon show *Utopia*.

**Caroline Neff** will appear in *Linda Vista* at 2nd Stage on Broadway through November 10 followed by *Dance Nation* at Steppenwolf In December.

**Brandon Rivera** can be heard wherever podcasts are available in *Brava*, an audio drama produced by Make-Believe Association.

**Peter Moore** will be appearing on *Chicago P.D.* this Fall.

**Joanie Schultz** is directing *A Small Fire*, which she originally directed at Steep Theatre in 2014, at Philadelphia Theatre Company with Bebe Neuwirth in the lead role.

**Brandon Wardell** is designing lights for *Midsummer* at the Greenhouse, directed by Randy White and *Rutherford and Sons* at TimeLine, directed by Mechelle Moe.



FOUNDRY ART  
FINE BRONZE TILES  
FOR WALL AND FLOOR

From Lowitz & Company  
Exclusively at  
[claremonttile.com](http://claremonttile.com)

 CLAREMONT TILE



NEW LOCATION



773-769-4900

5350 N Broadway • Chicago, IL  
[www.PizzeriaAroma.com](http://www.PizzeriaAroma.com)

**Stop in for Dinner  
before the SHOW...  
or Drinks afterward!**



FULL  
BAR



FULL  
SERVICE



SEATS  
65



Three  
TVs



**Completely Renovated • Daily Food & Drink Specials**

**FREE Next Door @ BY** Byline Bank

Mon-Fri: After 6pm • Saturday: After 1pm • Sundays: ALL DAY

## SPECIAL THANKS

Jason Akemann  
Charlotte Berry  
The Blackstone Hotel  
Mary Brennan  
Ally Brisbin  
Broadway in Chicago  
Amber Calderon  
Deb Clapp  
Columbia College  
Chicago  
Kimberly Corrigan  
Erica Daniels

Diane & Ian Galleher  
Elaine Glusac  
Jerry Goodman  
Jane Hollinger  
The House Theatre  
Kosmo Music  
Deirdre Kinahan  
Kurt Kolar  
Eileen LaCario  
Dan Luna  
Leo Mendoza  
Liz McGarry

Elisa Miller  
Lee Miller  
Gabe Morrison  
Alderman Harry  
Osterman  
Kelly Parker  
John Paulun  
David Raino-Ogden  
David Reed  
Jeff Riemer  
Beth Rohlmeier  
Meaghan Schneider

Gary Segal  
Timothy Sherck  
Adrienne Smith  
The School at  
Steppenwolf  
Alderman Mary Ann  
Smith  
Patrick Shanahan  
Ben Thielm  
Bart Vivian  
Jack Wallace  
Ernst Walter

## ACCESSIBLE PERFORMANCES

Audio Description and Open Captioning were made possible by the Chicago Cultural Accessibility Loan Program, which is administered by Steppenwolf Theatre Company with major funding provided by the Michael and Mona Heath Fund.

**Audio Description: Saturday, October 19, 8:00pm**

**Open Captioning: Saturday, October 26, 8:00pm & Sunday, October 27, 3:00pm**

For more information, please contact us at [access@steeptheatre.com](mailto:access@steeptheatre.com) or 773-649-3186.



## Care for Real

Care for Real is a 501(c)(3) not-for-profit serving the Greater Edgewater community. We provide free programs and services to more than 78,000 annually, including:

- on-site food distribution five times a week
- deliveries to the homebound and a clothing closet
- a pet pantry and case management referrals
- and an Employment Resource Center to help our clients self-stabilize

Contributions are essential to maintaining our operations. Please consider supporting Care for Real by making a donation today!

5341 N Sheridan Rd, Chicago IL 60640 | 773.769.6182 | [www.careforreal.org](http://www.careforreal.org)

# DONORS

Steep Theatre is profoundly grateful to the following supporters for their generous contributions.  
This list reflects gifts received between September 15, 2018 and September 14, 2019.

## Season Sponsor

The Bayless Family  
Foundation

## Production Sponsors

Susan Burland &  
George Plumb  
Ken Burlington  
Colleen & John Mueller  
Jan Willer &  
Mark Osing

## Access Ticket Fund Sponsors

Ann & Rich Carr  
Joseph Zambrano

## Steep Producers (\$5,000 and up)

The Alphawood  
Foundation  
Arts Work Fund for  
Organizational  
Development  
Julie & Roger Baskes  
The Bayless Family  
Foundation  
Susan Burland &  
George Plumb  
Ken Burlington  
Ann & Rich Carr  
The City of Chicago  
Department of  
Cultural Affairs &  
Special Events  
The Robert D. Collins  
Fund  
The Gaylord &  
Dorothy Donnelley  
Foundation  
The MacArthur Fund  
for Arts and Culture  
at the Richard  
H. Driehaus  
Foundation  
The Illinois Arts Council  
Agency  
Ted Lowitz  
A.L. and Jennie L. Luria  
Foundation  
The Saints

## Steep Benefactors (\$1,000 to \$4,999)

The ADJLM Foundation  
Stacy Bosma &  
James Allen  
Holly & David Collins

Patricia Cox  
Kassie Davis &  
Bruce Beatus  
Lisa Donovan &  
Bradford Smith  
Kelly Fitzgerald &  
Chad Newman  
Denise Hazaga &  
Lisa Vandermark  
Leigh & John  
Hourihane  
Stu Kiesow  
Sara & Adam Levy  
Shana Lowitz &  
William Swaim, M.D.  
Timothy Lyman  
The PAV Fund of  
the John D.  
and Catherine  
T. MacArthur  
Foundation  
Cooper Melgreen  
Anne & Richard Moore  
Jen & Peter Moore  
Margaret & Peter  
Morris  
Colleen & John Mueller  
The Jordan & Jean  
Nerenberg Family  
Fund  
New Suit Theatre  
James T. O'Neill  
Anne Puotinen  
The Pauls Foundation  
The Rothman Family  
Foundation  
Jessica & Christoph  
Schrey  
Karen Shankman &  
James Fruehling  
Timothy Sherck  
Sylvia & Joseph Stone  
Anna Wermuth &  
Alex Gillmor  
Lisa & Randy White  
Dr. Jan Willer &  
Mark Osing  
Martha Anne &  
Stephen Yandle

## Steep Patrons (\$500 to \$999)

Anonymous  
Marlys Akin  
David Bock  
Reid & Jennifer Quinn  
Broda

Diane & Ian Galleher  
Deborah Garber &  
John Tielsch  
Gregg Gilman  
Elaine Glusac &  
Dave Bartusek  
Mary & Charlie Gofen  
Carol & Alan Greene  
Steven A. Grossman &  
Rachel Perlman  
John Hahm  
Dorothy Harza  
Carolyn & Gordon Kirk  
Kerry & Kenny Lassus  
Fran & Chuck Licht  
Susie & Tom MacLean  
Susan & Alvin Marr  
Anne Marie  
Dumas Mitchell  
Elizabeth Moore  
Kate L. Moore  
Amanda & Doug  
Passmore  
Kaye & Bob Passmore  
Susan A. Payne  
Pepsico Foundation  
Becky & David Perry  
Barbara & Robert  
Richards  
Karen & Frank  
Schneider  
Dr. Michael Schnur &  
Dr. Jack Bulmash  
Hope & Jeff Sheffield  
Bill & Cathy Siple  
Susie Stephenson  
Barbara & Randy  
Thomas  
Ann & Richard  
Tomlinson  
Laura & Robert Watson  
Kate Welborn &  
Ann McGill  
Joseph Zambrano

## Steep Contributors (\$250 to \$499)

Anonymous  
AbbVie  
Ann Marie &  
Joseph Arden  
Jennifer Beachell  
Kay Berkson &  
Sidney Hollander  
Meg & Matt Breslin  
John Bistolfo  
Karen A. Callaway

Lawrence DelPilar  
Suzanne Deveney &  
Bob Isaac  
Vincent DiFruscio &  
Neil Averick  
Alice & Ed Dubose  
Suzanne Elkins Rose  
Sallie Gaines &  
Mark Richardson  
Michael Glusac  
Vicky Gordon &  
Donald Martin  
Joe Hartness &  
Troy Baresel  
Phyllis Hill  
Nancy & John  
Hoffmann  
The Illinois Tool Works  
Foundation  
Cynthia Kirk  
Gregory Lewis &  
Mary Strek  
H. B. Lottero  
Ricki & Joshua Lowitz  
Jim McDermott  
Lani Mesa Ellis  
David E. Miller  
Andrea F. Mitchel  
Frank Newell  
Lyle Pepin &  
David Dzurinda  
Melissa & Jeff Riemer  
Dr. Edward O. Riley  
Eugene Rinaldi  
Dawn & Larry Roberts  
Sheila G. Rock  
Judy & Bernie  
Rosenstein  
Hunter Sanders &  
Jason Proper  
Nancy Schaefer  
Holly & Tony Storck  
Pooja & Peter  
Vukosavich  
Lisa Wainwright &  
Bruce Doblin  
Victoria & Sean Wiedel  
Mark Woodward

## Steep Circle (up to \$249)

Anonymous  
Christina Adachi  
Aurora Adachi-Winter  
Rita & Lloyd Allison  
Bank of America  
Aon Foundation

## DONORS, continued

Sarah-Jayne Ashenhurst	Dell Lisa Disch	Janice A. Holling Mary Alice Hope	Barbara McCaffrey Kristina McCloskey
Peggy Bagley & Rabbi Douglas Goldhamer	Joseph Dombrowski Jacob Drummond	Holly E. Humphreys Amy Jacob	Gretchen McGinn Kelsey McGrath
Larry Baldacci & Ray Cunha	Ronald Duda Matthieu Dupas	Donna Jaggard Tamara & Neil Jain	Kate McGregor Mary & Harris McKee
Grace Balogun	Sylvia Dybiec & Mike Bayard	Stasha Jain Klara Jarolimova	Geoffrey Meyer Ingrid Michaels
Rollie Batten Tiana Benway	Kenneth East & Timothy Thurlow	Eric Johanson & John Potter	Nicholas Miliotis Vivian Mitchel
Deanna Berman Dennis Bierlein	Phil Eckert & Pat Dean	Gary Johnson Molly Moore Johnson	Lori Montana Emily Moore
Bindy Bitterman Cathy & Trip Blair, in honor of Kelly Fitzgerald	Ruthann & Richard Edwards	Edye Kamensky Jared Kaplan	Joseph Moore Corinne Mucha
Joan & Hank Bliss Carol Borden & Joel Shapiro	Keely Ellingson Kristina Entner	Paul Kaufmann Pam Kaul & Andy Berman	Susan & Patrick Nash Raymond Nicholas Susan Noel
Claire Bowers Michael Boyd Charles Brookover	Jennifer & Craig Erdmann	Charlotte & David Kempner	Michael O'Connell Marie O'Connor
Corinne Brophy Caroline & Dean Browell	Edith I. Farrar Steve & Sharon Fiffer	The Kenney Family Chris Khoshaba	Joshua Odor Lori Offergeld
Lee Brozen Alison Bruegger Arch Bryant	Michael Fitzgerald, in honor of Kelly Fitzgerald	Thad King Ralla Klepak	Gay Byrne Olk Maria Palermo
Janet Burroway Patricia Butkus Lenore & Dale Caldwell	Virginia Fitzgerald Arthur Flannery	Julie Koerner Jean Marie & Robert Koon	Hallie Palladino Alice Perlin & Ray Bacon
Jorge L. Camacho Bruce Caris CDW	Michael Foltz Shirley Foster	Eugene Koprowski Ryan Kordana	Lauralyn Persson Rachel Perzynski
Jack Cederquist & Meg Kennedy Shaw	Thomas Gibson Ethel & Bill Gofen	Peg & David Kritzler Mary & Christopher Krueger	Jane Peterson Anne Phillips
Jacqueline Chang-Stroman	Jane & Leon Goldfayn Nancy & Bob Goldin	Nada Kuzmanovic Eli Lampson	Margaret Piatt & Jim White
Louis Chieng Stephanie Chu	Leonard Goodman Sally & Ralph Goren	Craig Langman Rosalie & David Lauerman	Kate Piatt-Eckert & Tony St. Clair
Chubb Charitable Foundation	Valerie Gorman Prudy & Jacques Gourguechon	Morgan Lavenstein Gerald Lee	Pizzeria Aroma Angela & Charles Platt
Johnny Clark Fay Clayton & Lowell Sachnoff	Deborah Granite Cathie Gray	Sandy & John Lemming	Dan Polsby Jennifer Pope
Heather Colburn & Steve Kane	Cari & Tom Greene Cindy & Mark Greenwood	Joyce & Jules Lerner Laurel Lipkin & Mark Neil	Jerry Proffit Anton Pujol
Newton Cole Frederica & Andrew Conroy	Glenn Grzonka Xiyu Guan	Daniel Lunney & Marco Espinoza	Mario Ragazzzone Ian Randall
Ann & Russ Covode	Jeff Hackett Marilyn Heckmyer & Gerald Landy	Marilyn Lucas Joshua Lombantoruan	Elizabeth Raymond & Paul Hybel
Stephany Creamer Janet Creevy Avery	Simon Hedger Quinn Hegarty	Daniel Lunney & Marco Espinoza	Marilyn Reid Deirdre Rice
Adam Cullin James K. Cunningham	Heidi Henning Stephanie Hernandez	Matthew Lunt John Maher	Courtney Rioux Mary Sue & Clark Robson
Andrew de Funiak Sonya Dekhtyar	Sandra Hewlett Donna Higgins	Nancy Malitz & Lawrence B. Johnson	Matt Rosin Brenda Rossini
	James & Lois Hobart Eric Hogberg	Gregory Mancuso & Laurie Breitkopf	Peggy Rubens Yulia Rud
	Robert Holliday	Robert Mattaliano Deborah McBride	Juan Ruiz Oliver Sava Chad Schmerling



## DONORS, continued

Jill & Paul  
Schoenwetter  
Sarah Schol  
David Schousboe  
James Schulman  
Hugh & Melissa  
Schulze  
Sharon Seeder  
Susan Ringel Segal &  
Gary Segal  
Laurie Shaman &  
Ed Hinkley  
Louise Sharrow  
Peggy & Don Shearn  
Becca Sheehan

Norm Sloan  
Ruth Smerling  
Toni Smith  
Jackie Snuttjer  
Mary Solt  
Kevin Sparrow  
Charles & Barbara  
Spaulding  
Gail & Bob Spiel  
Ryan Stanfield  
James Stimac  
Joshua Straus  
Jim Swanson  
Linda Swift  
Alexander Timberg

Dave Toropov  
Martha Trueheart  
Svetlana Tsipursky  
William Udovich  
Elizabeth Verzo  
Lana & Roy Voigt  
Mitzi Walchak  
Paul Waterhouse  
Shontavia Weatherly  
Lorrayne Weiss  
Mary Wermuth, in  
honor of Alex Gillmor  
Catherine Wertjes  
Kyle Whalen  
Lauren Emily Whalen

Barbara Whitney  
Megan Wildebour  
Katherine Willhoite &  
Rodd Zolkos  
Robin Witt, in memory  
of Howard Witt  
Tom Wojcik  
Anne Wridler  
James Young  
Loretta Yurek  
Roberta Zabel  
Brian Zias  
Charlotte Ziporyn

## REWIRED

1107 W Berwyn Ave

Three doors east  
of Steep Theatre

M-F 6am-7pm  
S-S 7am-7pm

Enjoy 15% off  
when you present  
this program at  
Rewired Cafe.



# STEEP'S SEASON 19 MEMBERS

*This list reflects Season 19 Members as of September 14, 2019.*

Julie & Roger Baskes  
Andrea Biel-Cohen  
John Bistolfo  
David Bock  
Susan Burland &  
George Plumb  
Ken Burlington  
Ann & Rich Carr  
Kassie Davis &  
Bruce Beatus  
Vincent DiFruscio &  
Neil Averick

Lisa Donovan  
Suzanne Elkins Rose  
Kelly Fitzgerald &  
Chad Newman  
Gregg Gilman  
John Hahm  
Denise Hazaga &  
Lisa Vandermark  
Stu Kiesow  
Thad King  
Gregory Lewis &  
Mary Strek

Ted Lowitz  
Jim McDermott  
Elizabeth Moore  
Margaret & Peter  
Morris  
Colleen & John Mueller  
James T. O'Neill  
Susan A. Payne  
Becky & David Perry  
Sheila G. Rock  
Karen & Frank  
Schneider

Jessica & Chistoph  
Schrey  
Hope & Jeff Sheffield  
Timothy Sherck  
Susie Stephenson  
Laura & Robert Watson  
Lisa & Randy White

To join this exceptional group or to learn more about becoming a member of Steep Theatre, inquire at the box office, visit [steeptheatre.com](http://steeptheatre.com), or call us at 773-649-3186.



## Amanda Passmore

Amanda has lived in Chicago for over 15 years. The purchase and renovation of her home in Edgewater inspired her to make a career change and become an @properties agent.

**(608) 345-4436**

[amandapassmore@atproperties.com](mailto:amandapassmore@atproperties.com)

## Take the drama out of home buying & selling

### Why work with Amanda?

- ◆ 12 years of experience in commercial real estate and extensive knowledge of valuing and comparing various investment options
- ◆ CPA license means she is practical, thorough, and can help clients understand financial implications of home buying or selling
- ◆ Experienced in small- and large-scale renovations and remodels to help buyers and sellers unlock value
- ◆ Skilled in home design and staging to prepare a home for sale and maximize price



Contact Amanda for an enjoyable and successful buying and selling experience.

# IN-HOUSE FULL COLOR DIGITAL OFFSET PRESS!



**ON-DEMAND DIGITAL PRINTING**  
**IN-HOUSE DIGITAL OFFSET PRESS**  
**GRAPHIC DESIGN**  
**VARIABLE DATA SOLUTIONS**  
**LARGE FORMAT SIGNAGE**  
**MONTHLY MAGAZINES**  
**NEWSLETTERS / BOOKLETS**  
**RESTAURANT MENUS**  
**MAILING SERVICES**  
**SPECIALIZED FINISHING**

- Serving Edgewater, Chicagoland and all Suburbs for over 20 years,
- ALLIED PRINT AND COPY offerings have improved, as if that were even possible! Our new state of the art digital equipment will allow us to serve you better than ever with even faster, higher quality reproduction services! And of course we still offer the best in single color to full color Offset Printing! Let our design department dazzle you with eye catching graphics, clean professional design and the knowledge to help you complete your ideas to create the desired effect to get your company or personal project recognized! This is just a few of the services ALLIED PRINT & COPY can provide, so call us or stop in TODAY!

**QUICK TURNAROUND!**  
**SAME DAY SERVICES**  
**AVAILABLE!**

**NOW OFFERING!**  
**Full Color Envelope Printing**



**allied print & copy**

DESIGN | PRINT | SIGN

**FREE  
PICK-UP  
& DELIVERY**

**5640 N. BROADWAY  
CHICAGO, ILLINOIS 60660.**

**LET US  
QUOTE  
YOUR NEXT  
JOB**

**Call: 773.334.5200 / 773.334.5488**

**Fax: 773.334.5757 • [info@alliedprintandcopy.com](mailto:info@alliedprintandcopy.com)**

**[www.alliedprintandcopy.com](http://www.alliedprintandcopy.com)**

**Hours: Monday - Friday: 9:00 am - 5:00 pm**

**Saturday: 10:00 am - 4:00 pm**





**Steep Theatre Company** is a dedicated, close-knit group of forty-one actors, directors, designers, and writers driven by a shared commitment to the organization's mission: *To bring out the everyday truths in the stories we tell through ensemble work and to reach out to non-traditional theatergoers by seeking out stories and creating experiences relevant to them.*

We believe theatre should stoke conversations about the issues and conditions that are a part of all of our lives; conversations that take place among artists and audiences in the theatre, in the lobby, and long after everyone has gone home. Steep's goal is to inspire and add voices to these conversations. We strive to reach people who may have abandoned theater as a relevant art form by telling stories that touch their lives in real and palpable ways and by creating an environment that is welcoming to everyone.

## PRODUCTIONS

*Pomona* by Alistair McDowall . . . . . July 2019  
*First Love is the Revolution*  
 by Rita Kalnejais. . . . . April 2019  
*Red Rex\** by Ike Holter . . . . . Jan 2019  
*Zürich* by Amelia Roper. . . . . Oct 2018  
*Linda* by Penelope Skinner. . . . . July 2018  
*Birdland* by Simon Stephens . . . . . April 2018  
*Hinter\** by Calamity West . . . . . Jan 2018  
*The Invisible Hand* by Ayad Akhtar. . . Oct 2017  
*Lela & Co.* by Cordelia Lynn . . . . . July 2017  
*Hookman* by Lauren Yee. . . . . April 2017  
*Earthquakes in London*  
 by Mike Bartlett . . . . . Jan 2017  
*Bobbie Clearly\** by Alex Lubischer. . . Sept 2016  
*Wastwater* by Simon Stephens . . . . . July 2016  
*The Few* by Samuel D. Hunter . . . . . April 2016  
*Posh* by Laura Wade. . . . . Jan 2016  
*The Cheats\** by Hamish Linklater . . . Oct 2015  
*Brilliant Adventures*  
 by Alistair McDowall . . . . . July 2015  
*Martyr* by Marius von Mayenburg . . . April 2015  
*The Life and Sort of Death of Eric Argyle*  
 by Ross Dungan . . . . . Jan 2015  
*The Vandal* by Hamish Linklater. . . . . Oct 2014  
*A Small Fire* by Adam Bock. . . . . July 2014  
*If There Is I Haven't Found It Yet*  
 by Nick Payne . . . . . May 2014  
*strangers, babies* by Linda McLean. . . Jan 2014  
*Motortown* by Simon Stephens . . . . . Sept 2013  
*Fallow* by Kenneth Lin. . . . . July 2013  
*The Knowledge* by John Donnelly . . . April 2013  
*Luther* by Ethan Lipton . . . . . Jan 2013  
*Making Noise Quietly*  
 by Robert Holman . . . . . Oct 2012  
*Moment* by Dierdre Kinahan . . . . . July 2012  
*The Receptionist* by Adam Bock. . . . . April 2012  
*Love and Money* by Dennis Kelly . . . . Jan 2012  
*Under the Blue Sky*  
 by David Eldridge . . . . . Oct 2011  
*Pornography* by Simon Stephens. . . . . July 2011  
*Festen* by David Eldridge, Thomas Vinterberg,  
 Morgan Rukov, Bo Hr. Hansen . . . May 2011  
*Lakeboat* by David Mamet . . . . . Jan 2011  
*A Brief History of Helen of Troy*  
 by Mark Shultz . . . . . Sept 2010  
*2,000 Feet Away* by Anthony Weigh. . . May 2010

*Harper Regan* by Simon Stephens. . . Jan 2010  
*Kill the Old Torture Their Young*  
 by David Harrower . . . . . Oct 2009  
*The Hollow Lands* by Howard Korder June 2009  
*Parlour Song* by Jez Butterworth . . March 2009  
*In Arabia We'd All Be Kings*  
 by Stephen Adly Guirgis . . . . . Jan 2009  
*Seven Days\** by Egan Reich. . . . . Oct 2008  
*Greensboro: A Requiem*  
 by Emily Mann . . . . . May 2008  
*Breathing Corpses* by Laura Wade . . Feb 2008  
*Coronado* by Dennis Lehane . . . . . Sept 2007  
*Insignificance* by Terry Johnson . . . . July 2007  
*The Resistible Rise of Arturo Ui*  
 by Bertolt Brecht . . . . . May 2007  
*Otherwise Engaged* by Simon Gray . . Feb 2007  
*The Last Days of Judas Iscariot*  
 by Stephen Adly Guirgis . . . . . Sept 2006  
*Bang the Drum Slowly* by Mark Harris,  
 adapted by Eric Simonson. . . . . June 2006  
*Of Mice and Men*  
 by John Steinbeck . . . . . March 2006  
*The Night Heron*  
 by Jez Butterworth . . . . . March 2006  
*Catch-22* by Joseph Heller . . . . . Oct 2005  
*Book of Days* by Lanford Wilson. . . . June 2005  
*Incident at Vichy* by Arthur Miller. . . March 2005  
*Howie the Rookie* by Mark O'Rowe . . . Oct 2004  
*Dealer's Choice* by Patrick Marber . . . Aug 2004  
*The Time Trial* by Jack Gilhooley. . . . May 2004  
*The Hothouse* by Harold Pinter . . . . . Aug 2003  
*Below the Belt* by Richard Dresser . . . Aug 2003  
*My Donkey Lady* by John Wilson . . . . Aug 2003  
*The Job* by Shem Bitterman . . . . . May 2003  
*The Aspidistra Code*  
 by Mark O'Rowe . . . . . Oct 2002  
*Geography of a Horse Dreamer*  
 by Sam Shepard . . . . . June 2002  
*These Flowers are for My Mother\**  
 by Michael McGuire . . . . . March 2002  
*Pvt. Wars* by James McLure . . . . . Sept 2001  
*Search and Destroy*  
 by Howard Korder. . . . . Aug 2001  
*Life During Wartime*  
 by Keith Reddin . . . . . March 2001

\* World Premiere

# THE STEEP PASS



**For only \$100, a Steep Pass gets you:**

- a reserved seat at each of Steep's next 4 plays - that's a 40% savings on a year's worth of theatre,
- discounted tickets for your friends,
- a standing invitation to Steep's famous post-show parties.

Plus, the Steep Pass is super flexible - changing your dates is always free and easy.

Ask about the Steep Pass at the box office or check it out online at [steeptheatre.com/pass](http://steeptheatre.com/pass).

## UP NEXT AT STEEP...

### *The Leopard Play, or sad songs for lost boys*

A World Premiere by Isaac Gomez

Directed by Laura Alcalá Baker

January 24 - February 29, 2020

All families have secrets, but some live in an underbelly too dark to even whisper about. After ten years of walking away, Son returns to his home along the U.S./Mexican border searching for answers about his uncle's mysterious death, but what he finds there are the men he tried to escape and the memories he thought he left behind. *The Leopard Play or, sad songs for lost boys* is an excavation of truth amidst lies, intimacy amidst violence, and a reckoning of learning how to love the very thing you hate the most.