

Steep Theatre Presents the Midwest Premiere of

# Paris

BY EBONI BOOTH DIRECTED BY JONATHAN BERRY



# STEEP THEATRE COMPANY

Steep Theatre Company is an ensemble of artists driven by a shared commitment to the organization's mission: *To bring out the everyday truths in the stories we tell through ensemble work and to reach out to non-traditional theatregoers by seeking out stories and creating experiences relevant to them.* Steep believes theatre should stoke conversations about the issues and conditions that are part of all of our lives; conversations that take place between artists and audiences in the theatre, in the lobby, and long after everyone has gone home.

---

## ENSEMBLE MEMBERS

Laura Alcalá Baker	Thomas Dixon	Emily McConnell	Joe Schermoly
Catherine Allen	Patricia Donegan	Peter Moore	Joanie Schultz
James Allen	Pete Dully	Caroline Neff	Julia Siple
Debo Balogun	Jonathan Edwards	Jim Poole	Sasha Smith
Jonathan Berry	Nate Faust	Jon Ravenscroft	Dan Stratton
Lucy Carapetyan	Alex Gillmor	Egan Reich	Kendra Thulin
Chris Chmelik	Nick Horst	Joel Reitsma	Brandon Wardell
George Cederquist	Destini Huston	Melissa Riemer	Chelsea M. Warren
Matt Chapman	Lauren Lassus	Brandon Rivera	Robin Witt
Brad DeFabo Akin	Kristin Leahey	Omer Abbas Salem	Brendan Melanson
Maria DeFabo Akin	Cindy Marker	Amber Sallis	<i>in memoriam</i>

---

## ARTISTIC ASSOCIATES

Alison Siple	Simon Stephens <i>Assoc. Playwright</i>	Ellen Willett
--------------	--	---------------

---

## BOARD OF DIRECTORS

Cooper Melgreen <i>President</i>	David Bock <i>Treasurer</i>	Anne Puotinen <i>Secretary</i>
Dave Bartusek	Stu Kiesow	Anne Marie Mitchell
Kelly Carpenter	Ted Lowitz	Doug Passmore
Sonya Dekhtyar	Cooper Melgreen	Jessica Schrey

---

## STAFF

Peter Moore <i>Artistic Director</i>	Lisa Troi Thomas <i>Audience &amp; Artist Experience Manager</i>	Danie Anderson <i>Marketing &amp; Communications Manager</i>	Stu Kiesow <i>Graphic Designer</i>
Kate Piatt-Eckert <i>Executive Director</i>			

---

## SUPPORT



MacArthur  
Foundation



PAUL M. ANGELL  
FAMILY FOUNDATION

CHICAGO DEPARTMENT OF  
**DCASE**  
CULTURAL AFFAIRS & SPECIAL EVENTS



NATIONAL  
ENDOWMENT **for the ARTS**  
arts.gov



GAYLORD & DOROTHY  
DONNELLY FOUNDATION

---

## PRODUCTION HISTORY



Visit [steeptheatre.com/production-history](http://steeptheatre.com/production-history)

---

## MAKE A GIFT



Help Steep create more theatre like *Paris*. Scan to donate, or inquire at the box office.

---

## STEEP THEATRE COMPANY

1044 West Berwyn, Chicago, IL 60640 | PO Box 607415, Chicago, IL 60660  
[www.steeptheatre.com](http://www.steeptheatre.com) · [info@steeptheatre.com](mailto:info@steeptheatre.com) · (773) 649-3186



# Steep Theatre Company

proudly presents the Midwest Premiere of

# Paris

by Eboni Booth

CAST (in speaking order)

Berry's Orientation Video Voice	Norm Woodel
Emmie	Amber Sallis^*
Gar	Terence Sims
Logan	Alex Levy
Maxine	Michaela Petro
Wendy	Lynda Shadrake
Dev	Alex Gillmor^
Carlisle	Josh Odor

## UNDERSTUDIES

Emmie	Kaylah Crosby
Gar	Jon Jordan
Logan	Isaac Snyder
Maxine	Liz Sharpe
Wendy	Anne Wrider
Dev / Carlisle	Daniel Houle

## PRODUCTION STAFF

Director	Jonathan Berry^
Stage Manager	Jennifer Aparicio*
Lighting Designers	Heather Gilbert^ & Conchita Avitia
Costume Designer	Alexia Rutherford
Sound Designer	Daniel Etti-Williams
Props Designer	Carol-Delaney Gibson
Scenic Consultant	Eleanor Kahn
Intimacy Choreographer	Tristin Hall
Assistant Director	Lisa Troi Thomas
Production Manager	Julia Siple^
Technical Director	Evan Sposato
Production Electrician	Mark Brown
Makeup Assistant	Liz Sharpe
Casting Director	Lucy Carapetyan^
Photographer	Randall Starr

^Steep Theatre Ensemble Member ^Member of United Scenic Artists Local 829

\*Appearing through an Agreement between Steep Theatre and Actors' Equity Association, the Union of Professional Actors and Stage Managers in the United States.

 The Director is a member of the STAGE DIRECTORS AND CHOREOGRAPHERS SOCIETY, a national theatrical labor union.

Paris is presented by arrangement with Concord Theatricals on behalf of Samuel French, Inc. [www.concordtheatricals.com](http://www.concordtheatricals.com). World Premiere Presented by Atlantic Theatre Company, New York City, 2020.



The video and audio recording of this show is strictly prohibited. You may take photos of the stage before or after the show, but not when actors are present. If you post these photos online or elsewhere, please credit the production's designers listed above.

Season Sponsor: **Bayless Family Foundation**

This production of *Paris* was sponsored by: **Dr. Susan Burland & George Plumb, Ken Burlington, James T. O'Neill, Barbara & Randy Thomas, Lisa & Randy White, Jan Willer & Mark Osing, and Martha Anne & Stephen Yandle**

# DIRECTOR'S NOTE

"I wait for myself."

- Frantz Fanon, "The Fact of Blackness"

In the last two years, I think we all have been wrestling with two challenging and important questions: first, what makes up our identity – is it the work we do? The people we surround ourselves with? Our behavior in the past? Or our actions in the present? And second, our idea and definition of home: is home the dwelling that we inhabit? Or the people we inhabit it with? Or the place where we feel fully ourselves?

Faced with both a pandemic that, for everyone but for theater makers more acutely, truly shut down our ability to interact in the world as well as a long overdue racial reckoning that called into question both how we did our work and who we were actively including in that work, I've gained, I hope, some important perspective. We can get so caught up in maintaining the minutiae of the day to day, that we lose, a bit, the forest for the trees. We find ourselves so locked into our daily routine, we stop thinking about the why of it, or asking questions to keep ourselves focused on the reason behind the action, and we just do it because it's what we've always done.

It takes, it seems, a seismic shift to wrench away our blinders and force ourselves to see the larger picture and just where we stand. Sometimes it comes suddenly, and sometimes it is a slow build to a tipping point, but once that perspective shifts, it's impossible to avoid looking at things from this new lens.

For Emani – a young Black woman in a primarily White Vermont town in 1995, the struggle to survive in a precarious system leads her to Berry's retail store, where the promise of 5 dollars an hour and a focus on community appears, at first, to be just the thing she needs. But how long can the blinders hold in a system that is not designed with her in mind? Her identity makes her conspicuously visible, and yet being visible is very different than being seen. Despite great hope, the yearned for sense of belonging remains, for her, illusive.

As Steep builds our new home, these questions remain at the forefront of our conversation. How do we ensure that everyone walking through the door has the same opportunity to be, not just welcomed, but seen. How can this become a welcoming place, for not just our artists, but our patrons as well. It is the gift that theater gave to a younger me, and it is something I hope to actively cultivate for everyone walking through these doors: a sense of home.

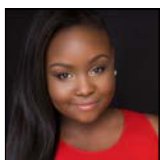
Thank you for being here.

Jonathan Berry

# CAST

## **Norm Woodel (Berry's Orientation Video Voice)**

Norm has been one of Chicago's most successful voice over artists for the past 30 years. He's voiced for CBSNews, ESPN, Alevé, Busch Beer, Chevy, and perhaps most famously, he was the voice of Hillary Clinton's 3AM Presidential election ad. That ad is said to have been as important to political advertising as LBJ's 1964 Daisy ad. Norm has a rewarding history having worked with Director Jonathan Berry in several Steep and other Chicago theater shows. He received a Jeff Award for Best Supporting Actor for his portrayal of the Papa in Berry's Production of *Golden Boy* in 2014.



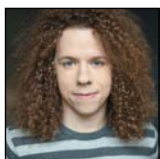
**Amber Sallis (Emmie)** Amber is thrilled to be back on stage after two long years post pandemic! She is a proud ensemble member of Steep Theatre and Imagination

Theatre. Selected theatrical credits include: *Top Girls* (Remy Bumpo) *Pomona*, *Hintz*, *Mosquitoes*, *Earthquakes in London*, (Steep), touring Chicago and suburban public schools (Imagination Theatre) and *The Last Days of Judas Iscariot* (Eclectic Full Contact Theatre). She is a BFA graduate of Northern Illinois University.



**Terence Sims (Gar)** Terence is thrilled to make his Steep debut. Television credits include: *4400* (CW); *Chicago Med* (NBC); Previous theatre credits include: *Ma Rainey's*

*Black Bottom* (Writer's), *Crumbs From the Table of Joy* (Raven), *Damascus* (Strawdog), *Barbecue* (Strawdog), *The Green Book* (Pegasus), *SkeletonCrew* (u/s, Northlight), *Monster* (Steppenwolf), *Between Riverside and Crazy* (u/s, Steppenwolf), *To Kill A Mockingbird* (Children's Theatre Madison). Terence is a member of Kinfolk Collective, an afrofuturist aesthetic tribe of artists & scholars working to rewrite and remaster the narrative of members of the African diaspora.



**Alex Levy (Logan)** Alex is delighted to return to Steep! As an actor/playwright, their Chicago theatre credits include: *Next to Normal* (Writers Theatre), *Do You Feel*

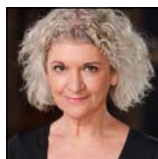
*Anger?* (A Red Orchid Theatre), *Mosquitoes* (Steep), *Phoebe in Winter* (Facility Theatre), and *HAIR* (Metropolis Performing Arts Centre). Regional credits include *Hamlet*, *Twelfth Night*, *Peter and the Starcatcher*, and *Rodeo* (Illinois Shakespeare Festival). TV credits include *Chicago Fire* (NBC) and *Empire* (FOX). Alex graduated from the School of Theatre and Dance at Illinois State University and is represented by Grossman & Jack Talent. Website: alex-levi.wixsite.com/site



## **Michaela Petro (Maxine)**

Michaela is proud to join Steep in welcoming you to their new home with *Paris*. She's spent stage time at Lifeline, Haven, Writers Theatre, Steppenwolf,

Strawdog, Wildclaw, Mary-Arrchie, Interrobang, Red Tape, Lakeside Shakespeare & Cole. Her passion outside of theatre is teaching self-defense with For Womxn, By Womxn, an inclusive-program designed to educate & empower. She is represented by Big Mouth Talent. Website: www.macpetro.com



## **Lynda Shadrake (Wendy)**

Lynda is thrilled to be making her Steep debut. An ensemble member of Griffin Theater, she has performed in *For Services Rendered*, *Pocatello* and *Balm*

*in Gilead* and has toured extensively with *Letters Home* and *Frindle*. Other credits include *The Importance of Being Earnest*, *Pygmalion* (Oak Park Festival Theatre), *Circle Mirror Transformation* (Redtwist), *Late Nite Catechism*, *Flanagan's Wake*, and tons of improv over the years. Lynda is represented by Big Mouth Talent. Thanks and love to Paul, Caylee, Jake, and the tribe.



## **Alex Gillmor (Dev)**

Alex is thrilled to finally be working on another Steep show. Some of his favorite parts are Mugsy in *Dealers Choice*, Bruce in *Bang the Drum Slowly*, The Man in

*The Vandal*, and Dale in *Parlour Song*. Thanks to the cast and crew for making this yet another great experience. Thanks to the audience, our board of directors, and everyone who has helped with this show and this new theatre. Special

## CAST, continued

thanks to Anna, Lili, and Greta the three most important women in my life.



**Josh Odor (Carlisle)** Josh is grateful to be back at Steep to help break in the new joint.

Josh has been seen at Steep in *The Last Days of Judas Iscariot*, *The Resistable Rise of Arturo Ui* and *Moment*. Chicago credits: *Her Honor Jane Byrne* (Lookingglass), *To Catch a Fish and Blood and Gifts* (TimeLine), *El Grito del Bronx* (Goodman/Collaboraction), *Oorah!* (Steppenwolf/LiveWire), *Scientific Method* and *The Firebirds Take the Field* (Rivendell), *Welcome to Jesus* (American Theater Co), *You on the Moors Now* (The Hypocrites), *Life On Paper* (Jackalope), *Hit the Wall* (The Inconvenience), *Winterset* (Griffin), *The Nutcracker* (House) and *Sweet Bird of Youth* and *The Time of Your Life* (Artistic Home). Regionally Josh has worked at the Long Wharf. TV/Film credits: *The Chi*, *Chicago Med/PD/Fire*, *Boss*, *Betrayal*, *Janie Jones* and *The Express*.



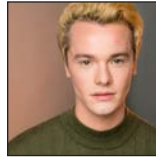
**Kaylah Crosby (Emmie U/S)**

Kaylah is delighted to be a part of *Paris* at Steep Theatre. Her favorite credits include Lillie Anne in *Barbecue* and Hannah Davis in *Luck of the Irish*, both performed at the UIC Mainstage. Kaylah is a recent UIC graduate, where she received her BFA in acting.



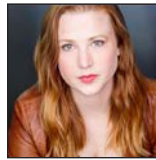
**Jon Jordan (Gar U/S)** Jon is an actor based in Chicago, IL. His TV credits include *NBC's Chicago P.D.* and The CW Network's *The 4400*. Jon graduated with a B.A. in TV

Broadcasting. He did freelance work in sports broadcasting for a number of years and also worked as a host, presenter and event planner on cruise ships. Jon's first acting classes were at The Second City and has continued his training with teachers from Chicago, L.A. and Atlanta. Jon was last seen onstage in *Creating ARthur* at Theater Wit. Jon is also a military veteran and his goal is to use his personal journey to inspire others.



**Isaac Snyder (Logan U/S)**

Isaac is thrilled to be working with Steep for the first time! His previous Chicago Credits include, *Understudying I Am Not Your Perfect Mexican Daughter* at Steppenwolf, *The 39 Steps* with Oil Lamp Theatre, and *Directors Haven* with Haven Theatre. Other credits include *Lockdown Theatre* and *Hampstead Stage Company*. He is a graduate of The School at Steppenwolf and is signed with DDO Artists Agency. He would like to thank his family, his chosen family, and his loving partner Evan.



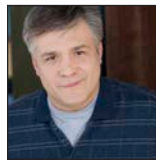
**Liz Sharpe (Maxine U/S)**

Liz is thrilled to be working with Steep for the first time, on this beautiful play with such an incredible group of artists. Her latest credits include *In the Canyon* (Hope) at Jackalope Theatre, *Byhalia MS* (Laurel) at the Den Theatre and Steppenwolf's *1700 Space*, and *SLICE* (A24) as Dana. She is represented by NV Talent.



**Anne Wriener (Wendy U/S)**

Anne is thrilled to be working with Steep Theatre and to be part of this production. She has been an actor in Chicago and Cincinnati for over twenty years. In Chicago, she has appeared with Northlight Theatre, Raven Theatre, City Lit Theatre, Kane Repertory, Artemisia and The Comrades. She dedicates this performance to the memories of Bill Esper and Ed Stern, teachers, mentors and friends.



**Daniel Houle (Dev / Carlisle U/S)**

Daniel received his BFA in acting from the University of Rhode Island before touring with The National Players. His Chicago credits include Speaking Ring Theater Company, American Theater Company, Timeline, Bohemian Theater Ensemble, Prop Theater, Step Up Productions, Silk Road Rising, Drury Lane and most recently Paramount. His TV credits include *Chicago PD*. Daniel would like to thank his family and friends for their continued love and support.



# PRODUCTION STAFF

**Eboni Booth (Playwright)** Eboni Booth is a writer and actress from New York City. Her play *Paris* had its premiere at the Atlantic Theater Company. Her work has been developed with Victory Gardens Theater, Ojai Playwrights Conference, Cape Cod Theater Project, WP Theater, Two River Theater, Clubbed Thumb, and Northern Stage. Eboni is a resident playwright at New Dramatists and the recipient of a Steinberg Playwright Award, a Helen Merrill Award for Playwriting, and a John Gassner award. She is a graduate of Juilliard's playwrighting program and the University of Vermont.

**Jonathan Berry (Director)** Steep Ensemble Member Jonathan Berry is a director and teacher in Chicago and spent 5 years as an Artistic Producer at Steppenwolf Theatre and the Director of The School at Steppenwolf. His Steep productions include Ike Holter's *Red Rex*, Simon Stephens' *Birdland*, Mike Bartlett's *Earthquakes in London*, Laura Wade's *Posh*, Ross Dungan's *The Life and Sort of Death of Eric Argyle*, Nick Payne's *If There Is I Haven't Found it Yet*, John Donnelly's *The Knowledge*, David Eldridge's *Festen*, Deirdre Kinahan's *Moment*, Howard Korder's *The Hollow Lands* and Brecht's *The Resistible Rise of Arturo Ui*. For Steppenwolf, he directed Clare Barron's *You Got Older*, Nick Payne's *Constellations*, the SYA productions of *The Curious Incident of the Dog in the Nighttime*, *The Crucible*, and *A Separate Peace*, and the world premiere of Melinda Lopez's *Gary for First Look*. He was also the Assistant Director for Anna D Shapiro's Broadway productions of *Of Mice and Men* and *This is Our Youth*. Jonathan is an Artistic Associate with Griffin Theatre, where his productions include Samuel D Hunter's *The Harvest* and *Pocatello*, Anderson's *Winterset*, Odets' *Golden Boy*, Miller/Tysen's *The Burnt Part Boys*, Sheik/Sater's *Spring Awakening*, the North American premieres of Simon Stephens' *Punk Rock* (Jeff award Director, Lead Actor, and Ensemble), *Port*, and *On the Shore of the Wide World*, Stephen Sondheim's *Company*, William Inge's *Picnic*, JB Priestley's *Time and the Conways*, Sidney Kingsley's *Dead End*, Brendan Behan's *The Hostage* and R.C. Sheriff's *Journey's End*. At the Gift Theatre, he has directed the world premieres of both *Dirty* and *Suicide, Incorporated* by

Andrew Hinderaker, as well as Shakespeare's *Othello* and Will Nedved's *6*. His Goodman Theatre productions include *The Solid Sand Below* and *The World of Extreme Happiness* for their New Stages Festival. Other work: Redtwist; *Look Back in Anger* and *Reverb*, Chicago Dramatists; *I am Going to Change the World*, Jackalope Theatre; *The Casuals*, Strawdog; the premiere of *On the Greenbelt* and *Conversations on a Homecoming*, Remy Bumpgo; *The Marriage of Figaro*, Theatre Mir; *The Sea and Brecht's Caucasian Chalk Circle*, and Lifeline Theater's *The Piano Tuner* (Afterdark Award – Best Production).

**Jennifer Aparicio (Stage Manager)** Jennifer has been working in the Chicago theater scene for the past several years as an Equity Stage Manager and freelance Production Manager. Select stage management credits include work with Victory Gardens, The Goodman Theatre, Theatre at the Center, Oak Park Festival Theatre, 16th Street Theater, and Lifeline Theatre. As a production manager, credits include work with Teatro Vista, Victory Gardens, Porchlight Music Theatre, Definition Theatre, Sideshow Theatre Company, and Oak Park Festival Theatre. Jennifer is an Artistic Associate with Teatro Vista and 16th Street Theater, and is a member of Actors' Equity Association.

**Heather Gilbert (Lighting Designer)** At Steep Theatre: *Arturo Ui*, *The Vandal*, *A Small Fire*, *Fallow*; Broadway: *The Sound Inside* at Studio 54 (Drama Desk Award, Outer Critics Circle Award: Little League Edition, Tony Nomination). Chicago: Steppenwolf, Goodman, Court, Writers Theatre, Northlight Theatre, Victory Gardens, Drury Lane, Chicago Children's Theatre, Red Orchid and countless storefronts all over the city. Regional theaters: Studio Theatre, Oregon Shakespeare Festival, Actors Theatre Louisville, Magic Theatre, Pasadena Playhouse, Kirk Douglas Theatre, Kansas City Repertory, Milwaukee Rep, Huntington Theatre, Williamstown Theatre Festival, Alley Theatre, ART, Berkeley Rep, and Olney Theatre Company. Head of Lighting Design, Columbia College Chicago.

**Conchita Avitia (Lighting Designer)** Conchita is a freelance Lighting Designer based in Chicago; she holds her BA in Theatre Design from

# PRODUCTION STAFF, continued

Columbia College Chicago. Recent design credits are with Free Street Theatre (*57 Blocks*), Broken Nose Theater (*This Is Only A Test*), WildClaw Theatre (*Hell Followed With Her*), and Water People Theatre (*The Delicate Tears of the Waning Moon*). When she isn't designing, she is serving as an ALD throughout the city; recent Assistant Lighting Designer credits are with TimeLine Theater (*Relentless*), Chicago Shakes (*As You Like It*), Steppenwolf Theatre (*Dance Nation*), and Court Theatre (*For Colored Girls*). For production photos and updates visit [www.avitalighting.com](http://www.avitalighting.com)

**Alexia Rutherford (Costume Designer)** Alexia is delighted to join Steep Theatre for the first time. Previous design credits include *Black Pearl*, *Sammy!*, and *Hail, Hail, Chuck Berry* (Black Theatre Alliance Award) for Black Ensemble Theatre, *Too Heavy for Your Pocket* and *Rutherford and Sons* for Timeline Theatre, *A Funny Thing Happened on the Way to the Forum*, *Double Trouble* (Jeff Award Nominated) and *Lady Day at Emerson's Bar and Grill* for Porchlight Theatre, *A Loss of Roses* and *Last Pair of Earlies* for Raven Theatre, *Sender* for A Red Orchid Theatre, *Thom Pain* for Theatre Wit, and *King Hedley* for Court Theatre.

**Daniel Etti-Williams (Sound Designer)** Daniel is an up-and-coming Sound Designer and Engineer local to Chicago. After studying Acting at Oklahoma City University, he moved to Chicago to participate in Steppenwolf Theatre Company's Apprenticeship Program. Since then, he has had the opportunity to work all over Chicago making theatre and telling stories and expressing his passion through design. Chicago design credits include *Run The Beast Down* (Strawdog Theatre Company), *Hershel and the Hanukkah Goblins* (Strawdog Theatre Company), *Beatrix Potter's Holiday Tea Party* (Chicago Childrens Theatre), *Haus of Atreus* (Mudlark Theater), *Peerless* (Northwestern University Graduate Directing Program), *On The Greenbelt* (Strawdog Theatre Company), *At The Vanishing Point* (The Gift Theatre).

## **Carol-Delaney Gibson (Props Designer)**

Carol-Delaney is a Northern Jersey native with a wide range of theatrical credits, ranging from stage manager, light designer, properties master, and choreographer (having trained at Broadway

Dance Center, and Alvin Ailey). Training extensively with Garage Theatre Group (Teaneck, New Jersey) Carol-Delaney's credits include Fringe Festival productions, apprenticeships with The New 42nd Street Studios, stage managing with The Frog and Peach Theatre Company, PA work throughout the boroughs of NYC, and light and sound assistant and board operation. Most recently (pre-pandemic) cast in a play with the New York City Player's Club reenacting the research found by a psychologist while retraining a Canadian police force, Carol-Delaney is excited to be a part of the theater world as we adjust mid pandemic.

**Tristin Hall (Intimacy Choreographer)** Tristin is thrilled to be working with Steep Theatre! Previous choreography credits include: *On the Greenbelt*, *The Effect* (Strawdog), *Comedy of Errors* (Chicago Shakespeare Theater), *Stick Fly* (Writers Theater), *Human Resources* (TheaterE-volve), *Some like it Red*, *Munsterspiel* (The Plagiarists), *Thin Mints* a workshop production (Greenhouse Theater), *Affection as a Space Vacuum* (Rhinfoest 2020), *Mad Girls* (Rhinfoest 2020). Assisting credits include: Sam Hubbard - *Yen*, (Raven Theater), *Too Heavy for Your Pocket* (Timeline), Rachel Flesher - *Sickle* (Red Theater), and John Mcfarland - *Marisol* (Northeastern). Thanks to their family for their constant love and support!

**Lisa Troi Thomas (Assistant Director)** Lisa has been working with Steep for the past 5 years but this is her first foray into Assistant Directing. She is so excited and grateful to be a part of this team and show, and she is so proud of this show because it is really a culmination of so many aspects of hard work and determination and love for the art. She continues to do captioning work through the Chicagoland area but if you are wondering where else you may have seen her it could have been anywhere from *The Fly Honey Show*, to other Chicago theatre shows such as *The Ridiculous Darkness*, or even behind the table helping with Steep's casting! She would like to say a big thank you to her support system that has gotten her this far in life.

**Julia Siple (Production Manager)** Julia is an ensemble member and thrilled to be making theater again. She has performed in many Steep



## PRODUCTION STAFF, continued

productions, including *Mosquitoes*, *The Life and Sort of Death of Eric Argyle*, *Motortown*, *A Small Fire*, *Under the Blue Sky*, *Love and Money*, *Moment*, *Festen* and *Harper Regan*. She holds a BFA in Theatre Performance from the University of Michigan. Welcome to our new home!

**Lucy Carapetyan (Casting Director)** Lucy first worked with Steep as an actor in 2008, and has been an ensemble member since 2015. As Casting Director, Lucy is committed to diversifying our stages, making our stories reflect our community, and collaborating with directors to create an empowering and joyful audition room. She is proud to be part of bringing Steep's on-stage ensembles together show after show. Lucy is a graduate of Northwestern University.

## SPECIAL THANKS

Jason Akemann  
Charlotte Berry  
Manasi Bhattacharyya  
The Bramble  
Mary Brennan  
Ally Brisbin  
Monica Chadha  
Deb Clapp  
Dave Cocagne  
Columbia College  
Chicago  
Don Cortelyou  
Liz DeBoni  
Lee Dickson  
Edgewater Chamber of  
Commerce  
Kelly Fitzgerald  
Diane & Ian Galleher

Jerry Goodman  
Jane Hollinger  
Molly Johnson  
Matt Lunt  
Kosmo Music  
Zubin Kammula  
Kurt Kolar  
Eileen LaCario  
Allison Lipsman  
Dan Luna  
Tara Mallen &  
Keith Kupferer  
Leo Mendoza  
Liz McGarry  
Elisa Miller  
Lee Miller  
Belina Mizrahi &  
Jon Hodgkins

Betsy Moore  
Gabe Morrison  
Bridget O'Keefe  
Alderman Harry  
Alderman  
Dustin Paige  
Euna Park  
Amanda Passmore  
John Paulun  
David Raino-Ogden  
Kathleen Rafferty  
David Reed  
James Reeves &  
Brian Dudey  
Rivendell Theatre  
Ensemble  
Jeff Riemer  
Beth Rohlmeier

Meaghan Schneider  
Adrienne Smith  
Alderman Mary Ann  
Smith  
The School at  
Steppenwolf  
Patrick Shanahan  
Janet Stengle  
Jess Vance  
Smitha Vasan  
Jack Wallace

## LAND ACKNOWLEDGEMENT

**Steep Theatre sits on Native land.** This area is the traditional homelands of the people of the Council of Three Fires, including the Ojibwe, Potawatomi, and Odawa. American Indians continue to call this area home, and now Chicago is home to the sixth largest Urban American Indian community that still practices their heritage, traditions, and care for the land and waterways. For over 200 years Native Nations have been forcibly removed from this territory, and this land continues to be a site of gathering and healing for more than a dozen other Tribal Nations. You can support them by supporting Native art and artists, organizers, activists, and people in your home and work communities in concrete ways, and by moving with awareness, compassion, and bravery.

**No matter where you are coming from or how you got here, we invite you to move respectfully with us on this land and in this space.**

# DONORS

Steep Theatre is profoundly grateful to the following supporters for their generous contributions.  
This list reflects gifts received between June 1, 2021 and May 31, 2022.

## Season Sponsor

The Bayless Family  
Foundation

## Production Sponsors

Dr. Susan Burland &  
George Plumb  
Ken Burlington  
James T. O'Neill  
Barbara & Randy  
Thomas  
Lisa & Randy White  
Jan Willer &  
Mark Osing,  
Martha Anne &  
Stephen Yandle

## Steep Producers (\$5,000 and up)

The ADJLM Foundation  
The Bayless Family  
Foundation  
Dr. Susan Burland &  
George Plumb  
Ann & Rich Carr  
The City of Chicago  
Department of  
Cultural Affairs and  
Special Events  
Holly & David Collins  
The Gaylord & Dorothy  
Donnelley  
Foundation  
The Illinois Arts Council  
Agency  
Ted Lowitz  
The MacArthur Funds  
for Culture, Equity,  
and the Arts at the  
Richard H. Driehaus  
Foundation  
Alan & Debra  
Rosenberg

## Steep Benefactors (\$1,000 to \$4,999)

Anonymous  
Ken Burlington  
Frank G. and Gertrude  
Dunlap Fund  
Sallie Gaines &  
Mark Richardson  
Deborah Garber &  
John Tielsch  
Leigh & John  
Hourihane  
ICF  
Peter James

George Jones  
Carolyn & Gordon Kirk  
Rita & Jim Knox  
Sara & Adam Levy  
Barbara & Ed Mills  
Jen & Peter Moore  
Margaret & Peter  
Morris  
Robert & Barbara  
Richards  
Karen Shankman &  
Jim Fruehling  
Elisabeth Rose & Owen  
Shapiro  
James T. O'Neill  
Bill & Cathy Siple  
Barbara & Randy  
Thomas  
Anna Wermuth  
Lisa & Randy White  
Jan Willer & Mark  
Osing  
Martha Anne &  
Stephen Yandle

## Steep Patrons (\$500 to \$999)

Anonymous  
AbbVie  
Ann Marie Arden  
Michael Bauschelt  
John Bierbusse  
Stacy Bosma &  
James Allen  
Denise Burch &  
Eric Weinstein  
Lisa Disch  
Equifax  
Kelly Fitzgerald &  
Chad Newman  
Diane & Ian Galleher  
Elaine Glusac &  
Dave Bartusek  
Denise Hazaga &  
Lisa Vandermark  
John Hoffmann  
The Illinois Tool Works  
Foundation  
Molly Moore Johnson  
Kerry & Kenny Lassus  
Scott McCausland  
Cynthia Marker  
Anne & Richard Moore  
Kate Moore  
Margaret Piatt &  
Jim White  
Prairie Home Builders

Karen & Frank  
Schneider  
Julia Spann &  
Paul Carapetyan  
Sylvia & Joseph Stone  
Jeannie Taylor &  
Mike Roberts  
Pooja & Peter  
Vukosavich

## Steep Contributors (\$250 to \$499)

Anonymous  
Rita & Lloyd Allison  
Tiana Benway,  
in memory of  
Marie O'Connor  
Kay Berkson &  
Sidney Hollander  
Joan & Hank Bliss  
Laurie Breittkopf &  
Gregory Mancuso  
Meg & Matt Breslin  
Adam & Jillian Cullin  
Dell  
Dan & Katherine  
Diamond  
Scott & Julie  
Drummond  
Edith I Farrar  
Matthew J. Fleming  
Judith R. Freeman  
Ireta Gasner  
Mary & Charlie Gofen  
Susan & Peter Gray  
Carol & Alan Greene  
Joe Hartness &  
Troy Baresel  
James & Lois Hobart  
Robin Kacyn &  
Matt Chapman  
The Kenney Family  
Stu Kiesow  
Cynthia Kirk  
Ricki & Josh Lowitz  
Meridyth & Gordon  
McIntosh  
Angela & Charles Platt  
Jerry Proffitt  
Jon Ravenscroft  
Dr. Edward O Riley  
Eugene Rinaldi  
Karen & Charlie Rose  
Mary Rybowiak &  
Tom Ferrini  
The Saints  
Hunter Sanders


Susan & Gary Segal  
Susie Stephenson  
Holly, Tony, & Nathaniel  
Storck  
Tilly Wilhoite  
Mark Woodward

## Steep Circle (up to \$249)

Anonymous  
John Adams  
Rex Babiera &  
Geoff Meyer  
Larry Baldacci &  
Ray Cunha  
James & David  
Baran-Robertson  
Rollie Batten  
Linda Bierig  
Cathy and Trip Blair,  
in honor of Kelly  
Anne Fitzgerald  
Leroy Blommaert  
Ann Boland  
The Brownells  
Eugenia & Arch Bryant  
Janet Burroway  
Karen A Callaway  
Carol & Stephen Cann  
Chris Chmelik  
Johnny Clark  
Mark Coulombe  
Michelle Courvais  
Stephany Creamer  
James K. Cunningham  
Kim & John Dale  
Alyssa Dickman  
Vincent DiFruscio &  
Neil Averick  
Kenneth East &  
Timothy Thurlow  
Yazid Ebeid  
Pat Dean & Phil Eckert  
Virginia Fitzgerald  
Verna & Stephen  
Foster  
Janet Franz  
Douglas Frew  
Debra Galassini  
Stephanie Garrison  
Gregg Gilman  
Carolyn & Dan  
Goffman  
Valerie Gorman  
Susan & Anthony  
Grosch

## DONORS, continued

Cindy & Mark Greenwood	Thad King	Peter Norman	Laurie Shaman & Ed Hinkley
Randal Hamburg	Joe Knotts	Gay Byrne Olk	Carol Borden & Joel Shapiro
Marilyn Heckmyer	Jeremy Krifka	Kate Piatt-Eckert & Tony St. Clair	Norm Sloan
Heidi Henning	Peter Kuntz & Lori Kleinerman	Linda Randall	Gail & Bob Spiel
Phyllis Hill	Sandy & John Lemming	James Reeves & Brian Dudey	Adrienne & Tim Stewart
Diane Hires & Bill Crowther	Joyce & Jules Lerner	Marilyn Reid	Beth Swaggerty
Holly & Tom Hirst	Daniel Lunney & Marco Espinoza	Cortney & Chris Renton	Jim Swanson
Leslie Hoadley	Michael Lunney	Deirdre Rice	Elizabeth A. Thulin
Mary Alice Hope	Mary Mackay & Edward Wheatley	Mary Sue & Clark Robson	Dylan Toropov
Paula Horowitz	Nancy Malitz	Judy & Bernie Rosenstein	Valery True
Judith & Tony Iacuzzi	Bob Mason	Linda Rudnick	William Udovich
Mia Jacob	Dr. Norman E. Masters, Jr.	Dr. Elaine A Sachnoff	Linda & Craig Walker
Stasha Jain	Liz McGarry	Arnel Sancianco	Brian Wesselman
Tamara & Neil Jain	Chris McGeehan	K. M. Sandrick	Danniel Wilke
Angela Just	Donald Mckay	Judi Schindler	Amy & Jonathan Wishnick
Edye Kamensky	Fran Moeckler	Mary Jo Schmitz	Norman Woodel
Sandy Karuschak	Pamela Monaco	Jill & Paul Schoenwetter	Alana Zalas
Charles L. Katzenmeyer	Joseph Moore	Jim Schulman	
Dean Kaufer	Martha Moore Battles	Hugh Schulze	
Paul Kaufman	Lenore Murphy	Sharon Seeder	
Charlotte & David Kempner	Susan & Patrick Nash	Bonnie Shadrake	
Meg Kennedy Shaw & John Cederquist	Frank Newell		



Through the *Lights Up Edgewater* campaign, Steep is creating a new home for art, artists, and community. Learn more at [steeptheatre.com/lightsup](http://steeptheatre.com/lightsup).

*Steep is profoundly grateful to the following supporters for their generous contributions. This list reflects gifts received as of May 31, 2022.*

The ADJLM Foundation	Lisa Donovan & Brad Smith	Jill Mannor	James & David Baran-Robertson
Seth Arkin	Ruthann & Richard Edwards	David G Marshall	Alan & Debra Rosenberg
Elaine Glusac & Dave Bartusek	Lyn Spillman & Russell Faeges	Joan Mazzone	Karen & Frank Schneider
Dave & Megan Bock	Kelly Fitzgerald & Chad Newman	Ann McGill & Kate Welborn	Jessica & Christoph Schrey
Deborah & Tom Bulgrin	Stephanie Garrison	Anne Marie Dumas Mitchell & John Bistolfo	Jim Schulman
Ken Burlington	Valerie Gorman	Jen & Peter Moore	Hope & Jeff Sheffield
Ann & Rich Carr	Dorothy Harza	Colleen & John Mueller	Timothy Sherck
Elaine Vozar & George Cederquist	Denise Hazaga & Lisa Vandermark	James T. O'Neill	Julia Siple & Kelly Carpenter
Louis Chieng	Elaena Hoekstra	Amanda & Doug Passmore	Jenny & Patrick Stapleton
Johnny Clark	Shirley & David Holdeman	Kaye & Bob Passmore	Craig Steadman
The Robert D. Collins Fund	John Kadus	Anne Puotinen	Vanguard Charitable
Mary Godlewski & Don Dearing	Charlotte & David Kempner	James Reeves & Brian Dudey	Lisa & Randy White
Sonya Dekhtyar & Benny Zheng	Stu Kiesow	Robert Remer	Jan Willer & Mark Osing
Lee Dickson	Ted Lowitz	Melissa & Jeff Riemer	William Blair
Nic Dimond			
Lisa Disch			



# LIGHTS UP EDGEWATER

A New Home for Art, Artists,  
and Community

## A \$3 million campaign to

- ◆ Purchase and renovate Steep's new home at 1044 W Berwyn Ave
- ◆ Invest in artists through increasingly equitable compensation
- ◆ Build on our commitment to fiscal sustainability



Having a home venue has been a vital part of our story over the past twenty years. It has allowed us to create a uniquely warm, inviting atmosphere that supports honest, fearless work from artists and emboldens audiences to engage in challenging stories and conversations. It has grounded us in our community. As we move forward, we are inspired to create a cultural resource for neighbors, artists, and audiences alike.

Join us as we invest in this future together.

Learn more at [steeptheatre.com/lightsup](https://steeptheatre.com/lightsup)

