

Steep Theatre Presents the U.S. Premiere of

SIMON STEPHENS'  
**LIGHT FALLS**

DIRECTED BY  
ROBIN WITT



# STEEP THEATRE COMPANY

Steep Theatre Company is an ensemble of artists driven by a shared commitment to the organization's mission: *to bring out the everyday truths in the stories we tell through ensemble work and to reach out to non-traditional theatregoers by seeking out stories and creating experiences relevant to them.* Steep believes theatre should stoke conversations about the issues and conditions that are part of all of our lives; conversations that take place between artists and audiences in the theatre, in the lobby, and long after everyone has gone home.

---

## ENSEMBLE MEMBERS

Laura Alcalá Baker	Thomas Dixon	Emily McConnell	Joe Schermoly
Catherine Allen	Patricia Donegan	Peter Moore	Joanie Schultz
James Allen	Pete Dully	Caroline Neff	Julia Siple
Debo Balogun	Jonathan Edwards	Jim Poole	Sasha Smith
Jonathan Berry	Nate Faust	Jon Ravenscroft	Dan Stratton
Lucy Carapetyan	Alex Gillmor	Egan Reich	Kendra Thulin
Chris Chmelik	Nick Horst	Joel Reitsma	Brandon Wardell
George Cederquist	Destini Huston	Melissa Riemer	Chelsea M. Warren
Matt Chapman	Lauren Lassus	Brandon Rivera	Robin Witt
Brad DeFabo Akin	Kristin Leahey	Omer Abbas Salem	Brendan Melanson
Maria DeFabo Akin	Cindy Marker	Amber Sallis	<i>in memoriam</i>

---

## ARTISTIC ASSOCIATES

Alison Siple	Simon Stephens <i>Assoc. Playwright</i>	Ellen Willett
--------------	--	---------------

---

## BOARD OF DIRECTORS

Cooper Melgreen <i>President</i>	Doug Passmore <i>Treasurer</i>	Anne Puotinen <i>Secretary</i>
Dave Bartusek	Sonya Dekhtyar	Anne Marie Mitchell
Dave Bock	Stu Kiesow	Jessica Schrey
Kelly Carpenter	Ted Lowitz	

---

## STAFF

Peter Moore <i>Artistic Director</i>	Lisa Troi Thomas <i>Audience &amp; Artist Experience Manager</i>	Danie Anderson <i>Marketing &amp; Communications Manager</i>	Derek Van Tassel <i>House Manager</i>
Kate Piatt-Eckert <i>Executive Director</i>			Stu Kiesow <i>Graphic Designer</i>

---

## SUPPORT



MacArthur  
Foundation



PAUL M. ANGELL  
FAMILY FOUNDATION

CHICAGO DEPARTMENT OF  
**DCASE**  
CULTURAL AFFAIRS & SPECIAL EVENTS



NATIONAL  
ENDOWMENT for the **ARTS**  
arts.gov



GAYLORD & DOROTHY  
DONNELLY FOUNDATION

---

## MAKE A GIFT



Help Steep create more theatre like *Light Falls*. Scan to donate, or inquire at the box office.

venmo



---

## STEEP THEATRE COMPANY

1044 West Berwyn, Chicago, IL 60640 | PO Box 607415, Chicago, IL 60660  
www.steeptheatre.com • info@steeptheatre.com • (773) 649-3186



# Steep Theatre Company

proudly presents the U.S. Premiere of

## Light Falls

by Simon Stephens

CAST (in order of appearance)

Christine/Claudie/Andrea/Victoria	Kendra Thulin <sup>^</sup>
Jess	Stephanie Mattos
Michael	Nate Faust <sup>^</sup>
Bernard	Peter Moore <sup>^</sup>
Michaela	Cindy Marker <sup>^</sup>
Andy (July 8 - July 24)	Omer Abbas Salem <sup>^</sup>
Andy (July 28 - August 14)	August Forman
Steven	Brandon Rivera <sup>^</sup>
Emma	Susaan Jamshidi*
Ashe	Ashlyn Lozano
Joe	Debo Balogun <sup>^</sup>

### UNDERSTUDIES

Christine/Claudie/Andrea/Victoria	Cindy Marker <sup>^</sup>
Jess	Shaina Schrooten
Michael	Chris Lysy
Bernard	Mickey Jordan
Michaela	Daiva Bhandari
Andy	Sebastian Summers
Steven	Derek Preston Ray
Emma	Tina El Gamal
Ashe	Tori Thompson
Joe	Dylan Obrochta

### PRODUCTION STAFF

Director	Robin Witt <sup>^</sup>
Stage Manager	Lauren Lassus <sup>^</sup>
Scenic Designer	Sotirios Livaditis
Lighting Designer	Brandon Wardell <sup>^†</sup>
Costume Designer	Alison Siple <sup>^^</sup>
Sound Designer	Daniel Etti-Williams
Composer & Music Director	Thomas Dixon <sup>^</sup>
Intimacy Choreographer	Micah Figueroa
Dialect Coach	Adam Goldstein
Production Manager	Catherine Allen <sup>^</sup>
Technical Director	Evan Sposito
Casting Director	Lucy Carapetyan <sup>^</sup>
Assistant Director	Lisa Harriman
Production Electrician	Haley Carr
Carpenter	Will Hughes

<sup>^</sup>Steep Theatre Ensemble Member <sup>^^</sup>Steep Theatre Artistic Associate <sup>†</sup>Member of United Scenic Artists Local 829

\*Appearing through an Agreement between Steep Theatre and Actors' Equity Association, the Union of Professional Actors and Stage Managers in the United States.

Light Falls is presented by special arrangement with Dramatists Play Service, Inc., New York.

Special thanks to University of North Carolina's Faculty Research Grant.

The video and audio recording of this show is strictly prohibited. You may take photos of the stage before or after the show, but not when actors are present. If you post these photos online or elsewhere, please credit the production's designers listed above.

Season Sponsor: **The Bayless Family Foundation**

This production of *Light Falls* was sponsored by: **Dr. Susan Burland & George Plumb, Ken Burlington, Kassie Davis & Bruce Beatus, Karen Shankman & Jim Fruehling, Lisa & Randy White, Jan Willer & Mark Osing, Martha Anne & Stephen Yandle**

Hospitality Sponsor: **Ted Lowitz**

**SDC** The Director is a member of the **STAGE DIRECTORS AND CHOREOGRAPHERS SOCIETY**, a national theatrical labor union.



# LIGHT FALLS

## Part One

Christine

## Part Two

Blackpool, Jess's flat (Jess and Michael)

Doncaster, Salutation Pub (Bernard, Michaela, and Emma)

Durham, outdoor café (Andy and Steven)

Blackpool, Claudie's café (Jess and Michael)

Ulverston, terraced house (Ashe and Joe)

Durham Cathedral (Andy and Steven)

Blackpool, Church of the Sacred Heart (Jess and Michael)

## *Intermission*

## Part Two (Continued)

Doncaster, Mercure Hotel (Bernard, Michaela, and Emma)

Blackpool, graveyard of Church of the Sacred Heart (Jess and Michael)

Ulverston, terraced house (Ashe and Christine)

Durham, Travelodge (Andy and Steven)

Doncaster, car park, Mercure Hotel (Bernard and Michaela)

Durham, Holiday Inn (Andy and Steven)

## Part Three (a few days later)

Stockport, Bernard and Christine's home

## Music

"The Great North Road"

Music by Thomas Dixon

Words by Robin Witt and Thomas Dixon

# LAND ACKNOWLEDGEMENT

**This theatre sits on Native land.** This area is the traditional homelands of the people of the Council of Three Fires, including the Ojibwe, Potawatomi, and Odawa. American Indians continue to call this area home, and now Chicago is home to the sixth largest Urban American Indian community that still practices their heritage, traditions, and care for the land and waterways. For over 200 years Native Nations have been forcibly removed from this territory, and this land continues to be a site of gathering and healing for more than a dozen other Tribal Nations. You can support them by supporting Native art and artists, organizers, activists, and people in your community in concrete ways, and by moving with awareness, compassion, and bravery.

**No matter where you are coming from or how you got here, we invite you to move respectfully with us on this land and in this space.**

# ARTISTS

## CAST



**Kendra Thulin (Christine/  
Claudie/Andrea/Victoria)**

Kendra is elated to continue in Simon Stephens' long collaboration with Steep: *Wastwater* (Jeff Nomination

Best Supporting Actress), *Motortown*, *Pornography* and *Harper Regan* (Jeff Award Outstanding Lead Actress). Other Steep credits include *Linda* (Jeff Nomination Performance in a Principal Role), *Posh* (Jeff Award Best Ensemble), *The Cheats*, *Martyr*, *The Vandal* (Jeff Nomination Lead Actress), *Fallow*, *Luther*. Other credits include *A Doll's House, Part 2* (u/s Nora), *Steppenwolf*, *A Day in the Death of Joe Egg* (Sheila), *Stage Left*, and multiple plays with Strawdog and Lifeline Theatres. She has dialect coached numerous productions, including Steep's *Earthquakes in London*, *Brilliant Adventures*, *Love and Money*. Kendra is an Associate Professor of Theatre at Columbia College Chicago, teaching acting, heightened language, and voice in both undergraduate and graduate programs.



**Stephanie Mattos (Jess)**

Stephanie is an actor and fight director in Chicago, and is thrilled to work with Steep on this production! When she's not on stage, she can

be found on the internet as the co-host of the show *Afterschool Anime Club Podcast*. Recent Credits: *Reentry* (Montana Rep), *The Chi, Oh, Colonizers* (Collaboraction), *Twelfth Night* (Midsommer Flight). She is represented by Big Mouth Talent. IG: [asmattering](#)  
Website: [stephaniemattos.com](#)



**Nate Faust (Michael)** Nate earned his MFA from The New School for Drama in New York City and trained at The School at Steppenwolf. Recent credits include: *Moe*,

*Pomona* (Steep Theatre); *Max, Red Rex* (Steep Theatre); *Young Robert, Earthquakes in London* (Steep Theatre); *Man, The Blue Room* (59E59); *Ferd, American Royal* (Samuel French Play Festival); and as Max, in *Gabe*

McKinley's *Extinction*. He has also been seen in *Chicago P.D.* and *Empire*. Nate is a proud ensemble member of Steep Theatre Company and represented by Paonessa Talent Agency. Website: [www.natefaust.com](#)



**Peter Moore (Bernard)** Pete is one of the founding members of Steep Theatre and its Artistic Director. Over the years, he has appeared in a bunch of shows at Steep,

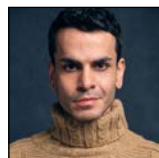
including *Pomona*, *Linda*, *Birdland*, *Hintler*, *The Few*, *Wastwater*, *Motortown*, *Pornography*, *Harper Regan*, *If There is I Haven't Found it Yet*, *The Life and Death of Eric Argyle*, *A Brief History of Helen of Troy*, *The Resistible Rise of Arturo Ui*, and some other impossibly long titles. Other theater credits include *I Am Not Your Perfect Mexican Daughter*, *The Crucible*, and *August: Osage County* (U/S), *Steppenwolf Theatre*; *Ma Rainey's Black Bottom*, *Writers Theatre*; *In the Canyon*, *Jackalope Theatre*; and *The Downpour*, *Route 66 Theatre*, among others. TV/Film credits include *The Red Line* (CBS); *Chicago Med*, *Chicago P.D.*, *Chicago Justice*, and *Chicago Fire* (NBC); the pilot of *Convergence*; and the Bollywood blockbuster *Dhoom 3*. Pete is a graduate of The School at Steppenwolf and Bowdoin College, and is represented by Paonessa Talent.



**Cindy Marker (Michaela)**

Cindy previously appeared in *Mosquitoes*, *Linda*, *Birdland*, *Earthquakes in London*, and *Moment*. She is

immeasurably grateful to be reunited with her Steep family and extends warm thanks to our entire community for your support throughout these past years and as we head into an exciting new era in our brand new home! Et, comme d'habitude, merci mille fois à Paul et à Jack pour l'amour et l'humour qu'ils partagent tous les jours.



**Omer Abbas Salem (Andy)**

Abbas is a proud Steep Theatre ensemble member and a Chicago actor and playwright. As an actor, he's worked with The Goodman,

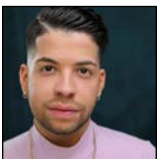
## ARTISTS, continued

The New Coordinates, Jackalope, Steep (*Earthquakes in London*, *Linda*, *Chicago Sinfonetta*), Silk Road Rising, Griffin, The House, Bailiwick Chicago, Actors Theatre of Louisville, Roundabout, and The Atlantic. As a playwright, his work has been produced at Steppenwolf Theater, The Goodman Theater, Jackalope Theater, First Floor Theater, DePaul University, National Queer Theater, Definition Theatre, and The New Coordinates. He is the winner of Steppenwolf's SCOUT Development Project (20/21), Definition Theatre's Amplify Commission (20/21), Goodman Theater's Future Labs Development (21), The Cunningham Commission a DePaul Theatre School (21/22), The Goodman Theater's Playwright's Unit (21/22), and First Floor Theater's Blueprint Commission (21/22). He was an apprentice of the Actors Theatre of Louisville (17/18) and is also a proud ensemble member with Jackalope Theatre, First Floor Theater, and The New Coordinates. He is represented by DDO Artist Agency and The Gersh Agency. More at [www.omerabbassalem.com](http://www.omerabbassalem.com).



### August Forman (Andy)

August is an actor and playwright based in Chicago. Credits include: *Hand to God* (Paramount Theatre); *Tiny Beautiful Things* (Victory Gardens Theater and Theatre Squared); *Rutherford and Son* (Time Line Theatre); *Elizabeth Rex* and *The Fair Maid of the West* (Oak Park Festival Theatre); *Once Upon a Mattress* (Theo Ubique); *Plot Points in Our Sexual Development* and *A Kind of Weather* (Diversions Theatre); *Twelfth Night* (Midsommer Flight); *The Lady Demands Satisfaction* (Babes with Blades); *Les Innocents* ((re)discover theatre); and *Girl in the Red Corner* (Joseph Jefferson Award for Best Supporting Actor–Broken Nose Theatre). August is represented by Gray Talent Group.



### Brandon Rivera (Steven)

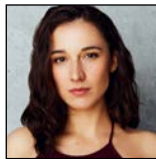
Brandon is a proud ensemble member of Steep Theatre Company. Credits at Steep include *The Leopard Play*, or *sad songs for lost*

*boys*, *Pomona*, *Zürich*, and *Brilliant Adventures*. Other credits include: *Pinocchio* (The House Theatre of Chicago), *No Child* (Cape Fear Regional Theatre), and *Into the Beautiful North* (16th Street Theater). Brandon is represented by Gray Talent Group. You can listen to Brandon wherever podcasts are available in Make-Believe Association's audio drama *Brava* written by Nancy García Loza. Website: [www.makebelieve.fm/brava](http://www.makebelieve.fm/brava)



### Susaan Jamshidi (Emma)

Susaan (SAG/AFTRA, AEA) is excited to make her Steep debut. She recently made her Seattle Rep debut in *Selling Kabul* (2022 Pulitzer Prize Finalist in Drama). Chicago credits include Goodman Theatre, Lookingglass (Jeff Award Nomination for Best Ensemble – The Arabian Nights), Victory Gardens, Drury Lane, The Gift, Northlight, Remy Bumppo, Theatre Wit, Halcyon, Backroom Shakespeare, and Sideshow Theatre Company (Jeff Award for Best Ensemble – Idomeneus), among others. International tours: Oh My Sweet Land (London/Toronto/Vancouver with Silk Road Rising). Regional: Arena Stage, Berkeley Rep, Rep of St. Louis, and Notre Dame Shakes among others. Film/tv: *The Tam and Kevin Show*, *After: A Love Story*, *Don't Worry About It*, *Being There*, *Little Nations*, *Cicero in Winter*, *The Wallet*, *Chicago Med*, *Chicago P.D.* and *Sirens*. Susaan earned her MFA from DePaul University and is represented by Paonessa Talent. @susaanlayla



### Ashlyn Lozano (Ashe)

Ashlyn is so happy to return to Steep for *Light Falls*. Chicago Theatre credits include: *DREAM: A Reimagining* (Chicago Shakespeare); *The Dream King* (Teatro Vistaworkshop); and *Pomona* (Steep Theatre). She has appeared on Network television, in short films, and a browser-based musical with a cast album on Apple Music (*The LEA Project*, [www.leaproject.dev](http://www.leaproject.dev)). She speaks English & Spanish and holds a BFA from the Theatre School at DePaul. Ashlyn is proudly represented by Paonessa Talent.

## ARTISTS, continued



**Debo Balogun (Joe)** Debo is thrilled to be making his first stage appearance in over two years with Steep Theatre. Chicago theatre credits: *graveyard shift* (Goodman Theatre), *Red Rex*, *Zurich* (Steep Theatre), *Mary Shelley's Frankenstein* (Lookingglass Theatre) *Fair Maid of the West*, *You Can't Take It With You* (Oak Park Festival Theatre), *Mary's Wedding* (First Folio Theatre), and *Moon Man Walk* (Definition Theatre Company). TV/Film: a recurring role on *Power Book IV: Force* (STARZ), *Single Drunk Female* (Freeform), and *Chicago Med* (NBC). He is an Artistic Associate with Oak Park Festival Theatre and a Steep Theatre Company ensemble member. Represented by Gray Talent Group.

## UNDERSTUDIES



**Shaina Schrooten (Jess U/S)** Shaina is so excited to be working with Steep for the first time and to be back in the theatre!! The last play she did before the pandemic was *Comedy of Errors* with Chicago Shakespeare Theatre. Before that, she was in *Romeo and Juliet* with Montana Shakespeare. Some of Shaina's favorite theatres she has worked with in Chicago include Strawdog Theatre, Organic Theatre Company, Theater Wit, Griffin Theatre, Jackalope Theatre Company, The Second City, and (re)Discover Theatre where she was a company member. Shaina has also worked as a teaching artist in Chicago for the past 7 years. This summer you can see her in a feature film, *Revealer*, which was shot during the pandemic and is streaming on Shudder! Shaina is represented by DDO Artist Agency.



**Chris Lysy (Michael U/S)** Chris is proud to be making his Steep debut! Other Chicagoland performances include *Labyrinth* (Broken Nose Theatre), *The Next Big Thing* (The Factory Theater), *The Invaders* (Halcyon Theatre Co.), *Terra Nova* (Three Crows

Theatre Co.), *La Ronde* (Stage 773), *Macbeth* (Shakespeare All-Stars), and *A Klingon Christmas Carol* (Commedia Beauregard). He is a graduate of Act One Studio's Conservatory program (2009) and of Virginia Tech's Theatre Arts program (2007). He has also worked with the Great River Shakespeare Festival of Winona, MN, in both *Julius Caesar* and *Macbeth*. He'd like to thank his wife and the rest of his loved ones for all of their support! [chrislysy.com](http://chrislysy.com)



**Mickey Jordan (Bernard U/S)** Mickey is relatively new to the Chicagoland area, having recently become the first ever graduate of Northwestern University's brand new MFA in Acting program. In his home town of Portland, Oregon, he worked with various and sundry theater companies, including Profile Theatre, Shaking the Tree, Defunkt, and the Jewish Theatre Collaborative, among many others.



**Daiva Bhandari (Michaela U/S)** Daiva is a Chicago-based dance and theatre artist originally from southern Louisiana. She has worked on stage with The Neo-Futurists, Steppenwolf, Theatre Y, Manual Cinema, Pop Magic Productions, Emerald City Theatre, and The Building Stage. She has performed the choreography of Michael Estanich, Lucy Vurusic-Riner, Corinne Imberski, Kelly Anderson and Erin Kilmurray. Daiva earned her BA in Drama from Loyola University, New Orleans and studied Modern Dance at Tulane. [daivabhandari.com](http://daivabhandari.com)



**Sebastian Summers (Andy U/S)** Sebastian is thrilled to be working with Steep Theatre! He was last seen in Ghostlight Ensemble's staged reading of Margaret Cavendish's play *The Convent of Pleasure* as part of their For Your (Re)consideration series. He would like to thank Steep Theatre for the opportunity and for introducing Simon Stephens' poignant, heartfelt story to the US.

## ARTISTS, continued



**Derek Preston Ray (Steven U/S)** Derek is extremely excited to be making his Steep Theatre debut. He was previously seen in *Come Undone* at Three Brothers Theatre. Favorite roles include Christopher in *Curious Incident...Nighttime*, Newbie in *Hit The Wall*, and Karlmann in *The Ugly One*.



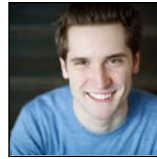
**Tina El Gama (Emma U/S)** Tina is a Chicago-based actor, director, educator, and arts administrator. They hold a BFA in Acting from the University of Illinois at

Chicago. Tina was recently featured in Newcity Mag's Players 50 2022. Recent acting credits include: *Passage u/s* (Remy Bumpo), *Young Playwrights Festival* (Pegasus Theater), *Twice, Thrice, Frice... u/s* (Silk Road Rising) *Much Ado About Nothing* (Oak Park Festival Theatre), the Chicago premiere of *I Call My Brothers* (Interrobang Theatre Project), and the world premiere of *Through the Elevated Line u/s* (Silk Road Rising). When she isn't performing and directing for stages across Chicago, Tina serves as the Managing Director of Jackalope Theatre Company. She is represented by Big Mouth Talent.



**Tori Thompson (Ashe U/S)** Tori is an actor, artist and storyteller from Northern California. She received her Bachelor's degree in Drama from UC Irvine where she

directed and starred in her own independent production of *The Wiz*. This year, Tori received her Master of Fine Arts degree in Acting from DePaul University when she performed in shows such as *Long Time Since Yesterday* (Thelma) and *Measure for Measure* (Provost). Tori also had the privilege of working in Maine at Theatre at Monmouth's summer stock season 2021 where she performed in shows such as *Crumbs from the Table of Joy* (Ermina) and *Age of Bees* (Debra).



**Dylan Obrochta (Joe U/S)** Dylan is ecstatic to be a part of Light Falls at Steep Theater. Dylan is a recent graduate of North Central College, where he studied Musical Theatre. Previous shows include *Wonder of the World* (NCC), *Macbeth* and *Nell Gwynn* (Chicago Shakespeare Theater), *Love Actually? The Unauth. Musical Parody* and *Bachelor: An Unauth. Musical Parody* (Apollo Theater). He thanks his fellow cast mates, production team, and family for all their love, support, and diligent work.

## PRODUCTION TEAM

**Simon Stephens (Playwright)** Simon Stephens' plays include *Fortune*, *Light Falls*, *Maria*, *Fatherland*, *Rage*, *Heisenberg*, *Nuclear War*, *Song from Far Away*; *Birdland*, *Carmen Disruption*, *Blindsided*, *Morning*, *Three Kingdoms*, *Wastwater*, *Punk Rock*, *The Trial of Ubu*, *Marine Parade*, *Sea Wall*, *Harper Regan*, *Pornography*, *Motortown*, *On the Shore of the Wide World*, *One Minute*, *Country Music*, *Christmas*, *Port*, *Heron*s and *Bluebird*. He has adapted Jose Saramago's *Blindness* for the stage and also Mark Haddon's *The Curious Incident of the Dog in the Nighttime*. He has written English language versions of Jon Fosse's *I Am the Wind*; Odon Von Horvath's *Kasimir and Karoline* (titled *The Funfair*); Henrik Ibsen's *A Doll's House*; Anton Chekhov's *The Cherry Orchard* and *The Seagull* and Bertolt Brecht and Kurt Weill's *Threepenny Opera*. He has presented four series of the Royal Court Playwright's Podcast. His book "A Working Diary" is published by Methuen. Stephens has been an Associate at the Royal Court, London and Steep, Chicago and a board member of Paines Plough. He has been an Associate Artist at the Lyric, Hammersmith, a Professor of Scriptwriting at Manchester Metropolitan University and an Associate Professor at the Danish National School of the Performing Arts, Copenhagen.



## ARTISTS, continued

**Robin Witt (Director)** *Light Falls* is the sixth Simon Stephens play that Robin Witt has directed for Steep. Witt is also an ensemble member at Griffin Theatre Company and she has worked for a variety of Chicago theatres including Steppenwolf, Writers Theatre, Northlight, Goodman, A Red Orchid, and Artistic Home. She is a Professor of Directing at UNC Charlotte.

**Lauren Lassus (Stage Manager)** Lauren is a proud Steep Ensemble Member. She is thrilled to be working with Robin again for whom she's stage managed *Pomona*, *Linda*, *Lela & Co.*, *Brilliant Adventures*, *Motortown*, and *Love and Money*. She is so excited to be back doing live theatre after the last couple of years! Thanks to Robin, the cast, and crew!

**Sotirios Livaditis (Scenic Designer)** Sotirios is a scenic designer, illustrator and storyteller based in Chicago. He's thrilled to return to Steep where he previously designed the set for *Mosquitoes*. Recent projects include *Bright Star* (Hope College), *Wellesley Girl* (Compass Theatre), *This Wide Night* (Shattered Globe Theatre), *RAGTIME* (Music Theatre Works) *Teenage Dick* (Theatre Wit), *Out of Love* (Interrobang Theatre Project), *Hans Christian Andersen* (Northwestern University), and *For Services Rendered* (Griffin Theatre – Jeff nomination). He has worked with Goodman Theatre, Berkeley Repertory Theatre, Alliance Theatre, Chicago Shakespeare Theatre, Milwaukee Repertory Theatre, Steppenwolf Theatre and The Irish National Opera. He holds an MFA in Stage Design from Northwestern University. Please feel free to experience his work at [sotiriosdesigns.com](http://sotiriosdesigns.com).

**Brandon Wardell (Lighting Designer)** Brandon is a lighting and scenic designer based in Chicago and an proud Ensemble Member of Steep. Recent designs include *Mosquitoes*, *Pomona*, *Linda*, *Birdland*, *Lela & Co.*, *Earthquakes in London*, and *Brilliant Adventures* at Steep; *Two Trains Running* at Court; *The Curious Incident of the Dog in the Night-Time* at Steppenwolf; *A Number* at Writers; *Midsummer* at the Greenhouse; *The Father* with Remy Bumppo; *Rutherford* and

*Son*, *Cardboard Piano*, and *In The Next Room* with TimeLine; *For Services Rendered*, *Titanic*, *London Wall*, and *Men Should Weep* with Griffin; and *The Game of Love and Chance* at American Players. Brandon earned his MFA from Northwestern University and is Professor of Lighting Design at Northern Illinois Univ.

**Alison Siple (Costume Designer)** Alison returns to Steep where previous projects with the company include *Earthquakes in London*, *A Small Fire*, *Motortown*, *Fallow*, *Moment* and *The Resistible Rise of Arturo Ui*. Other recent work includes *The Mousetrap* (Court Theatre), *I Wanna Fucking Tear You Apart* (Rivendell Theatre Company), *On Clover Road* (American Blues) and *Fantastic Mr Fox* (Emerald City). Alison is an artistic associate at Steep and a graduate of Northwestern University. Website: [alisonsiple.com](http://alisonsiple.com)

**Daniel Etti-Williams (Sound Designer)** Daniel is an up-and-coming sound designer and engineer local to Chicago. After studying acting at Oklahoma City University, he moved to Chicago to participate in Steppenwolf Theatre Company's Apprenticeship Program. Since then, he has had the opportunity to work all over Chicago making theatre and telling stories and expressing his passion through design. Chicago design credits include *Run The Beast Down* (Strawdog Theatre Company), *Hershel and the Hanukkah Goblins* (Strawdog Theatre Company), *Beatrix Potter's Holiday Tea Party* (Chicago Childrens Theatre), *Haus of Atreus* (Mudlark Theater), *Peerless* (Northwestern University Graduate Directing Program), *On The Greenbelt* (Strawdog Theatre Company), *At The Vanishing Point* (The Gift Theatre), and *Paris* (Steep Theatre).

**Thomas Dixon (Composer & Music Director)** Thomas is a composer and sound designer. An ensemble member at Steep, Thomas' previous work includes *The Leopard Play*, *Pomona*, *Linda*, *Birdland*, *Lela & Co.*, *Wastwater*, *Brilliant Adventures*, and more. Other credits include productions at Steppenwolf, Victory Gardens, About Face, Jackalope, Kansas City Rep, Cleveland Play House, Portland Center Stage, and Oregon Shakespeare Festival. Thomas teaches design

## ARTISTS, continued

at Columbia College Chicago and DePaul University and is a member of the Theatrical Sound Designers and Composers Association.

### **Micah Figueroa (Intimacy Choreographer)**

Micah is a queer, latinx, Chicago-based actor, director, choreographer, and teaching artist specializing in intimacy/violence design, physical theatre, and circus arts. He is simply thrilled to be returning to Steep Theatre after directing the intimacy and violence in *The Leopard Play*, for which he was a 2020 Jeff Award Nominee. As an intimacy designer his other recent and upcoming projects are with First Floor Theatre (*Mike Pence Sex Dream, Plano*, upcoming: *Bottecelli in the Fire*), and Northwestern University (*In His Hands, Something Rotten, Men on Boats, Peerless*).

**Adam Goldstein (Dialect Coach)** Adam Goldstein (Dialects, he/him/his) Previously at Steep: *Pomona, Zurich, Linda, Wastwater, If There is..., Strangers, Babies, Motortown* (Steep); *Other: In Every Generation* (Victory Gardens); *Mlima's Tale, For Services Rendered, In to America, Titanic, Men Should Weep* (Griffin); *Parade* (Writers); *The Book of Will, Miss Bennett* (Northlight); *Book of Joseph* (Chicago Shakes); *Man in the Ring, Blues for an Alabama Sky, Long Day's Journey...(Court); Kiss, The Total Bent, The Distance* (Haven). *Hopelessly Devoted, Dead Man Walking, Melancholy Play, The Language Archive* (Piven) *The Temperamentals* (About Face); *The Room* (AROT) *Mister Punch, Season On The Line* (House); *Ironbound, OkayBye* (Steppenwolf); *After Miss Julie, Conversations...*(Strawdog); and others. Adam is Assistant Professor of Theatre at Northeastern Illinois University. MFA Northwestern, BFA- NYU. For EMH and CFG.

### **Catherine Allen (Production Manager)**

Catherine is an ensemble member at Steep Theatre and *Light Falls* is her 11th production with Steep. Past production management credits include work with Actors Gymnasium, Porchlight Music Theatre, Rivendell Theatre Ensemble, About Face Theatre, Sideshow Theatre, Griffin Theatre, Congo Square, and others. She is thrilled to be a part of Steep's return to the stage this summer!

**Lucy Carapetyan (Casting Director)** Lucy first worked with Steep as an actor in 2008, and has been an ensemble member since 2015. As Casting Director Lucy is committed to diversifying our stages, making our stories reflect our community, and collaborating with directors to create an empowering and joyful audition room. She is proud to be part of bringing Steep's on-stage ensembles together show after show. Lucy is a graduate of Northwestern University.

**Lisa Harriman (Assistant Director)** Lisa is delighted to be working with Steep Theatre on this beautiful production of *Light Falls*. Other recent work includes Stage Center Theatre's productions of Jaqueline Goldfinger's *Babel* (Assistant Director) and Jenni Lamb's *Waterway*, as well as work with Rivendell Theatre Ensemble and the direction of various short films. In her other life, Lisa is a yoga teacher at CorePower Yoga.

# DONORS

Steep Theatre is profoundly grateful to the following supporters for their generous contributions.  
This list reflects gifts received between June 1, 2021 and June 24, 2022.

## Season Sponsor

The Bayless Family  
Foundation

## Production Sponsors

Dr. Susan Burland &  
George Plumb  
Ken Burlington  
Kassie Davis &  
Bruce Beatus  
Karen Shankman &  
Jim Fruehling  
Lisa & Randy White  
Jan Willer &  
Mark Osing,  
Martha Anne &  
Stephen Yandle

## Steep Producers (\$5,000 and up)

The ADJLM Foundation  
The Bayless Family  
Foundation  
Dr. Susan Burland &  
George Plumb  
Ann & Rich Carr  
The City of Chicago  
Department of  
Cultural Affairs and  
Special Events  
Holly & David Collins  
The Gaylord & Dorothy  
Donnelley  
Foundation  
The Illinois Arts Council  
Agency  
Ted Lowitz  
The MacArthur Funds  
for Culture, Equity,  
and the Arts at the  
Richard H. Driehaus  
Foundation  
Alan & Debra  
Rosenberg

## Steep Benefactors (\$1,000 to \$4,999)

Anonymous  
Ken Burlington  
Frank G. and Gertrude  
Dunlap Fund  
Sallie Gaines &  
Mark Richardson  
Deborah Garber &  
John Tielsch  
Leigh & John  
Hourihane  
ICF

Peter James  
George Jones  
Carolyn & Gordon Kirk  
Rita & Jim Knox  
Sara & Adam Levy  
Barbara & Ed Mills  
Jen & Peter Moore  
Margaret & Peter  
Morris  
Dan & Terry Pramuk  
Robert & Barbara  
Richards  
Karen Shankman &  
Jim Fruehling  
Elisabeth Rose & Owen  
Shapiro  
James T. O'Neill  
Bill & Cathy Siple  
Barbara & Randy  
Thomas  
Anna Wermuth  
Lisa & Randy White  
Jan Willer &  
Mark Osing  
Martha Anne &  
Stephen Yandle

## Steep Patrons (\$500 to \$999)

Anonymous  
AbbVie  
Ann Marie Arden  
Michael Bauschelt  
John Bierbusse  
Stacy Bosma &  
James Allen  
Denise Burch &  
Eric Weinstein  
Lisa Disch  
Equifax  
Kelly Fitzgerald &  
Chad Newman  
Diane & Ian Galleher  
Elaine Glusac &  
Dave Bartusek  
Carol & Alan Greene  
Denise Hazaga &  
Lisa Vandermark  
John Hoffmann  
The Illinois Tool Works  
Foundation  
Molly Moore Johnson  
Kerry & Kenny Lassus  
Cynthia Marker  
Anne & Richard Moore  
Kate Moore

Margaret Piatt &  
Jim White  
Prairie Home Builders  
Karen & Frank  
Schneider  
Julia Spann &  
Paul Carapetyan  
Sylvia & Joseph Stone  
Jeannie Taylor &  
Mike Roberts  
Bryan Vanderhoof  
Pooja & Peter  
Vukosavich  
Tilly Wilhoite

## Steep Contributors (\$250 to \$499)

Anonymous  
Rita & Lloyd Allison  
Tiana Benway,  
in memory of  
Marie O'Connor  
Kay Berkson &  
Sidney Hollander  
Joan & Hank Bliss  
Laurie Breitkopf &  
Gregory Mancuso  
Meg & Matt Breslin  
Adam & Jillian Cullin  
Dell  
Dan & Katherine  
Diamond  
Scott & Julie  
Drummond  
Edith I. Farrar  
Matthew J. Fleming  
Judith R. Freeman  
Ireta Gasner  
Mary & Charlie Gofen  
Susan & Peter Gray  
Joe Hartness &  
Troy Baresel  
James & Lois Hobart  
Robin Kacyn &  
Matt Chapman  
The Kenney Family  
Cynthia Kirk  
Ricki & Josh Lowitz  
Meridyth & Gordon  
McIntosh  
Fran Moeckler,  
in memory of  
Chuck Licht  
Angela & Charles Platt  
Jerry Proffit  
Dr. Edward O. Riley

Eugene Rinaldi  
Karen & Charlie Rose  
Mary Rybowski &  
Tom Ferrini  
The Saints  
Hunter Sanders  
Susan & Gary Segal  
Susie Stephenson  
Holly, Tony, & Nathaniel  
Storck  
Mark Woodward

## Steep Circle (up to \$249)

Anonymous  
John Adams  
Michele Allen  
Rex Babiera &  
Geoff Meyer  
Larry Baldacci &  
Ray Cunha  
Timothy Bannon  
James & David  
Baran-Robertson  
Rollie Batten  
L.c. Bernadine  
Linda Bierig  
Cathy and Trip Blair,  
in honor of Kelly  
Anne Fitzgerald  
Leroy Blommaert  
Ann Boland  
Carol Borden &  
Joel Shapiro  
Lillian Braden  
Lori Bravi  
Bruce Broerman  
The Browells  
Eugenia & Arch Bryant  
Janet Burroway  
Karen A Callaway  
Carol & Stephen Cann  
Chris Chmelik  
Johnny Clark  
Mark Coulombe  
Michelle Courvais  
Stephany Creamer  
James K. Cunningham  
Kim & John Dale  
Alyssa Dickman  
Vincent DiFruscio &  
Neil Averick  
Kenneth East &  
Timothy Thurlow  
Yazid Ebeid  
Pat Dean & Phil Eckert

## DONORS, continued

Suzanne Elkins Rose	Stasha Jain	Liz McGarry	Jill & Paul
Lin Ewing	Tamara & Neil Jain	Chris McGeehan	Schoenwetter
Virginia Fitzgerald	Eric Judson	Donald Mckay	Carson Schroeder
Verna & Stephen	Angela Just	Pamela Monaco	Jim Schulman
Foster	Edye Kamensky	Joseph Moore	Hugh Schulze
Janet Franz	Sandy Karuschak	Martha Moore Battles	Sharon Seeder
Douglas Frew	Charles L.	Lenore Murphy	Bonnie Shadrake
Debra Galassini	Katzenmeyer	Susan & Patrick Nash	Paul Shadrake
Stephanie Garrison	Dean Kaufer	Frank Newell	Laurie Shaman &
Gregg Gilman	Paul Kaufman	Peter Norman	Ed Hinkley
Carolyn & Dan	Charlotte & David	Gay Byrne Olk	Norm Sloan
Goffman	Kempner	Kate Piatt-Eckert &	Gail & Bob Spiel
Valerie Gorman	Stu Kiesow	Tony St. Clair	Linda Stern
Cindy & Mark	Meg Kennedy Shaw &	Linda Randall	Adrienne & Tim
Greenwood	John Cederquist	James Reeves &	Stewart
Susan & Anthony	Thad King	Brian Dudey	Beth Swaggerty
Grosch	John Knight	Marilyn Reid	Jim Swanson
Randal Hamburg	Joe Knotts	Bob Remer	Elizabeth A. Thulin
Marilyn Heckmyer	Jeremy Krifka	Cortney & Chris Renton	Dylan Toropov
Heidi Henning	Peter Kuntz &	Deirdre Rice	Valery True
Donna Higgins	Lori Kleinerman	John Henry Roberts	William Udovich
Phyllis Hill	Sandy & John Lemming	Mary Sue & Clark	Linda & Craig Walker
Diane Hires &	Joyce & Jules Lerner	Robson	Joan & Howard Warady
Bill Crowther	Daniel Lunney &	Judy & Bernie	Brian Wesselman
Holly & Tom Hirst	Marco Espinoza	Rosenstein	Barbara Whitney
Leslie Hoadley	Mary Mackay &	Linda Rudnick	Danniel Wilke
Mary Alice Hope	Edward Wheatley	Dr. Elaine A Sachnoff	Amy & Jonathan
Paula Horowitz	Nancy Malitz	Arnel Sancianco	Wishnick
Mary Hughes	Bob Mason	K. M. Sandrick	Norman Woodel
Judith & Tony Iacuzzi	Dr. Norman E.	Judi Schindler	Cathy Yen
Mia Jacob	Masters, Jr.	Mary Jo Schmitz	Alana Zalas
Donna Jaggard	Kristine May		

## SPECIAL THANKS

Charlotte Berry	Diane & Ian Galleher	Gabe Morrison	Beth Rohlmeier
Manasi Bhattacharyya	Jerry Goodman	Bridget O'Keefe	Meaghan Schneider
The Bramble	Jane Hollinger	Alderman Harry	Adrienne Smith
Mary Brennan	Molly Johnson	Osterman	Alderman Mary Ann
Ally Brisbin	Matt Lunt	Dustin Paige	Smith
Monica Chadha	Kosmo Music	Euna Park	The School at
Deb Clapp	Zubin Kammula	Amanda Passmore	Steppenwolf
Dave Cocagne	Kurt Kolar	John Paulun	Patrick Shanahan
Columbia College	Eileen LaCario	David Raino-Ogden	Janet Stengle
Chicago	Allison Lipsman	Kathleen Rafferty	Jess Vance
Don Cortelyou	Dan Luna	David Reed	Smitha Vasan
Liz DeBoni	Leo Mendoza	James Reeves &	Jack Wallace
Lee Dickson	Liz McGarry	Brian Dudey	
Edgewater Chamber of	Elisa Miller	Rivendell Theatre	
Commerce	Lee Miller	Ensemble	
Kelly Fitzgerald	Betsy Moore	Jeff Riemer	



Through the *Lights Up Edgewater* campaign, Steep is creating a new home for art, artists, and community. Learn more at [steeptheatre.com/lightsup](http://steeptheatre.com/lightsup).

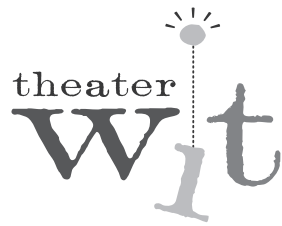
*Steep is profoundly grateful to the following supporters for their generous contributions. This list reflects gifts received as of June 24, 2022.*

Jonathan Abarbanel	Sallie Gaines &	Cooper Melgreen	Jessica & Christoph
The ADJLM Foundation	Mark Richardson	Anne Marie Dumas	Schrey
Seth Arkin	Stephanie Garrison	Mitchell &	Jim Schulman
Elaine Glusac &	Mary Godlewski &	John Bistolfo	Sharon Seeder
Dave Bartusek	Don Dearinger	Jen & Peter Moore	Hope & Jeff Sheffield
Dave & Megan Bock	Valerie Gorman	Colleen & John Mueller	Timothy Sherck
Carol Borden &	Dorothy Harza	James T. O'Neill	Julia Siple &
Joel Shapiro	Denise Hazaga &	Amanda & Doug	Kelly Carpenter
Deborah & Tom Bulgrin	Lisa Vandermark	Passmore	Lyn Spillman &
Ken Burlington	Phyllis Hill	Kaye & Bob Passmore	Russell Faeges
Ann & Rich Carr	Elaena Hoekstra	Dan & Terry Pramuk	Jenny & Patrick
Louis Chieng	Shirley & David	Jerry Proffit	Stapleton
Johnny Clark	Holdeman	Anne Puotinen	Craig Steadman
The Robert D. Collins	John Kadus	James Reeves &	Vanguard Charitable
Fund	Charlotte & David	Brian Dudey	Elaine Vozar &
Sonya Dekhtyar &	Kempner	Bob Remer	George Cederquist
Benny Zheng	Stu Kiesow	Melissa & Jeff Riemer	Lisa & Randy White
Lee Dickson	Carolyn & Gordon Kirk	James & David	Jan Willer &
Nic Dimond	Ted Lowitz	Baran-Robertson	Mark Osing
Lisa Disch	Jill Mannor	Peter & Clare	William Blair
Lisa Donovan &	David G. Marshall	Roccaforte	Mark Woodward
Brad Smith	Dr. Norman E.	Alan & Debra	Anne Wrider
Ruthann & Richard	Masters, Jr.	Rosenberg	
Edwards	Joan Mazzonelli	Karen & Frank	
Kelly Fitzgerald &	Ann McGill &	Schneider	
Chad Newman	Kate Welborn		

This program was printed by:



5640 N Broadway, Chicago, IL 60660  
[alliedprintandcopy.com](http://alliedprintandcopy.com)



## At Theater Wit

We are a theater company within a building, within a community, within a world.

As a production company, Theater Wit's mission is to be the premier "smart art" theater in Chicago by producing humorous, challenging, and intelligent plays that speak with a contemporary theatrical voice.

As an institution, Theater Wit seeks to be the hub of the Chicago neighborhood theater scene. In our three spaces, we bring together Chicago's best storefront theater companies. Here you will find a smorgasbord of excellent productions, see the work of a parade of talented artists, and mingle with audiences from all over Chicago.

## In the Middle of a Community

Everyone here: folks in the audience... the person who handed you this program... somewhere on or off the stage there are actors... if you look up in the corner you might get a glimpse of the stage manager in the booth... We're all in this room for the same reason: to be a part of this shared experience. No matter who they are or where they come from; no matter if they are complete strangers or familiar faces; no matter how different the age, the race, or the walk of life; after this performance, you will have something in common. So, strike up a conversation in the lobby, introduce yourself to someone new. Meet our staff, shake hands with an actor, get a drink from our bar. We're all in this together.

## Part of the Chicago Scene

Theater is part of the Chicago experience. Each year, over 200 theaters present thousands of shows to Chicago's loyal and enthusiastic theater-going audience. Chicago's theater community is recognized around the world for its talent, its innovation and its power to entertain and enlighten. If Tony awards were sports championships, our artists would beat out the combined efforts of Michael Jordan, Bobby Hull, Jim McMahon, Jermaine Dye, and the entire Chicago Cubs roster going back 100 years. This stage is a Chicago stage, contributing to the vibrant artistic life of our city and the economic development of our neighborhood. Very few cities on the planet offer the theatrical richness and diversity of Chicago. But you get to share in it. Because you are here.



*ANY TIME  
ANY SHOW  
AS OFTEN AS YOU LIKE*

.....

# THEATER WIT MEMBERSHIP

\$35/month

.....

.....

## FLEXPASS

10 tickets for \$275

.....

- See anything in the building at a dramatically reduced price.
- See 10 shows, go on 5 dates, or just bring your 9 closest friends with you to one show.
- After ordering, you get a card in the mail within a week with your Flexpass code which can be used online, over the phone or at the box office

See any play in our building, any time, as often as you like for one flat monthly fee.

Reserve a ticket for any production in our facility. Do it in advance or just drop by on impulse.

Free ticket exchanges and replacement tickets.

Attend as many different shows as you want each month. Come once, twice or five times a week at no additional charge.

No initiation or startup fee, but members must agree to a three-month minimum.

Twice a year, bring a friend for free.

# THEATER WIT STAFF

## YOU ARE HERE WITH US

### BOARD OF DIRECTORS

*KATHRYN STIEBER*  
President

*CHARLES HORNEWER*  
Treasurer

*NEAL SMYTH*  
Secretary

*ROGER DANIEL*

*DAVID MAHVI*

*ROCHE SCHULFER*

*BRUCE WECHSLER*

### STAFF

*JEREMY WECHSLER* – Artistic  
Director

*DAVID WECHSLER* – Company  
Manager

*JOSH NORDMARK* – Box Office  
Manager

*ALEXA ULRICH* – Front of House  
Manager

*MATTHEW CHASE* – Facilities  
Manager

*HANNAH BLAU, REBECCA FLORES,  
CORRINE GLANVILLE, ELIZABETH  
HADDEN, ARIYA HAWKINS, JADE  
JONES, SARAH LUSE, JACKELYN  
NORMAND,* – Front of House Staff

### E-NEWS

Stay up to date on all the happenings at Theater Wit. Sign up for our e-newsletter. Get the latest info on show openings and schedules; eavesdrop on production gossip and artistic plans; see behind-the-scenes photos.

- Get a free piece of chocolate when you fill out a mailing list insert and give to any bartender, usher or house manager.
- Sign up online at [theaterwit.org/join](http://theaterwit.org/join)
- Mailings twice per month. We don't deluge you with messages and we don't sell your name to other lists.

Facebook: [facebook.com/theaterwit](http://facebook.com/theaterwit)

### DONATE

Theater Wit is a 501(c)(3) organization. Your tax-deductible donation supports Theater Wit and supports this building in its role as an artistic home for Chicago's best storefront theaters.

- Donate online at [theaterwit.org/donate](http://theaterwit.org/donate)
- Make an instant donation at the box office, the bar, or with our house manager.
- Donate your time and talents! Theater Wit welcomes volunteers for office work, community outreach, building improvements and special events.



# Theater Wit SUPPORTERS

## **LEADERSHIP CIRCLE (\$5000+)**

Bayless Family Foundation • Chicago BizArts  
City of Chicago Department of Cultural Affairs and Special Events  
Daniel Cyganowski and Judith Metzger • Roger Daniel  
Gaylord and Dorothy Donnelley Foundation • Illinois Arts Council Agency  
Chris Comerford and Virginia Kim • League of Chicago Theatres  
MacArthur Fund for Arts and Culture at Prince  
Paul M. Agnell Family Foundation • The Shubert Foundation  
Small Business Administration • Bruce and Sandra Wechsler  
Jeremy Wechsler and Anne S. Penniston

## **FOUNDERS' CIRCLE (\$1000-\$4999)**

Cliff Dwellers Foundation • Anonymous • Todd Goldberg • Leslie Grammer  
James and Brenda Grusecki • Chuck Hornewer and Ashley Nelson  
Jeffrey and Mona Morris • Roche Schulfer and Mary Beth Fisher  
Alden L. and Kristen Senior • Diana and Richard Senior • Kathryn Stieber

## **DIRECTORS' CIRCLE (\$1000-\$4999)**

Bernice Bigelow • Nancy S Bishop • Paul Danao and Deanna Conklin-Danao  
Ann Hartdegen • Jones Lang LaSalle • Michael Leppen • David Liechty  
Mimi Lutwak • Lizanne & Steve Phalen • Janet and Philip Rotner  
Frank and Karen Schneider • Eric Slauter • Neal & Bonnie Smyth  
Walter Stearns

## **PERFORMANCE CIRCLE (\$250-499)**

Susan R. Benner • Deanna Dunagan • Peter Gately  
Janice Gintzler • Lois and James Hobart • Cynthia Ho  
Carolyn Kirk • Jean A Klingenstein • Julie M Koerner  
Gaby Kuhn and Chuck Marien • Joanne & Craig Leslie • Dominic Leto  
Kyles of Theater Wit • Dawn Palmer • Jerry Proffit  
Susan and Richard M. Rieser, Jr Foundation, in honor of Bruce Wechsler  
Freshworks Dental Studio • Neal Smyth and Martha Christensen  
Anne Van Wart and Michael Keable • Anne Washburn

# Theater Wit

## SUPPORTERS

### ARTIST'S CIRCLE (\$100-\$249)

Paula Arnett • Steve Arsenijevic

Stephanie Bartels, in Memory of Melody Wechsler • Julie Berg-Einhorn

Sandra Boves • Timothy Comar • Jessica Covington • Alan and Hedy Daniel

Andrew & Melanie • Margaret Fasano • Kathleen Fischer • Andrew Fiske

Jeff and Heather Fleitz • Ethel C. Gofen • Heike Paula Hambley

Dorothy G Harza • Mary Winn Heider • Donald Hoffman

Ellen Hunt • Ruth Johnston • Lorraine Kulpa

Phil Lebovitz, in recognition of Mark Levey • Raymond & Jane Leuthold

Allison and Brad Levin • Karen Lewis • Mercedes Lombardi

Betsy Martens • Amy Matheny & Kiki Haralambides

Anthony Qaiyum and Rachel McClain • Bill & Donna McGough

Andreas Melinat • The Saints, Volunteers for the Performing Arts • Nick Mozak

Northwestern Heart Transplant Team • David and Nancy Napalo

Alison Nelson • Elaine Newquist • Janis W. and John Notz

Emily Rapport • Wilton Sanders • Christopher and Ann Marie Saternus

Jeffrey Schad • Judith and Jack Schindler • Donald & Victoria Scott

Scott Wagner and Christianne Selig • Timothy Sherck • Meg Simonton

Richard Candida Smith and Katherine P. Smith • Martin Till • Linda Walker

Melody Wechsler • Rinda West • James Wiltshire • Mark Zampardo

### WIT CLUB (\$1-\$99)

Amazon Smile • Amber V Cerpa • Elizabeth Auman

Nicole Bell • Broadridge • James L. Brott

Michael Burke • Janet Cahill • Allison Cain • Karen A. Callaway

Carol and Stephen Cann • JR Clark • Scott Cowan • Suzette Dewey

Carol Fujimoto • Grant Gilbert • Joe Gracia • Geraldine Ketterson

Kevin S. and Cynthia A. Koppelman • John Kovacevic • Laura Jones Macknin

Peter Mahsem • Margaret Massarello • Lenore Murphy • Shane Pederson

Kenneth and Maria Peterson • Nick Sandys • In Memory of Sofia Cyganowski

Lesley Reenan • Alicia M and Phil Senior-Saywell • Keith Sklar

Lauren Taslitz • James and Rebecca Thvedt • Benjamin Turbow

Tali & Liat Tzur • Ellen Wessel • Betti Wilson • Flavia Yamamoto-Nicolucci



steeptheatre.com

Steep Theatre Company is an ensemble of artists driven by a shared commitment to the organization's mission: to bring out the everyday truths in the stories we tell through ensemble work and to reach out to non-traditional theatregoers by seeking out stories and creating experiences relevant to them.

Steep believes theatre should stoke conversations about the issues and conditions that are part of all of our lives; conversations that take place between artists and audiences in the theatre, in the lobby, and long after everyone has gone home.

## PRODUCTIONS

- Paris* by Eboni Booth . . . . . Jun 2022  
*The Leopard Play\** by Isaac Gomez . . . Jan 2020  
*Mosquitoes* by Lucy Kirkwood . . . . . Oct 2019  
*Pomona* by Alistair McDowall . . . . . July 2019  
*First Love is the Revolution*  
 by Rita Kalnejais. . . . . April 2019  
*Red Rex\** by Ike Holter . . . . . Jan 2019  
*Zürich* by Amelia Roper. . . . . Oct 2018  
*Linda* by Penelope Skinner. . . . . July 2018  
*Birdland* by Simon Stephens . . . . . April 2018  
*Hinte\** by Calamity West . . . . . Jan 2018  
*The Invisible Hand* by Ayad Akhtar. . . Oct 2017  
*Lela & Co.* by Cordelia Lynn . . . . . July 2017  
*Hookman* by Lauren Yee. . . . . April 2017  
*Earthquakes in London*  
 by Mike Bartlett . . . . . Jan 2017  
*Bobbie Clearly\** by Alex Lubischer. . . Sept 2016  
*Wastwater* by Simon Stephens . . . . . July 2016  
*The Few* by Samuel D. Hunter . . . . . April 2016  
*Posh* by Laura Wade . . . . . Jan 2016  
*The Cheats\** by Hamish Linklater . . . Oct 2015  
*Brilliant Adventures*  
 by Alistair McDowall . . . . . July 2015  
*Martyr* by Marius von Mayenburg . . . April 2015  
*The Life and Sort of Death of Eric Argyle*  
 by Ross Dungan . . . . . Jan 2015  
*The Vandal* by Hamish Linklater. . . . . Oct 2014  
*A Small Fire* by Adam Bock. . . . . July 2014  
*If There Is I Haven't Found It Yet*  
 by Nick Payne . . . . . May 2014  
*strangers, babies* by Linda McLean. . . Jan 2014  
*Motortown* by Simon Stephens . . . . . Sept 2013  
*Fallow* by Kenneth Lin. . . . . July 2013  
*The Knowledge* by John Donnelly . . . April 2013  
*Luther* by Ethan Lipton . . . . . Jan 2013  
*Making Noise Quietly*  
 by Robert Holman . . . . . Oct 2012  
*Moment* by Dierdre Kinahan . . . . . July 2012  
*The Receptionist* by Adam Bock. . . . . April 2012  
*Love and Money* by Dennis Kelly . . . . Jan 2012  
*Under the Blue Sky*  
 by David Eldridge . . . . . Oct 2011  
*Pornography* by Simon Stephens. . . . . July 2011  
*Festen* by David Eldridge, Thomas Vinterberg,  
 Morgan Rukov, Bo Hr. Hansen . . . . . May 2011  
*Lakeboat* by David Mamet . . . . . Jan 2011  
*A Brief History of Helen of Troy*  
 by Mark Shultz . . . . . Sept 2010
- 2,000 Feet Away* by Anthony Weigh. . . May 2010  
*Harper Regan* by Simon Stephens. . . . Jan 2010  
*Kill the Old Torture Their Young*  
 by David Harrower . . . . . Oct 2009  
*The Hollow Lands* by Howard Korder . . . June 2009  
*Parlour Song* by Jez Butterworth . . . . . March 2009  
*In Arabia We'd All Be Kings*  
 by Stephen Adly Guirgis . . . . . Jan 2009  
*Seven Days\** by Egan Reich. . . . . Oct 2008  
*Greensboro: A Requiem*  
 by Emily Mann . . . . . May 2008  
*Breathing Corpses* by Laura Wade . . . Feb 2008  
*Coronado* by Dennis Lehane . . . . . Sept 2007  
*Insignificance* by Terry Johnson . . . . . July 2007  
*The Resistible Rise of Arturo Ui*  
 by Bertolt Brecht . . . . . May 2007  
*Otherwise Engaged* by Simon Gray . . . Feb 2007  
*The Last Days of Judas Iscariot*  
 by Stephen Adly Guirgis . . . . . Sept 2006  
*Bang the Drum Slowly* by Mark Harris,  
 adapted by Eric Simonson. . . . . June 2006  
*Of Mice and Men*  
 by John Steinbeck . . . . . March 2006  
*The Night Heron*  
 by Jez Butterworth . . . . . March 2006  
*Catch-22* by Joseph Heller . . . . . Oct 2005  
*Book of Days* by Lanford Wilson. . . . . June 2005  
*Incident at Vichy* by Arthur Miller. . . . . March 2005  
*Howie the Rookie* by Mark O'Rowe . . . Oct 2004  
*Dealer's Choice* by Patrick Marber . . . . . Aug 2004  
*The Time Trial* by Jack Gilhooley. . . . . May 2004  
*The Hothouse* by Harold Pinter . . . . . Aug 2003  
*Below the Belt* by Richard Dresser . . . . . Aug 2003  
*My Donkey Lady* by John Wilson . . . . . Aug 2003  
*The Job* by Shem Bitterman . . . . . May 2003  
*The Aspidistra Code*  
 by Mark O'Rowe . . . . . Oct 2002  
*Geography of a Horse Dreamer*  
 by Sam Shepard . . . . . June 2002  
*These Flowers are for My Mother\**  
 by Michael McGuire . . . . . March 2002  
*Pvt. Wars* by James McLure . . . . . Sept 2001  
*Search and Destroy*  
 by Howard Korder. . . . . Aug 2001  
*Life During Wartime*  
 by Keith Reddin . . . . . March 2001

\* World Premiere



# LIGHTS UP EDGEWATER

A New Home for Art, Artists,  
and Community

## A \$3 million campaign to

- ◆ Purchase and renovate Steep's new home at 1044 W Berwyn Ave
- ◆ Invest in artists through increasingly equitable compensation
- ◆ Build on our commitment to fiscal sustainability



Having a home venue has been a vital part of our story over the past twenty years. It has allowed us to create a uniquely warm, inviting atmosphere that supports honest, fearless work from artists and emboldens audiences to engage in challenging stories and conversations. It has grounded us in our community. As we move forward, we are inspired to create a cultural resource for neighbors, artists, and audiences alike.

Join us as we invest in this future together.

Learn more at [steeptheatre.com/lightsup](https://steeptheatre.com/lightsup)

